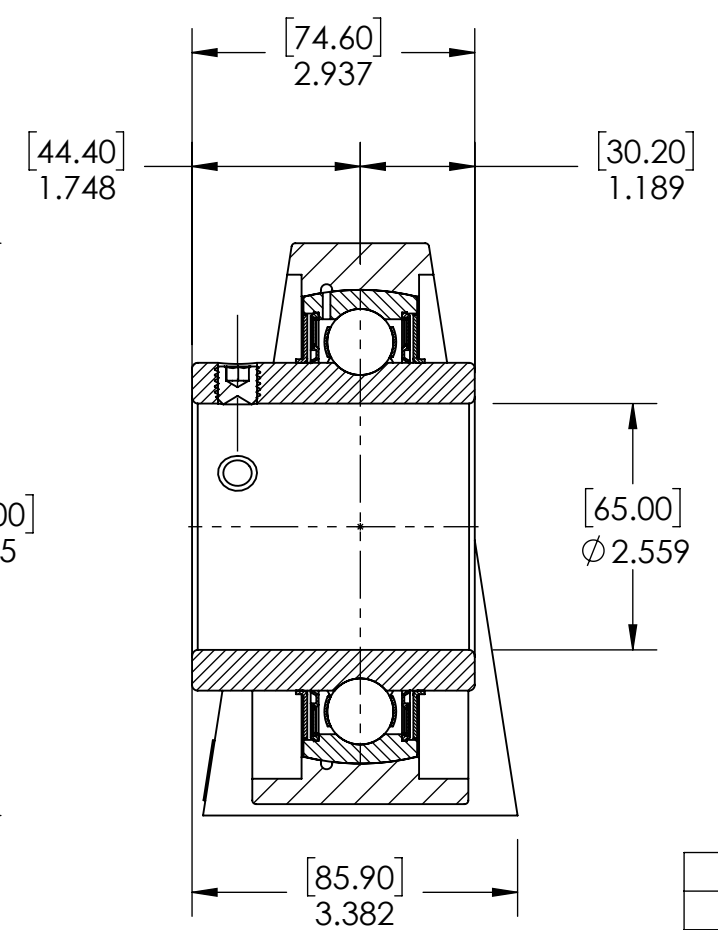
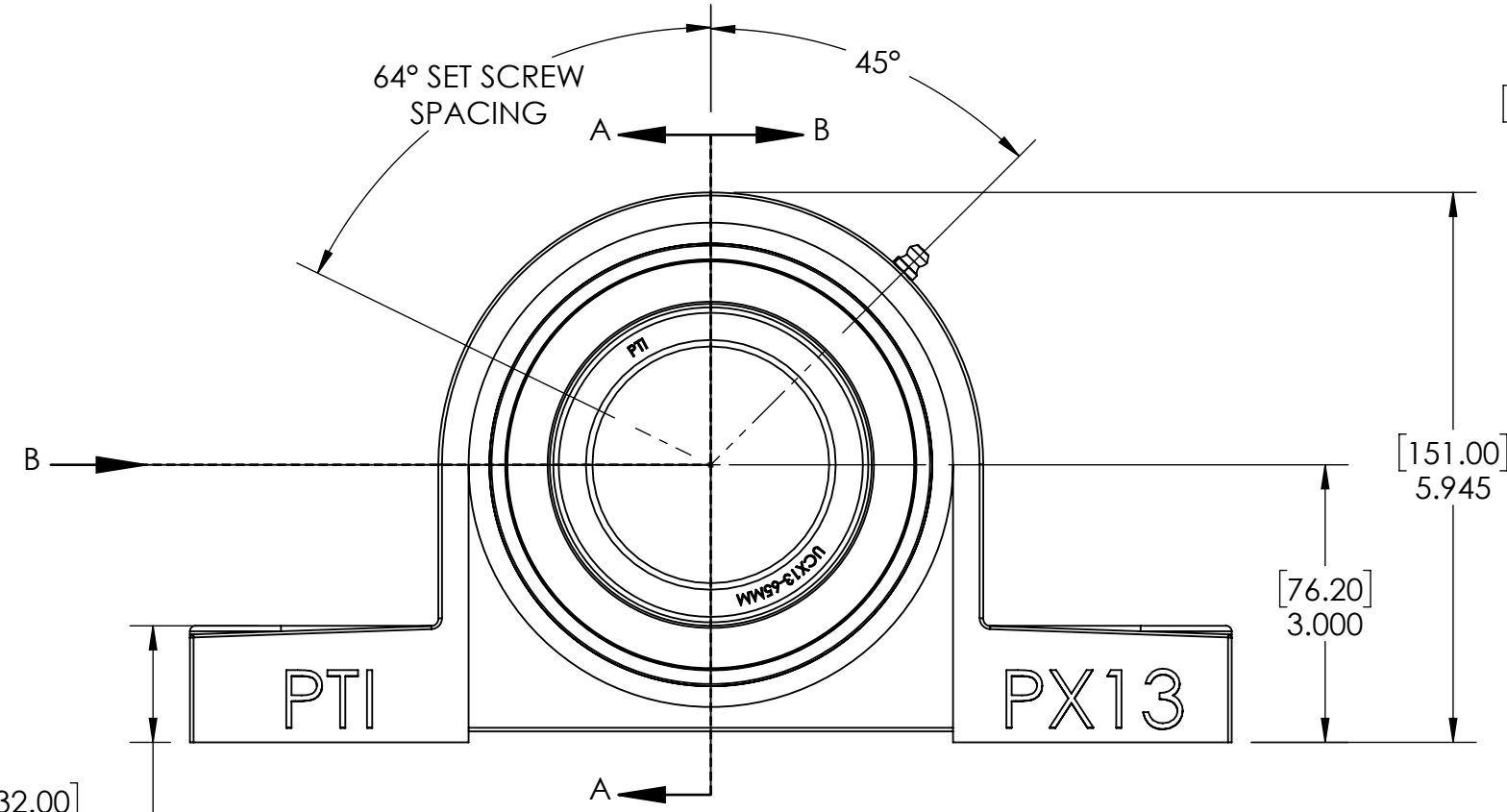
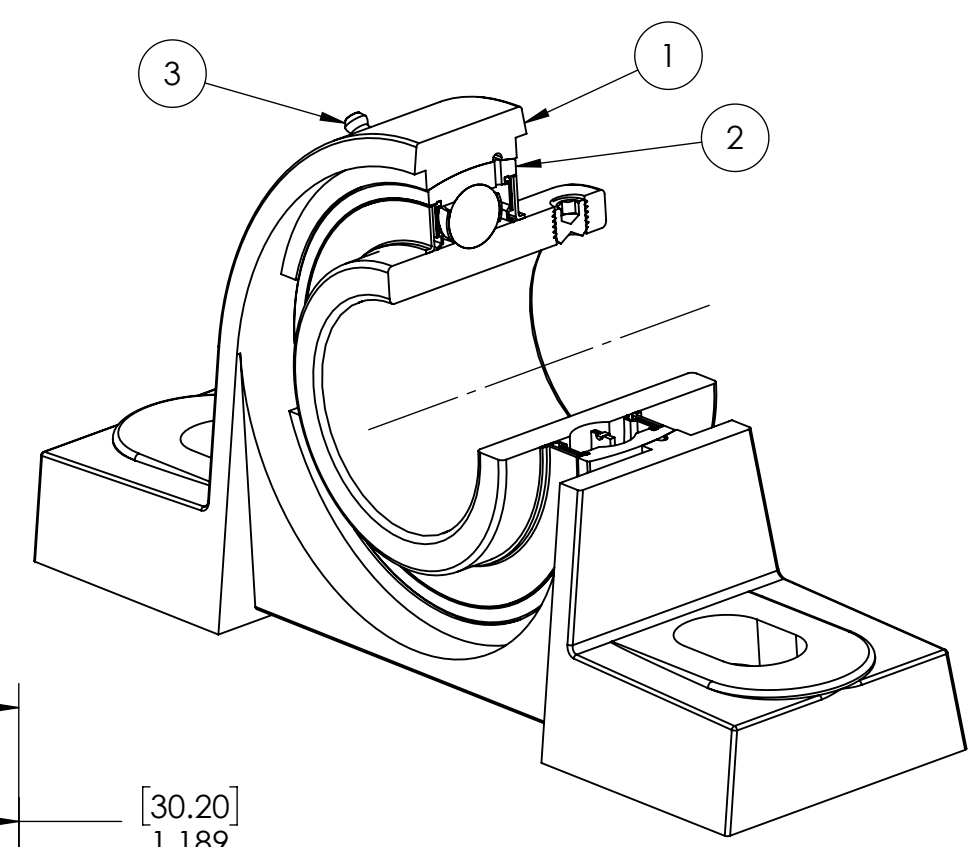
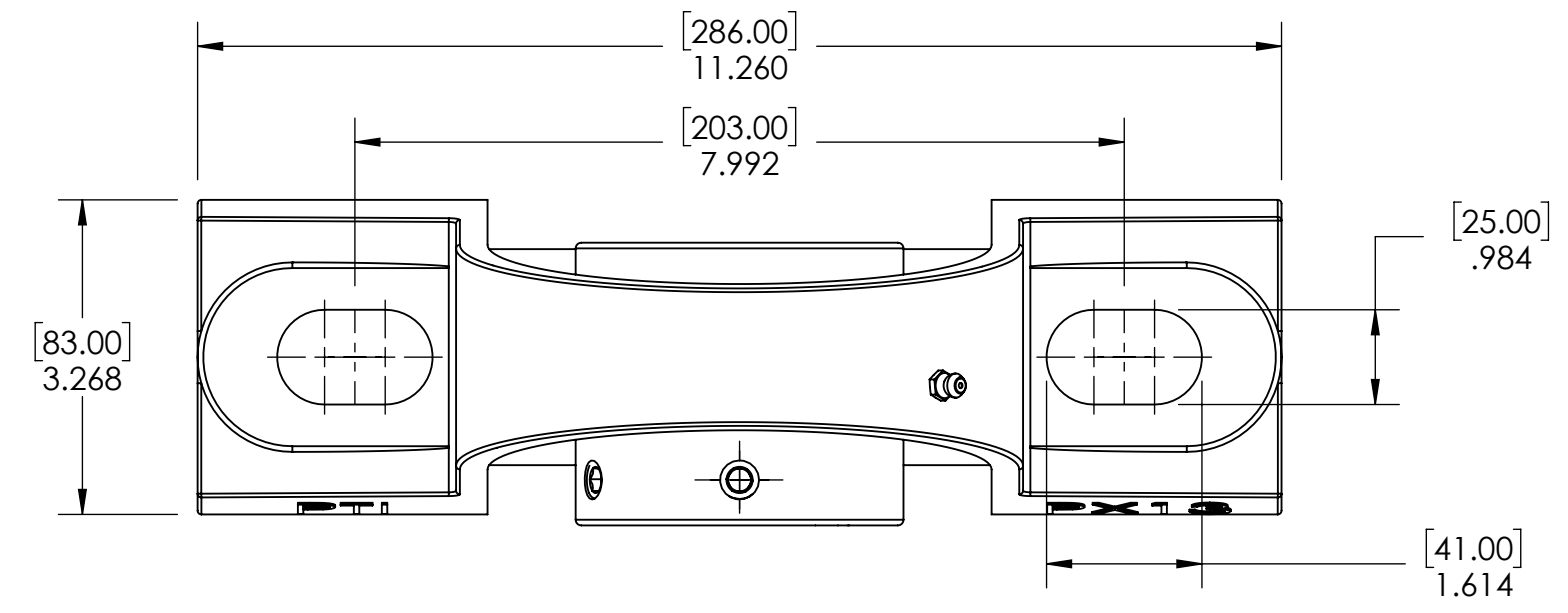


9 8 7 6 5 4 3 2 1

G G



| ITEM NO. | PART NUMBER | MATERIAL      | COATING     | QTY. |
|----------|-------------|---------------|-------------|------|
| 3        | M6 ZERK     | STEEL         | ZINC PLATED | 1    |
| 2        | UCX13-65MM  | BEARING STEEL | N/A         | 1    |
| 1        | PX13        | CAST IRON     | POWDER COAT | 1    |

| SPECIFICATIONS               |                                | WEIGHT                 |                 |
|------------------------------|--------------------------------|------------------------|-----------------|
| UNITS:                       | IN [mm]                        |                        | 14.15 LBS       |
| LOAD RATINGS                 | C: 14,000 LBS<br>Co: 9,900 LBS | MATERIAL               | SEE BOM         |
| SPEED RATING                 | 2450 RPM                       | COATING                | SEE BOM         |
| GREASE TYPE                  | NLGI #2                        | DRAWN                  | SEC 12/26/2024  |
| GREASE FILL                  | 40%                            | CHECKED                | KODS 01/06/2025 |
| OPERATING TEMP               | 10°F - 200°F                   | APPROVED               |                 |
| SEAL TYPE                    | B-TYPE                         | THIRD ANGLE PROJECTION |                 |
| INTERNAL CLEARANCE           | C3                             |                        |                 |
| TORQUE SETTING ON SET SCREWS |                                |                        |                 |



PROPRIETARY AND CONFIDENTIAL  
THE INFORMATION CONTAINED IN THIS DRAWING IS THE SOLE PROPERTY OF SOLVE IMG. ANY REPRODUCTION IN PART OR AS A WHOLE WITHOUT THE WRITTEN PERMISSION OF SOLVE IMG IS PROHIBITED.

| DATE | BY | REVISION DESCRIPTION          | REV       |
|------|----|-------------------------------|-----------|
|      |    | ITEM DESCRIPTION: UCPX13-65MM | SCALE 1:5 |
|      |    |                               | REV -     |

A A

9 8 7 6 5 4 3 2 1