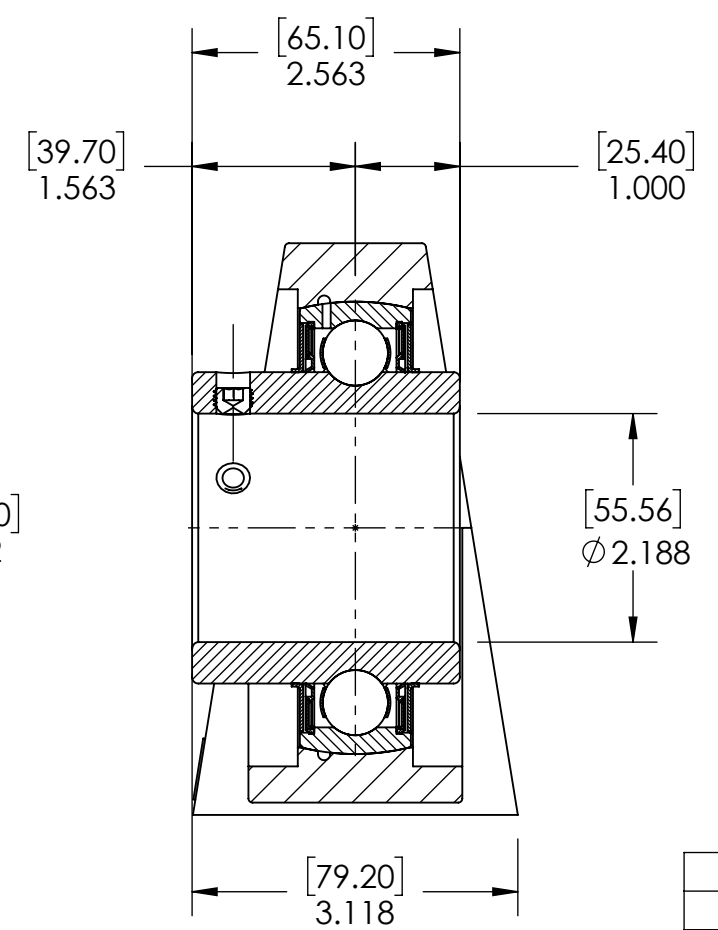
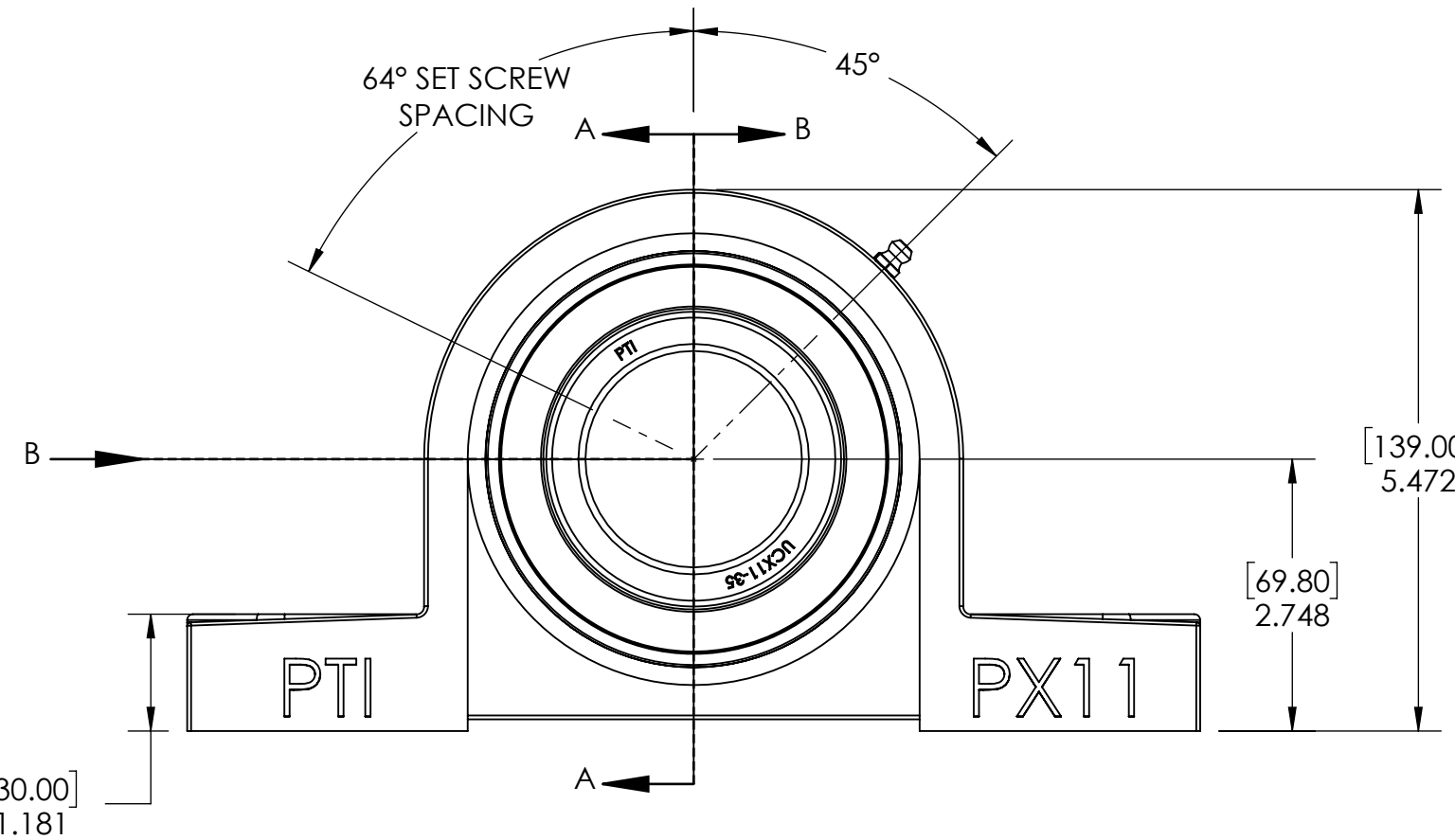
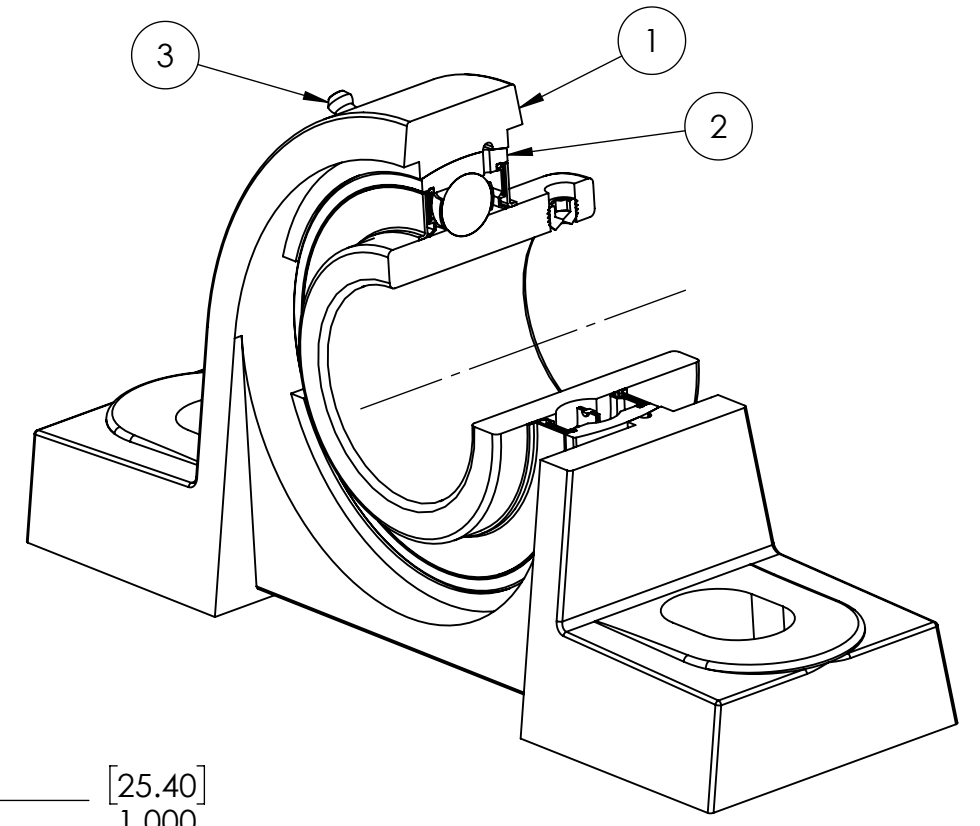
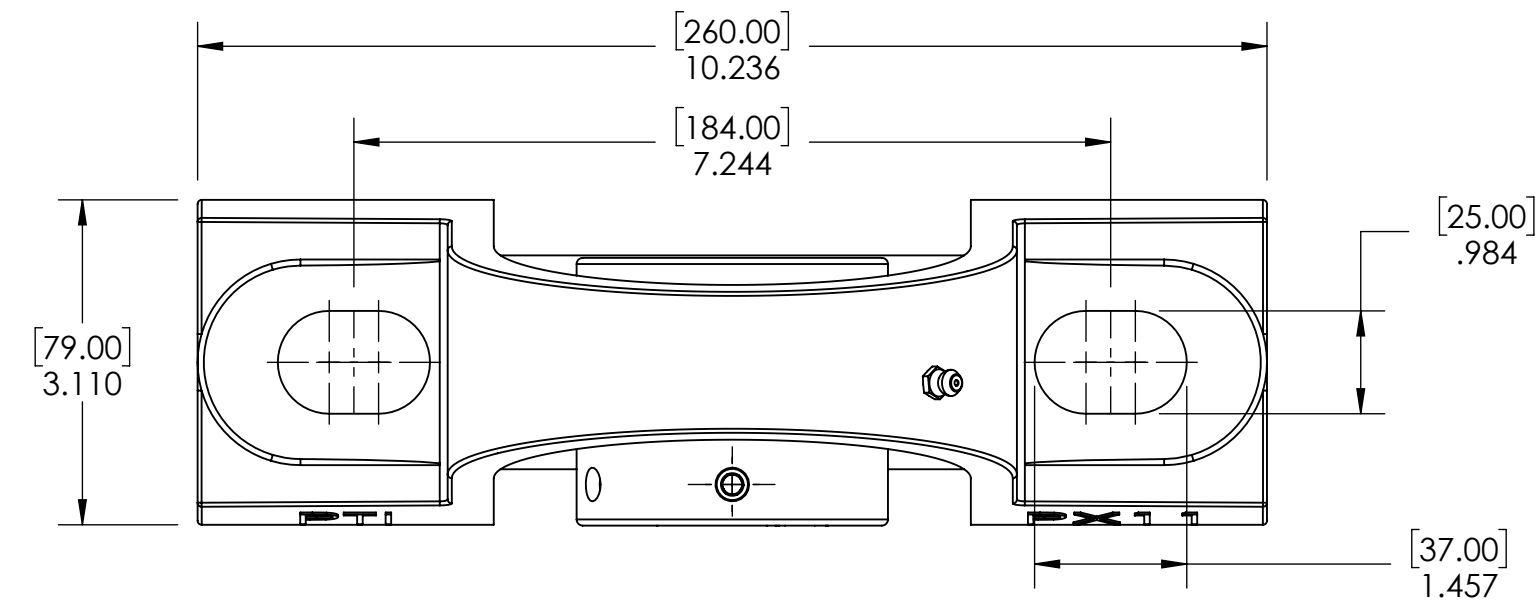


9 8 7 6 5 4 3 2 1

G F E D C B A



| ITEM NO. | PART NUMBER | MATERIAL | COATING | QTY. |
|----------|-------------|---------------|-------------|------|
| 3 | M6 ZERK | STEEL | ZINC PLATED | 1 |
| 2 | UCX11-35 | BEARING STEEL | N/A | 1 |
| 1 | PX11 | CAST IRON | POWDER COAT | 1 |

| SPECIFICATIONS | | WEIGHT | |
|------------------------------|--------------------------------|------------------------|-----------------|
| UNITS: | IN [mm] | | 11.66 LBS |
| LOAD RATINGS | C: 11,800 LBS Co: 8,150 LBS | MATERIAL | SEE BOM |
| SPEED RATING | 2800 RPM | COATING | SEE BOM |
| GREASE TYPE | NLGI #2 | DRAWN | SEC 12/26/2024 |
| GREASE FILL | 40% | CHECKED | KODS 01/06/2025 |
| OPERATING TEMP | 10°F - 200°F | APPROVED | |
| SEAL TYPE | B-TYPE | THIRD ANGLE PROJECTION | |
| INTERNAL CLEARANCE | C3 | | |
| TORQUE SETTING ON SET SCREWS | | | |

SOLVE INDUSTRIAL MOTION GROUP

SIZE **B**

PTI

DWG. NO.

PROPRIETARY AND CONFIDENTIAL
THE INFORMATION CONTAINED IN THIS DRAWING IS THE SOLE PROPERTY OF SOLVE IMG. ANY REPRODUCTION IN PART OR AS A WHOLE WITHOUT THE WRITTEN PERMISSION OF SOLVE IMG IS PROHIBITED.

| DATE | BY | REVISION DESCRIPTION | REV |
|------|----|-----------------------------|-----------|
| | | ITEM DESCRIPTION: UCPX11-35 | SCALE 1:6 |
| | | | REV - |

9 8 7 6 5 4 3 2 1

A B C D E F G