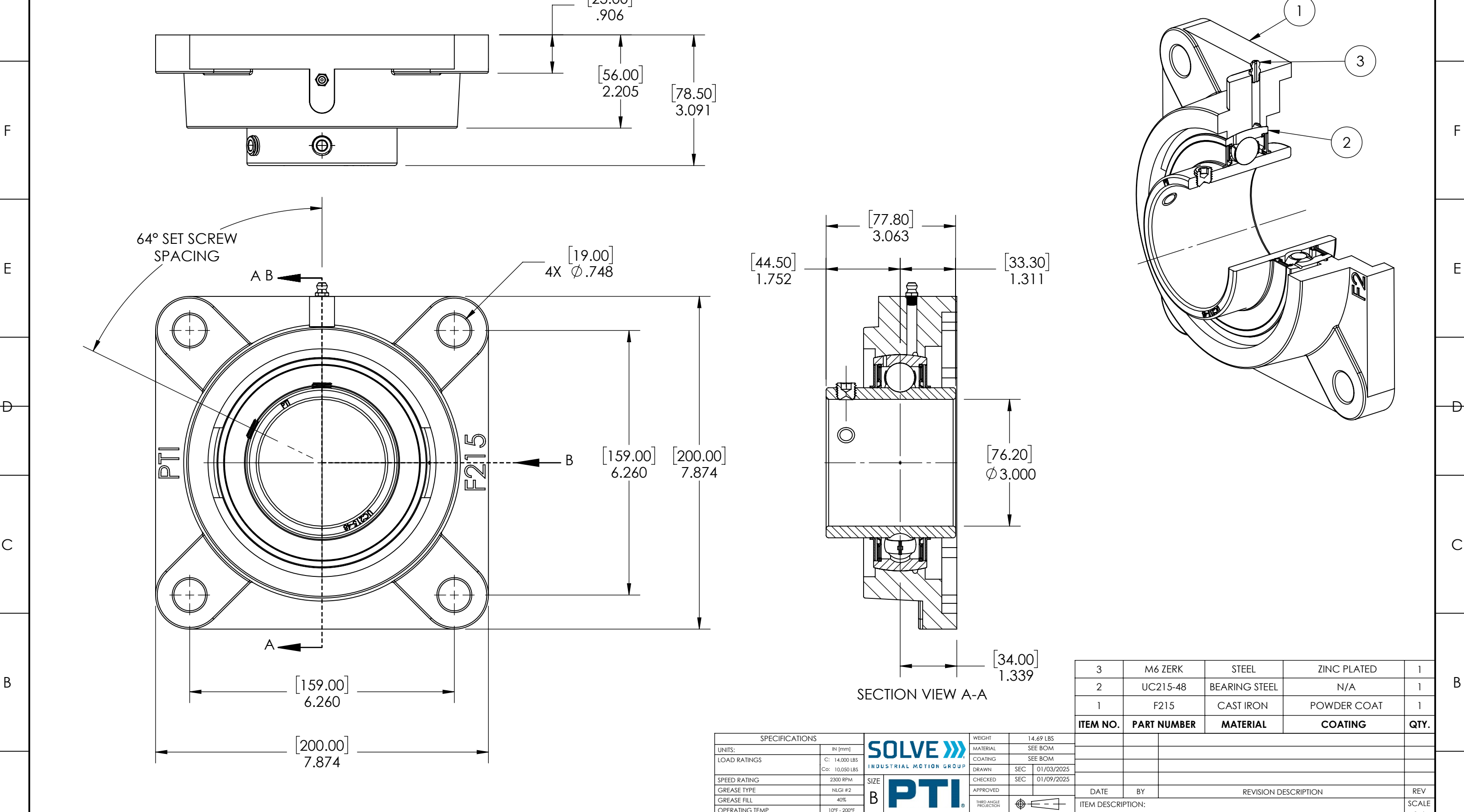


9 8 7 6 5 4 3 2 1

G F E D C B A



ITEM NO.	PART NUMBER	MATERIAL	COATING	QTY.
3	M6 ZERK	STEEL	ZINC PLATED	1
2	UC215-48	BEARING STEEL	N/A	1
1	F215	CAST IRON	POWDER COAT	1

SPECIFICATIONS		SOLVE INDUSTRIAL MOTION GROUP		WEIGHT	
UNITS:	IN (mm)	SIZE	B	14.69 LBS	
LOAD RATINGS	C: 14,000 LBS Co: 10,050 LBS	DWG. NO.		MATERIAL	SEE BOM
SPEED RATING	2300 RPM			COATING	SEE BOM
GREASE TYPE	NLGI #2			DRAWN	SEC 01/03/2025
GREASE FILL	40%			CHECKED	SEC 01/09/2025
OPERATING TEMP	10°F - 200°F			APPROVED	
SEAL TYPE	B-TYPE			DATE BY REVISION DESCRIPTION	
INTERNAL CLEARANCE	C3			ITEM DESCRIPTION: UCF215-48	
TORQUE SETTING ON SET SCREWS				REV	SCALE
				-	1:6

9 8 7 6 5 4 3 2 1

A B C D E F G