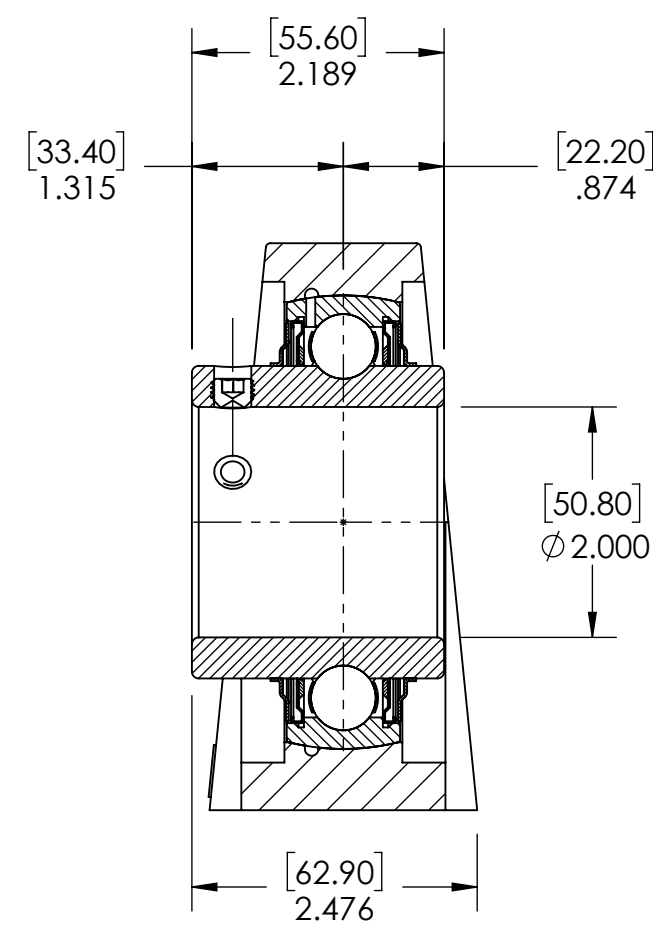
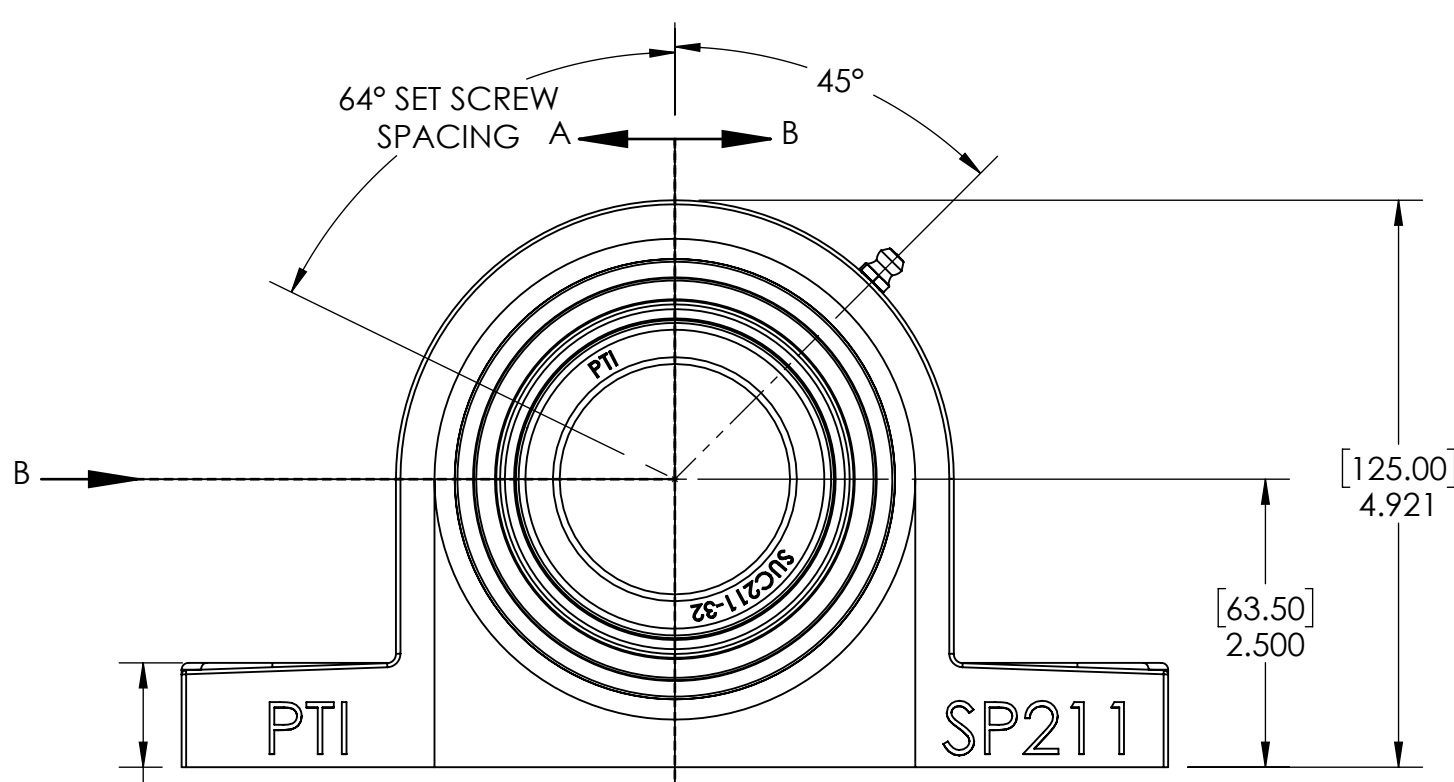
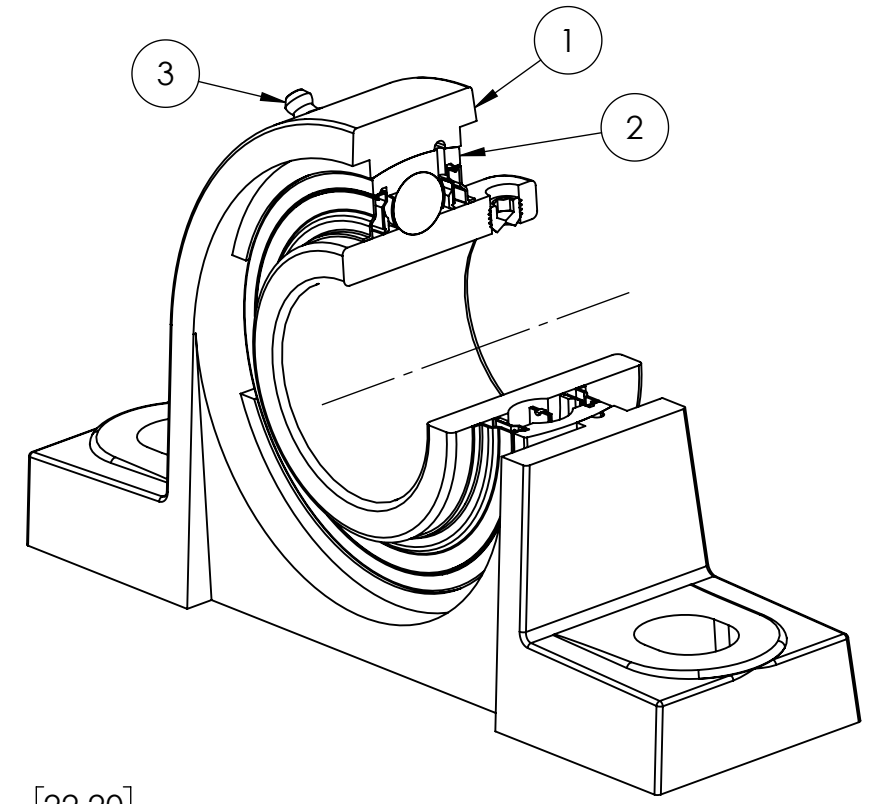
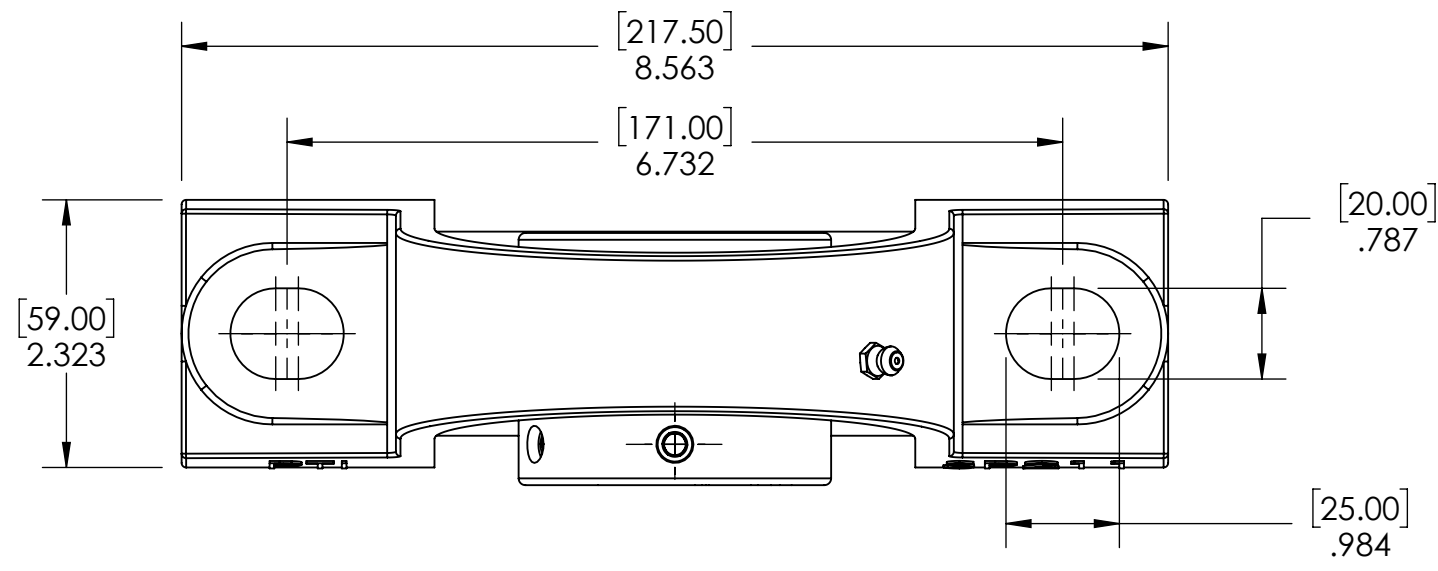


9 8 7 6 5 4 3 2 1

G F E D C B A



SECTION VIEW A-A

ITEM NO.	PART NUMBER	MATERIAL	COATING	QTY.
3	M6 ZERK	STAINLESS STEEL	N/A	1
2	SUC211-32	STAINLESS STEEL	N/A	1
1	SP211	STAINLESS STEEL	N/A	1

SPECIFICATIONS		SOLVE		WEIGHT	
UNITS:	IN (mm)	INDUSTRIAL MOTION GROUP		8.47 LBS	
LOAD RATINGS	C: 7,400 LBS Co: 5,600 LBS			SEE BOM	
SPEED RATING	3100 RPM	SIZE B PTI		COATING SEE BOM	
GREASE TYPE	FM222			DRAWN SEC 12/26/2024	
GREASE FILL	40%	DWG. NO.		CHECKED AK 01/09/2025	
OPERATING TEMP	-10°F - 250°F			APPROVED	
SEAL TYPE	K-TYPE	PROPRIETARY AND CONFIDENTIAL		DATE BY REVISION DESCRIPTION	
INTERNAL CLEARANCE	C3			ITEM DESCRIPTION: SUCSP211-32	
TORQUE SETTING ON SET SCREWS				REV 1:7	

9 8 7 6 5 4 3 2 1

A B C D E F G