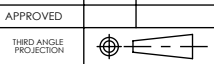


SECTION VIEW A-A

3	M6 ZERK	STAINLESS STEEL	N/A	1
2	SUC212-60MM	STAINLESS STEEL	N/A	1
1	SFL212	STAINLESS STEEL	N/A	1
ITEM NO.	PART NUMBER	MATERIAL	COATING	QTY.

SPECIFICATIONS		SOLVE INDUSTRIAL MOTION GROUP		WEIGHT	8.53 LBS
UNITS:	IN (mm)	SIZE	B	MATERIAL	SEE BOM
LOAD RATINGS	C: 9,000 LBS Co: 6,900 LBS	DWG. NO.		COATING	SEE BOM
SPEED RATING	2800 RPM	APPROVED		DRAWN	SEC 01/13/2025
GREASE TYPE	FM222	CHECKED	SEC 01/14/2025	DATE	BY
GREASE FILL	40%	DATE		REVISION DESCRIPTION	REV
OPERATING TEMP	-10°F - 250°F	DATE		ITEM DESCRIPTION:	SCALE
SEAL TYPE	K-TYPE	DATE		SUCSFL212-60MM	1:6
INTERNAL CLEARANCE	C3	DATE			REV
TORQUE SETTING ON SET SCREWS		DATE			-



PROPRIETARY AND CONFIDENTIAL  
THE INFORMATION CONTAINED IN THIS DRAWING IS THE SOLE PROPERTY OF SOLVE IMG. ANY REPRODUCTION IN PART OR AS A WHOLE WITHOUT THE WRITTEN PERMISSION OF SOLVE IMG IS PROHIBITED.