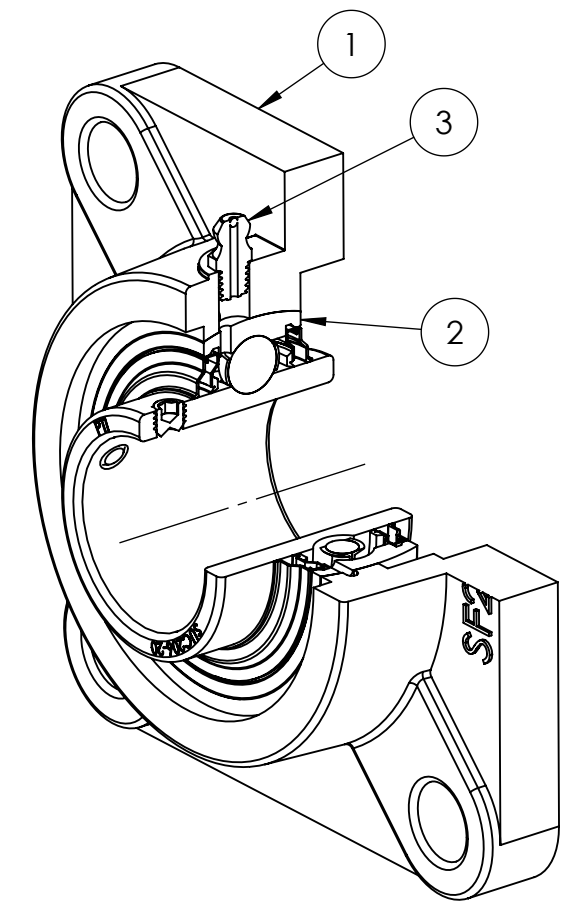
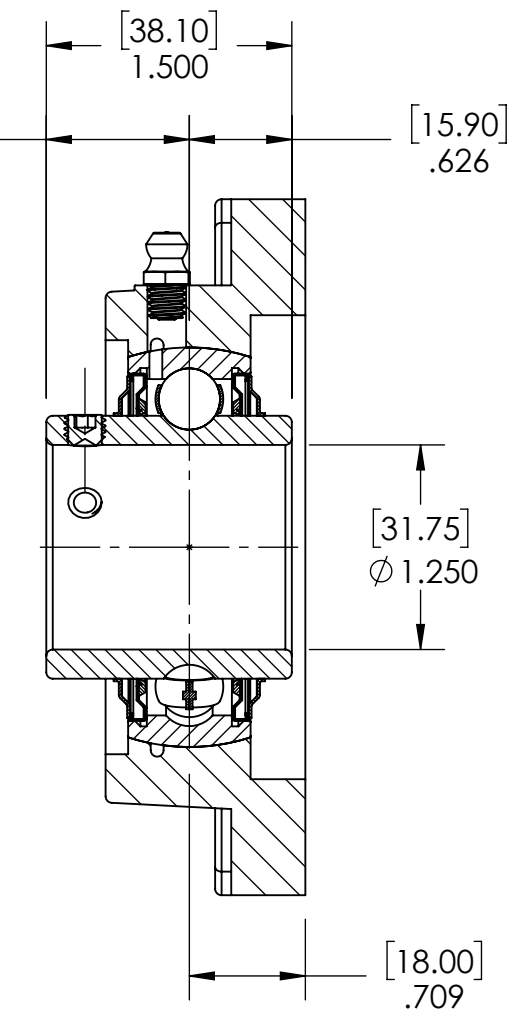
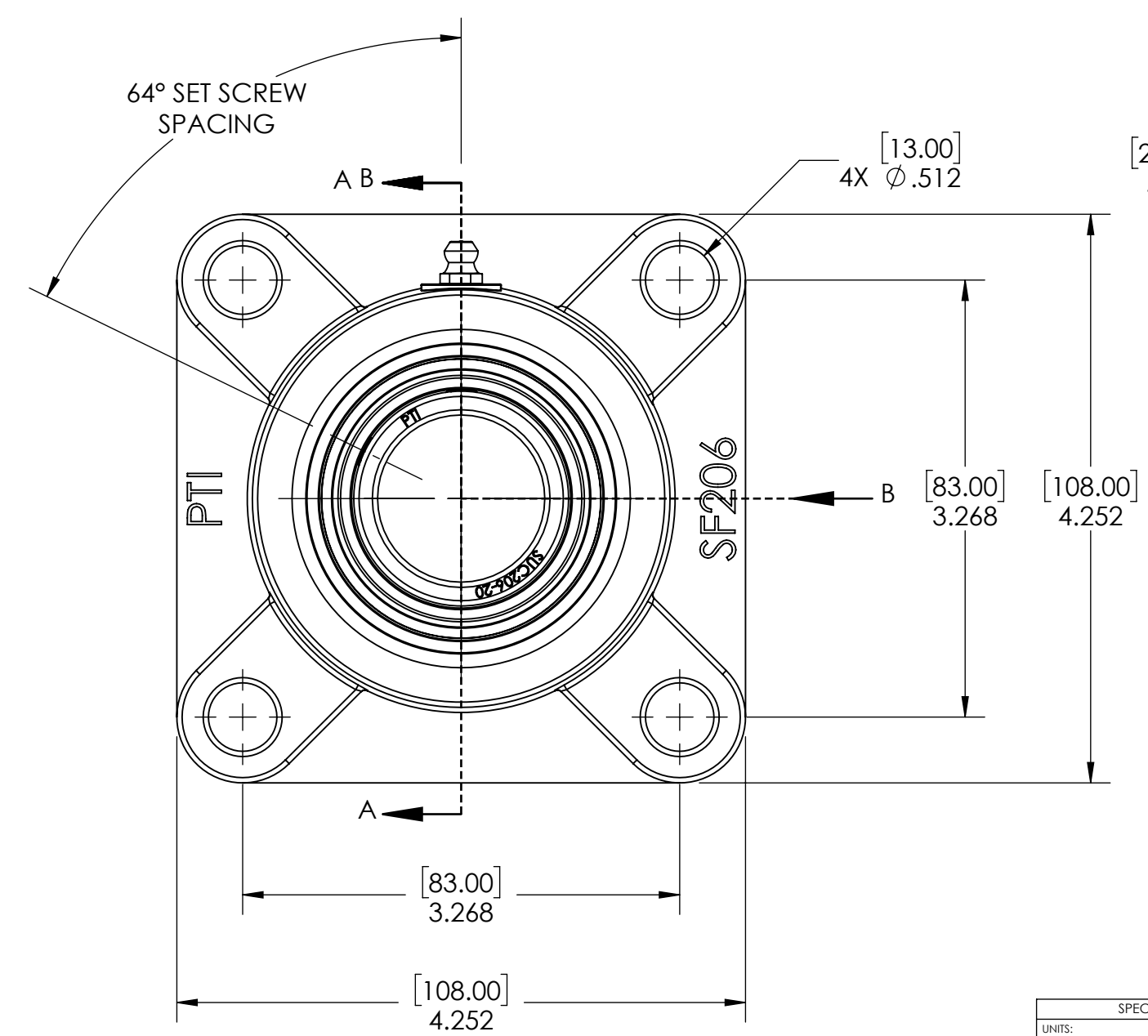
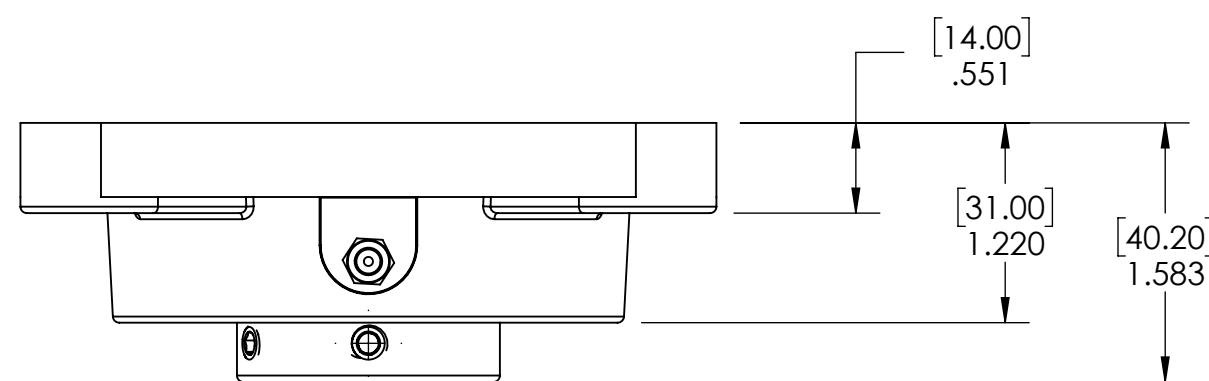


9 8 7 6 5 4 3 2 1

G F E D C B A



SECTION VIEW A-A

SPECIFICATIONS		SOLVE INDUSTRIAL MOTION GROUP		WEIGHT	2.80 LBS
UNITS:	IN (mm)	SIZE	B	MATERIAL	SEE BOM
LOAD RATINGS	C: 3,700 LBS Co: 2,030 LBS	APPROVED		COATING	SEE BOM
SPEED RATING	5300 RPM	CHECKED	AK	DRAWN	SEC 01/03/2025
GREASE TYPE	FM222	DATE		BY	
GREASE FILL	40%	REVISION DESCRIPTION		REV	
OPERATING TEMP	-10°F - 250°F	ITEM DESCRIPTION:	SUCSF206-20		SCALE
SEAL TYPE	K-TYPE				1:11
INTERNAL CLEARANCE	C3				REV
TORQUE SETTING ON SET SCREWS					-

ITEM NO.	PART NUMBER	MATERIAL	COATING	QTY.
3	M6 ZERK	STAINLESS STEEL	N/A	1
2	SUC206-20	STAINLESS STEEL	N/A	1
1	SF206	STAINLESS STEEL	N/A	1

9 8 7 6 5 4 3 2 1

A B C D E F G