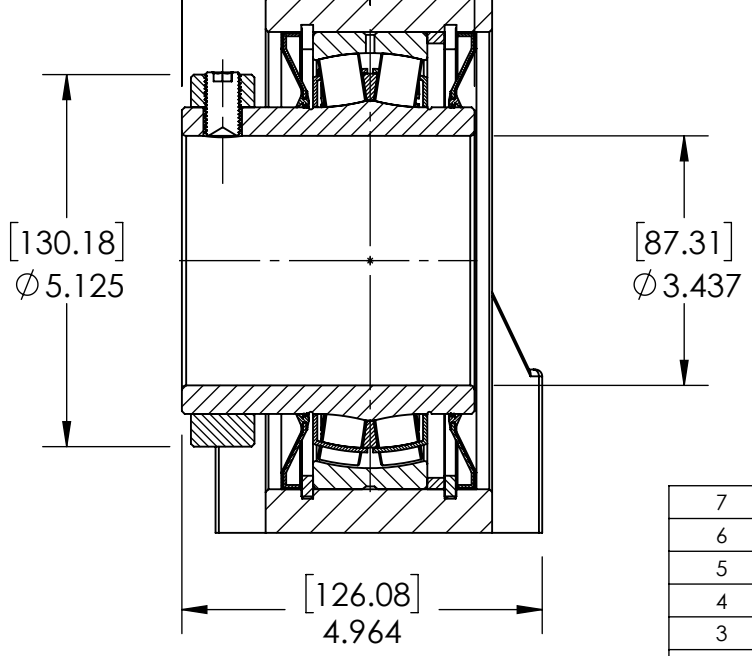
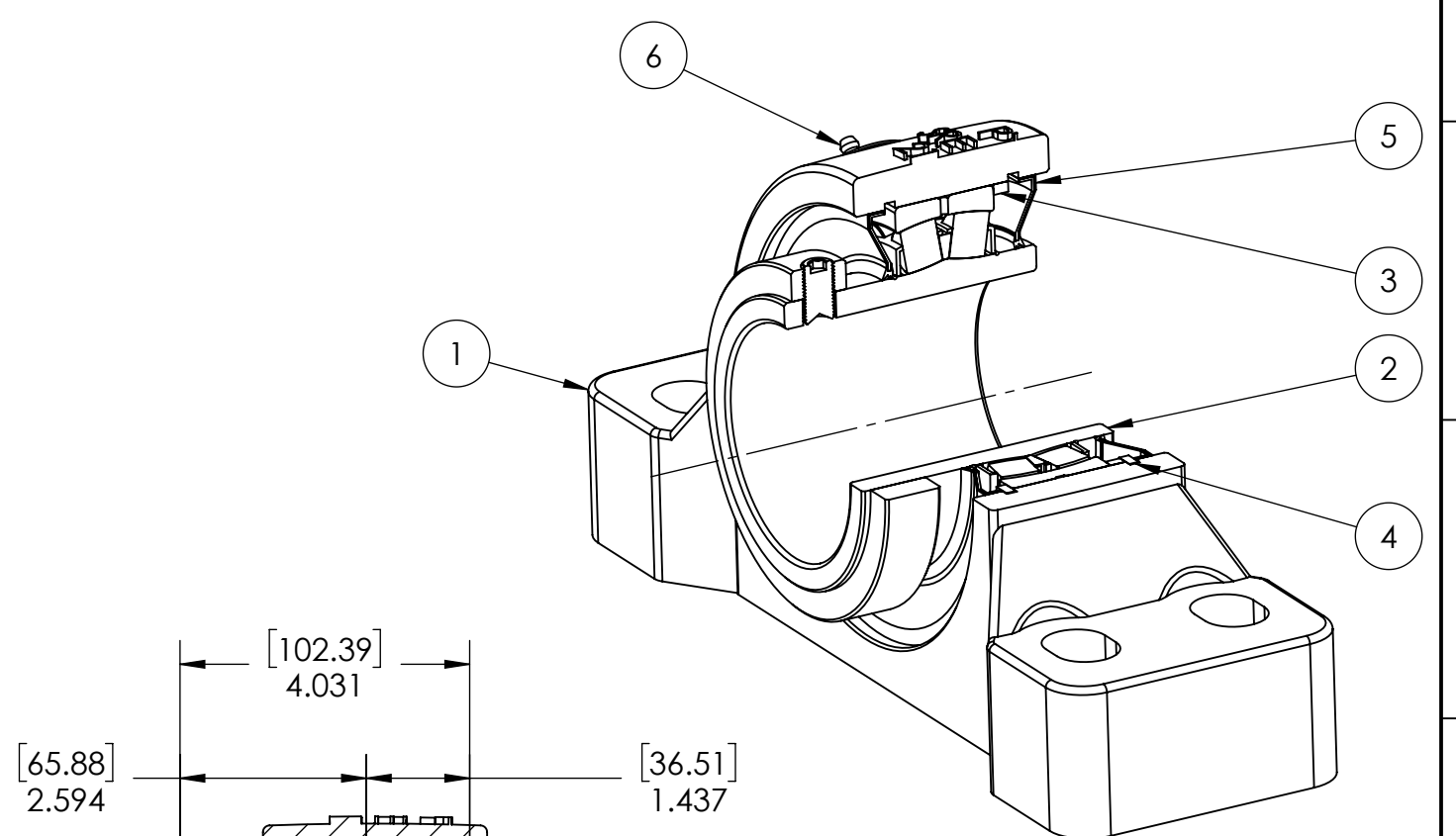
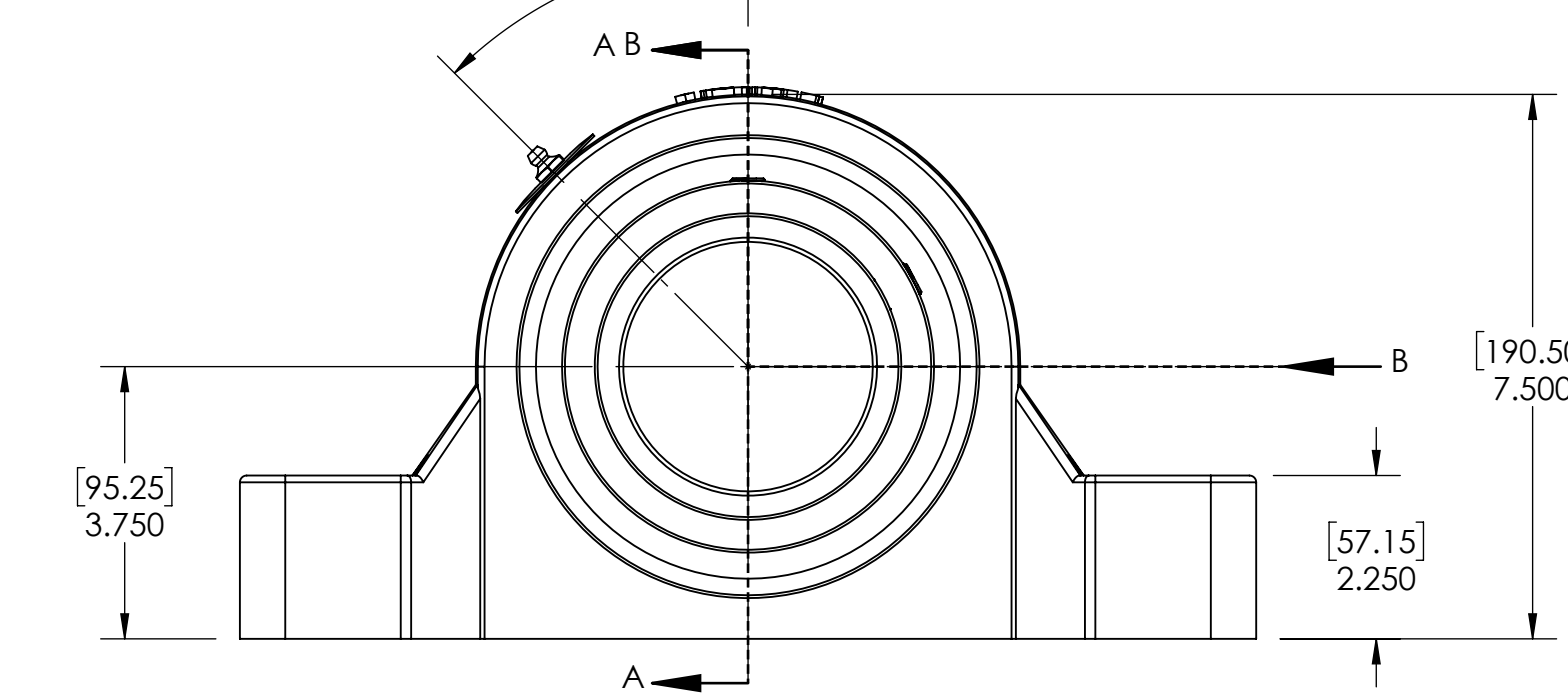
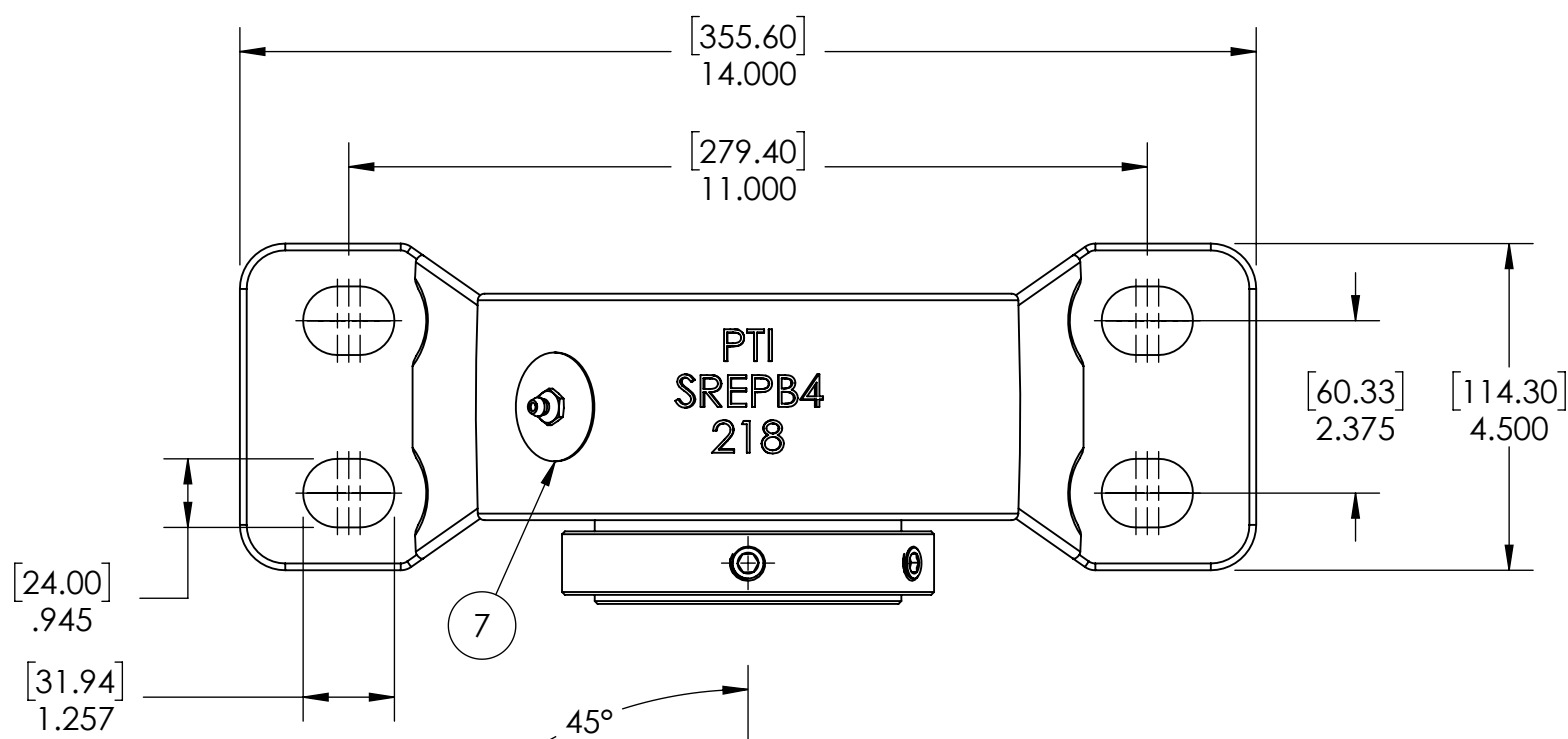


9 8 7 6 5 4 3 2 1

G F E D C B A



SECTION VIEW A-A

ITEM NO.	PART NUMBER	MATERIAL	COATING	QTY.
7	NP-SRE-NE	STEEL	N/A	1
6	1_8-27 ZERK	STEEL	ZINC PLATED	1
5	R3-476218	HNBR	N/A	2
4	OH160	STEEL	N/A	2
3	SR-FR160X6	STEEL	N/A	1
2	476218-307	BEARING STEEL	N/A	1
1	SREP4-218	DUCTILE IRON	POWDER COAT	1

SPECIFICATIONS		SOLVE		WEIGHT	
UNITS	IN [mm]	INDUSTRIAL MOTION GROUP		41.35 LBS	
LOAD RATINGS	C 62950 LBS Co 83180 LBS	PTI		SEE BOM	
SPEED RATING	1250 RPM	DWG. NO.		SEE BOM	
GREASE TYPE	NLGI #2	DATE		03/19/2025	
GREASE FILL	40-60%	BY		REVISION DESCRIPTION	
OPERATING TEMP	-22°F - 290°F	APPROVED		ITEM DESCRIPTION:	
SET SCREW SIZE	1/2-20UNF-7/8	THIRD ANGLE PROJECTION		SRE-PB4-307R3NE	
SET SCREW TORQUE	620 IN-LBS	PROPRIETARY AND CONFIDENTIAL		SCALE	
SET SCREW AXIAL RETENTION	900 LBS	THE INFORMATION CONTAINED IN THIS DRAWING IS THE SOLE PROPERTY OF SOLVE IMAGING. ANY REPRODUCTION IN PART OR AS A WHOLE WITHOUT THE WRITTEN PERMISSION OF SOLVE IMAGING IS PROHIBITED.		1:8	
				REV	
				-	

9 8 7 6 5 4 3 2 1

A B C D E F G