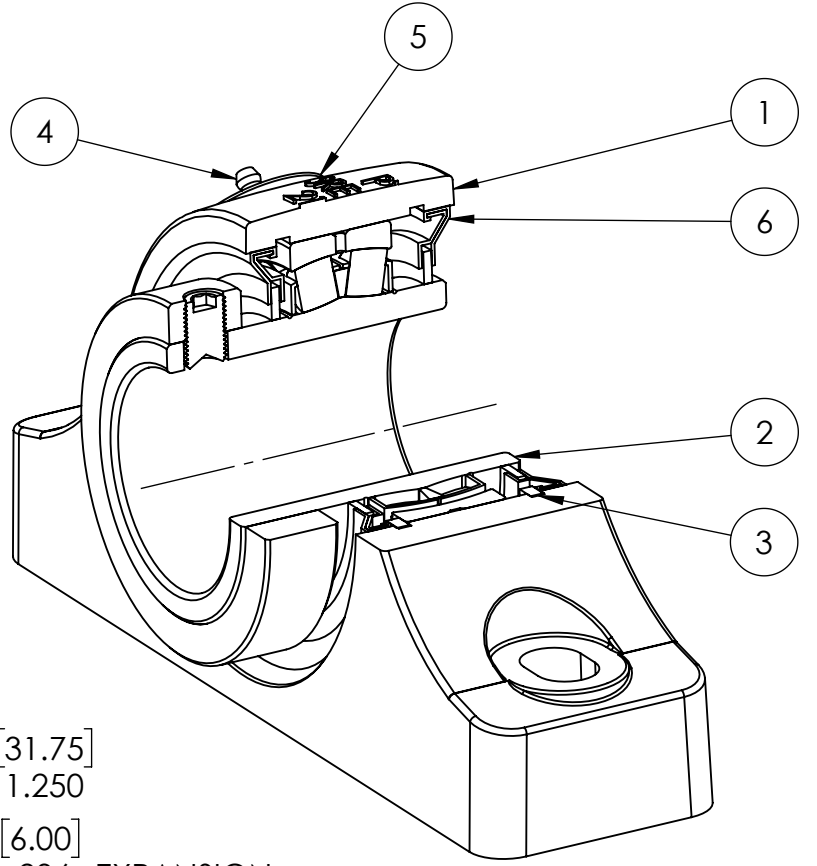
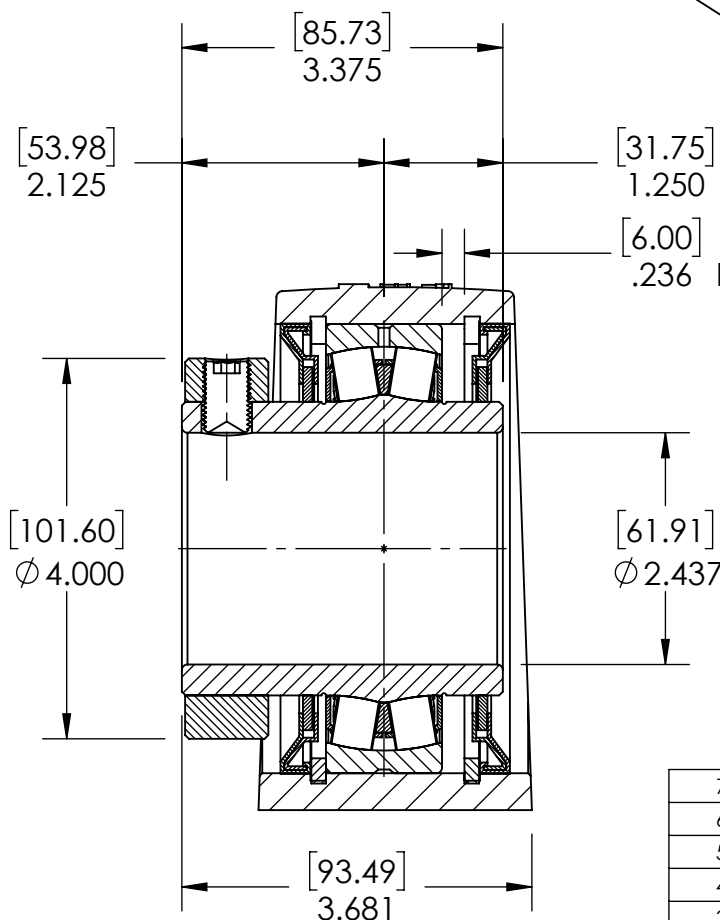
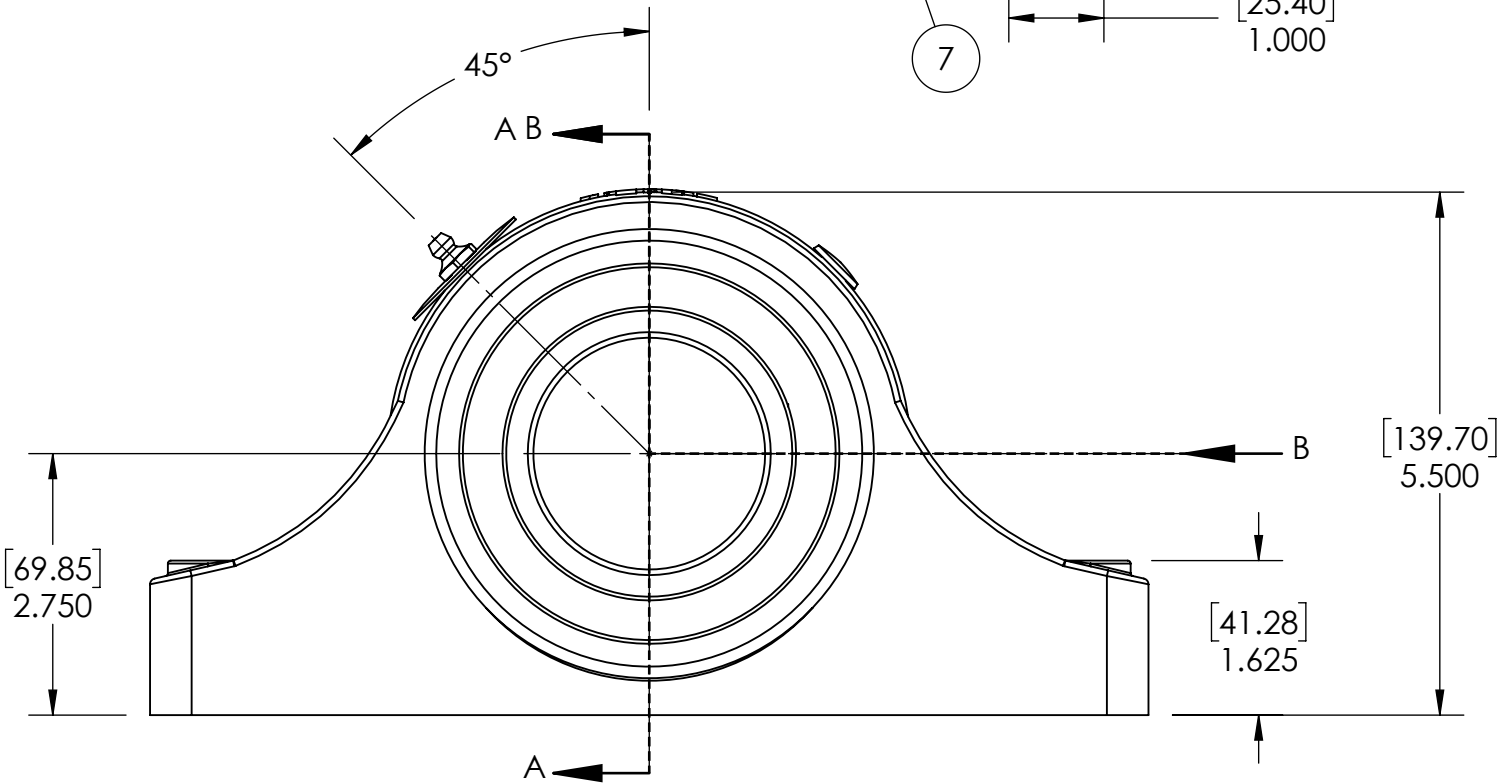
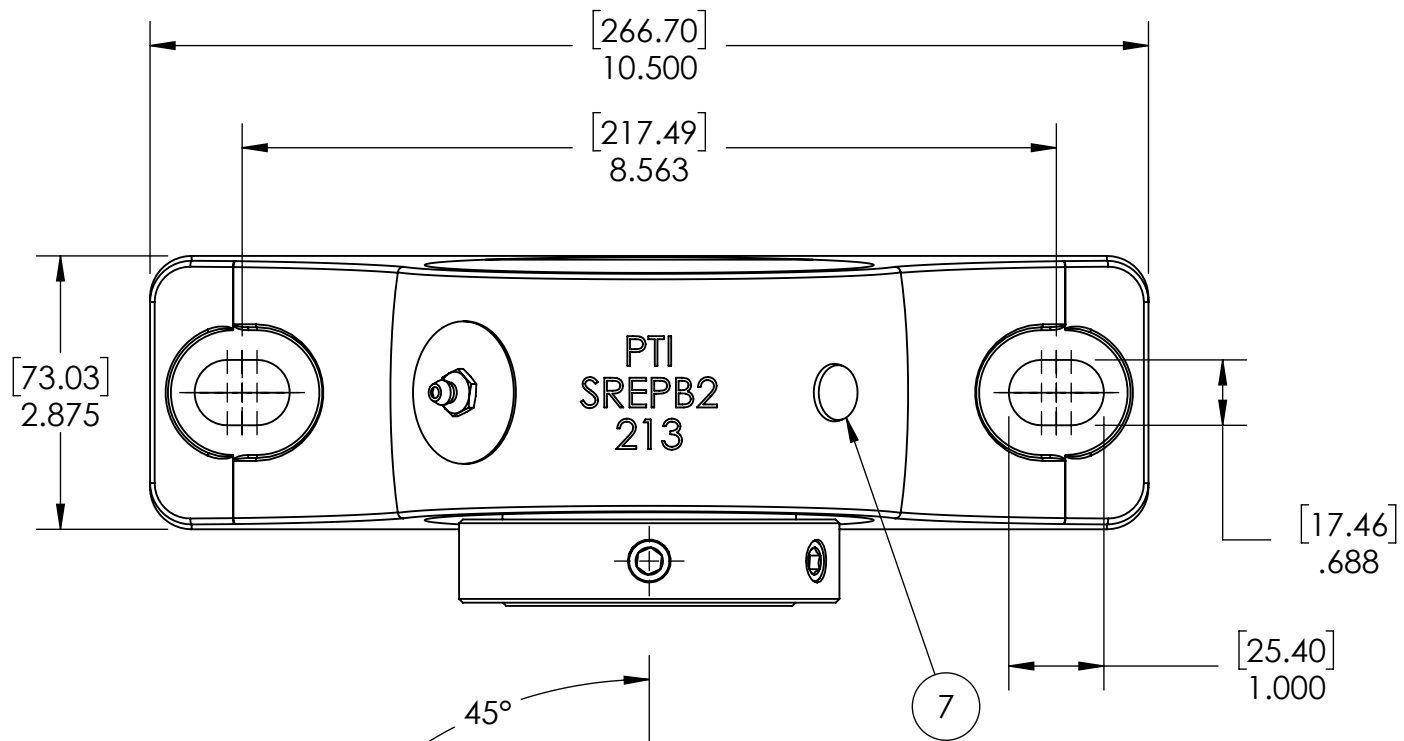


9 8 7 6 5 4 3 2 1

G F E D C B A



SECTION VIEW A-A

ITEM NO.	PART NUMBER	MATERIAL	COATING	QTY.
7	9mm SCREW CAP	PLASTIC	N/A	1
6	TL-476213	TEFLON	N/A	2
5	NP-SRE-EX	STEEL	N/A	1
4	1_8-27 ZERK	STEEL	ZINC PLATED	1
3	OH120	STEEL	N/A	2
2	476213-207	BEARING STEEL	N/A	1
1	SREP2-213	DUCTILE IRON	POWDER COAT	1

SPECIFICATIONS		SOLVE		WEIGHT	
UNITS	IN [mm]	INDUSTRIAL MOTION GROUP		20.08 LBS	
LOAD RATINGS	C 37090 LBS Co 46090 LBS	PTI		MATERIAL SEE BOM	
SPEED RATING	2300 RPM	DWG. NO.		COATING SEE BOM	
GREASE TYPE	NLGI #2	DATE		DRAWN SEC 03/17/2025	
GREASE FILL	40-60%	BY		CHECKED FP 04/16/2025	
OPERATING TEMP	-100°F - 400°F	REVISION DESCRIPTION		APPROVED	
SET SCREW SIZE	1/2-20UNF-3/4	SRE-PB2-207TLXP		THIRD ANGLE PROJECTION	
SET SCREW TORQUE	620 IN-LBS	SCALE		PROPRIETARY AND CONFIDENTIAL	
SET SCREW AXIAL RETENTION	900 LBS	1:11		THE INFORMATION CONTAINED IN THIS DRAWING IS THE SOLE PROPERTY OF SOLVE IMG. ANY REPRODUCTION IN PART OR AS A WHOLE WITHOUT THE WRITTEN PERMISSION OF SOLVE IMG IS PROHIBITED.	
		REV			
		-			

9 8 7 6 5 4 3 2 1

A B C D E F G