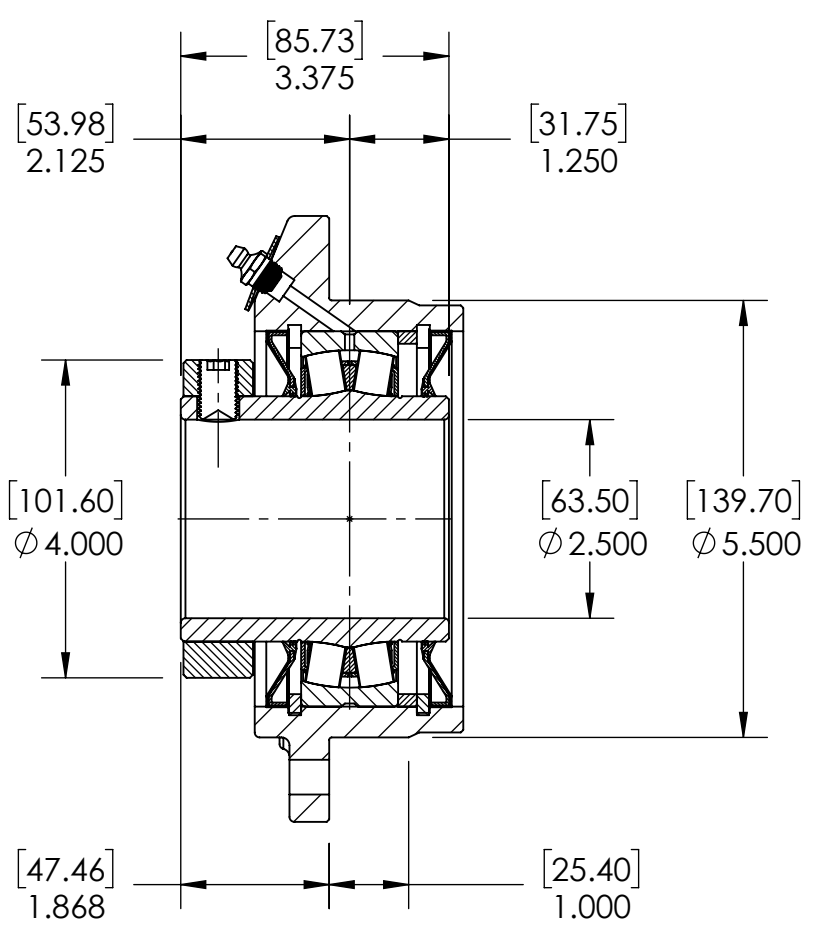
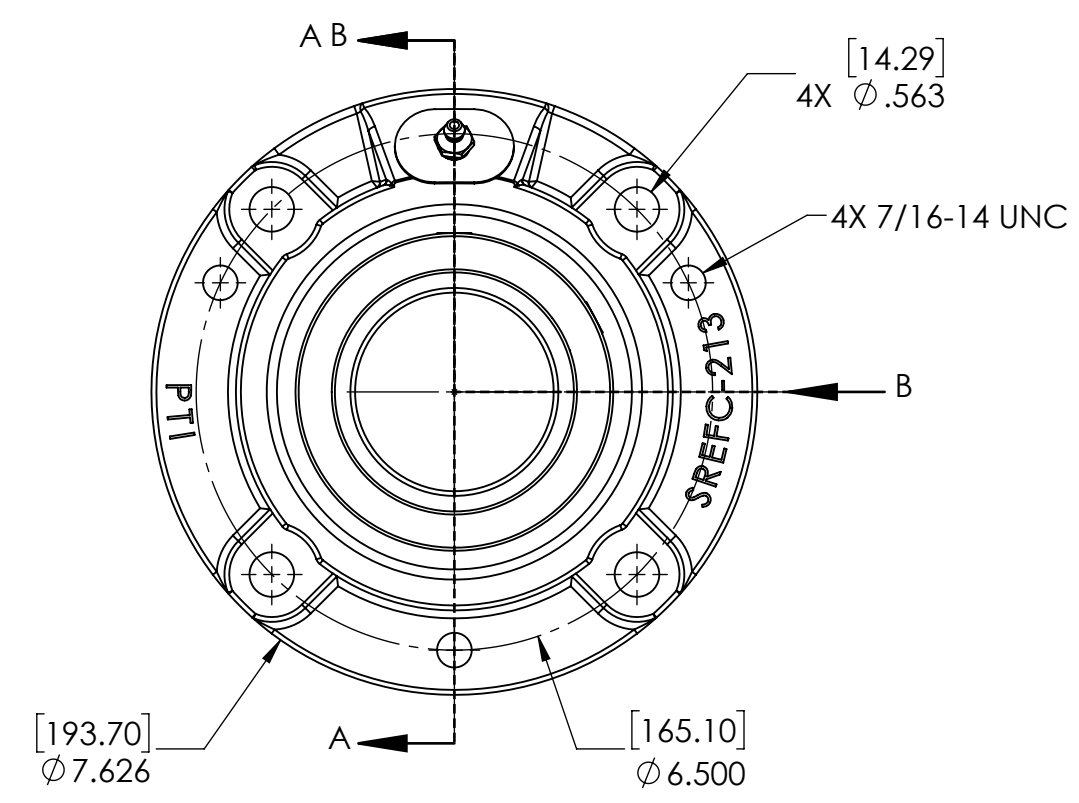
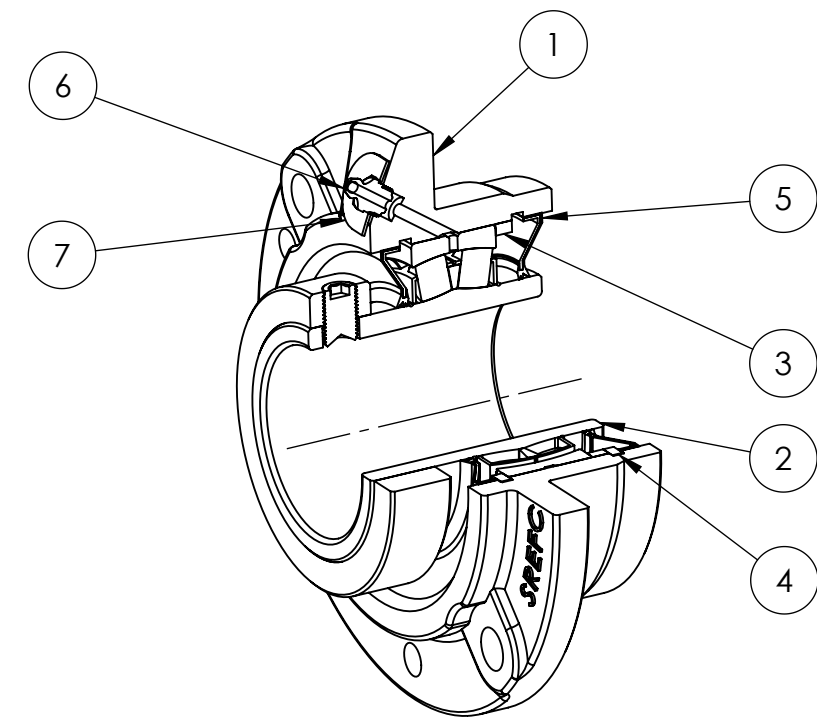
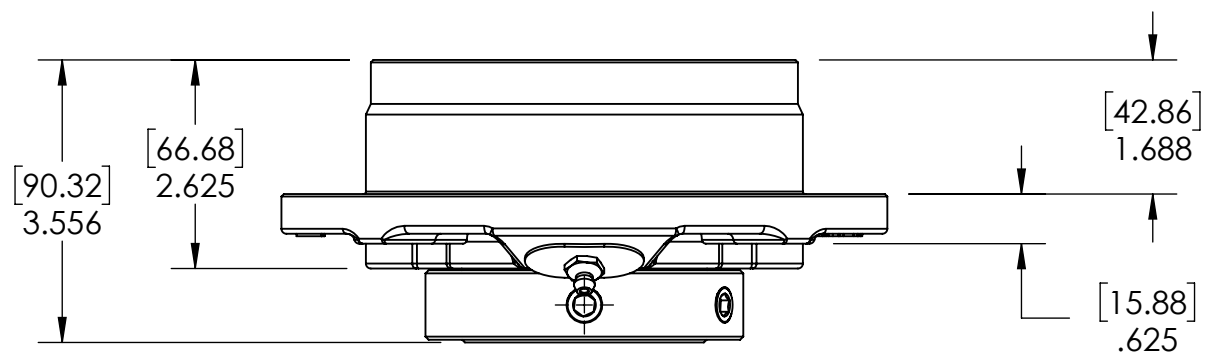


9 8 7 6 5 4 3 2 1

G F E D C B A



SECTION VIEW A-A

ITEM NO.	PART NUMBER	MATERIAL	COATING	QTY.
7	NPS-SRE-NE	STEEL	N/A	1
6	1_8-27 ZERK	STEEL	ZINC PLATED	1
5	R3-476213	HNBR	N/A	2
4	OH120	STEEL	N/A	2
3	SR-FR120X6	STEEL	N/A	1
2	476213-208	BEARING STEEL	N/A	1
1	SREFC-213	DUCTILE IRON	POWDER COAT	1

SPECIFICATIONS		WEIGHT	
UNITS	IN [mm]		13.87 LBS
LOAD RATINGS	C 37090 LBS Co 46090 LBS	MATERIAL	SEE BOM
SPEED RATING	1700 RPM	COATING	SEE BOM
GREASE TYPE	NLGI #2	DRAWN	SEC 03/14/2025
GREASE FILL	40-60%	CHECKED	FP 05/05/2025
OPERATING TEMP	-22°F - 290°F	APPROVED	
SET SCREW SIZE	1/2-20UNF-3/4	THIRD ANGLE PROJECTION	
SET SCREW TORQUE	620 IN-LBS		
SET SCREW AXIAL RETENTION	900 LBS		



PROPRIETARY AND CONFIDENTIAL
THE INFORMATION CONTAINED IN THIS DRAWING IS THE SOLE PROPERTY OF SOLVE IMAGING. ANY REPRODUCTION IN PART OR AS A WHOLE WITHOUT THE WRITTEN PERMISSION OF SOLVE IMAGING IS PROHIBITED.

DATE	BY	REVISION DESCRIPTION	REV
ITEM DESCRIPTION:			SCALE
SRE-FC-208R3NE			1:11
			REV
			-

9 8 7 6 5 4 3 2 1

A B C D E F G