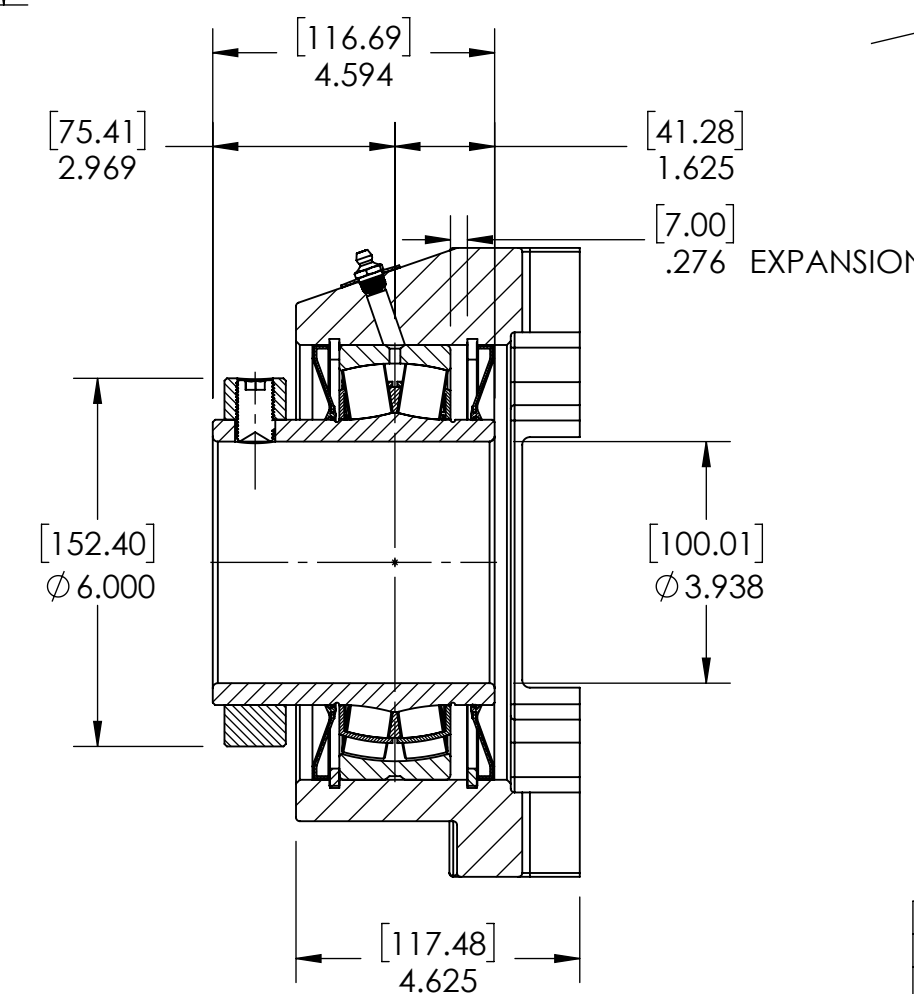
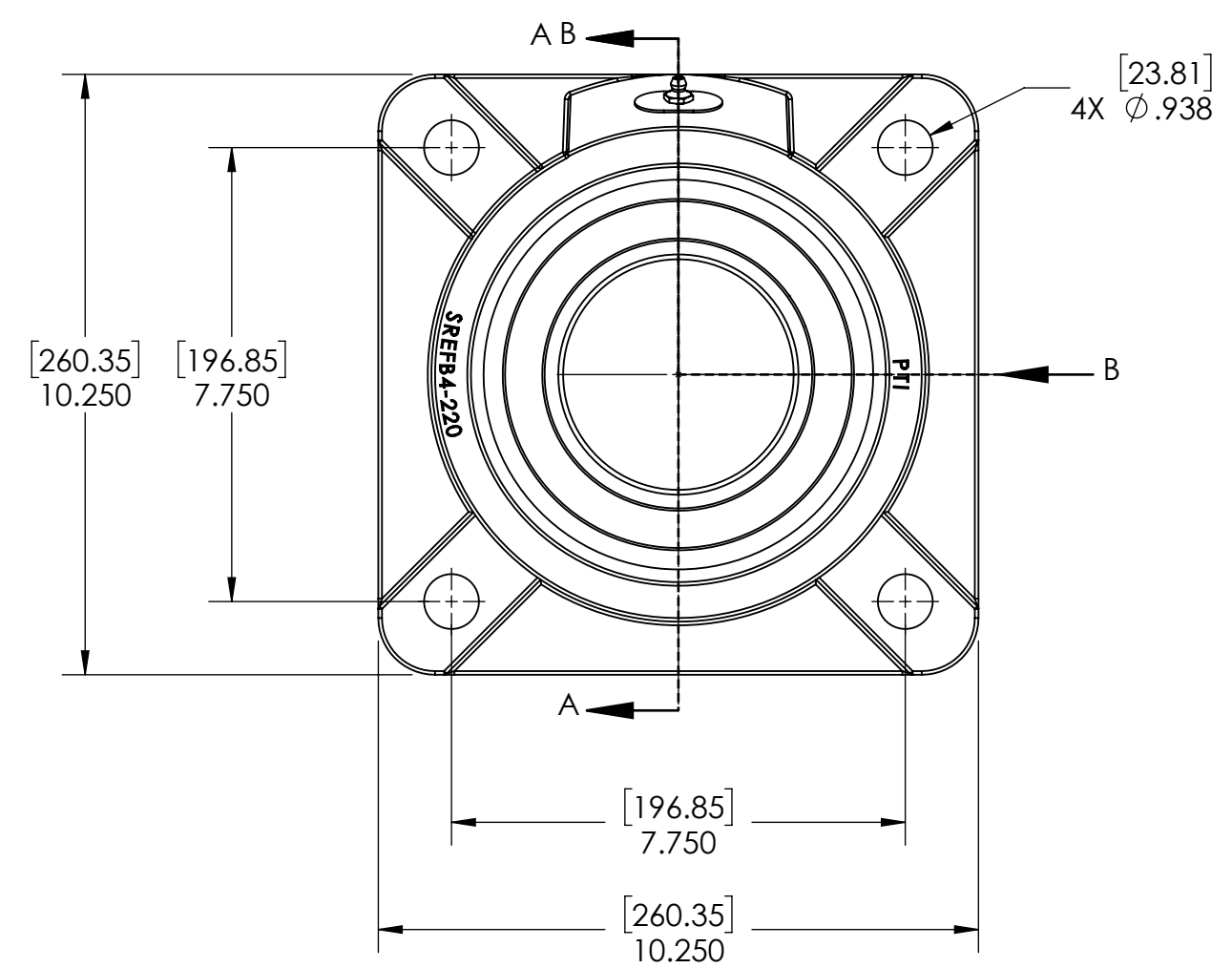
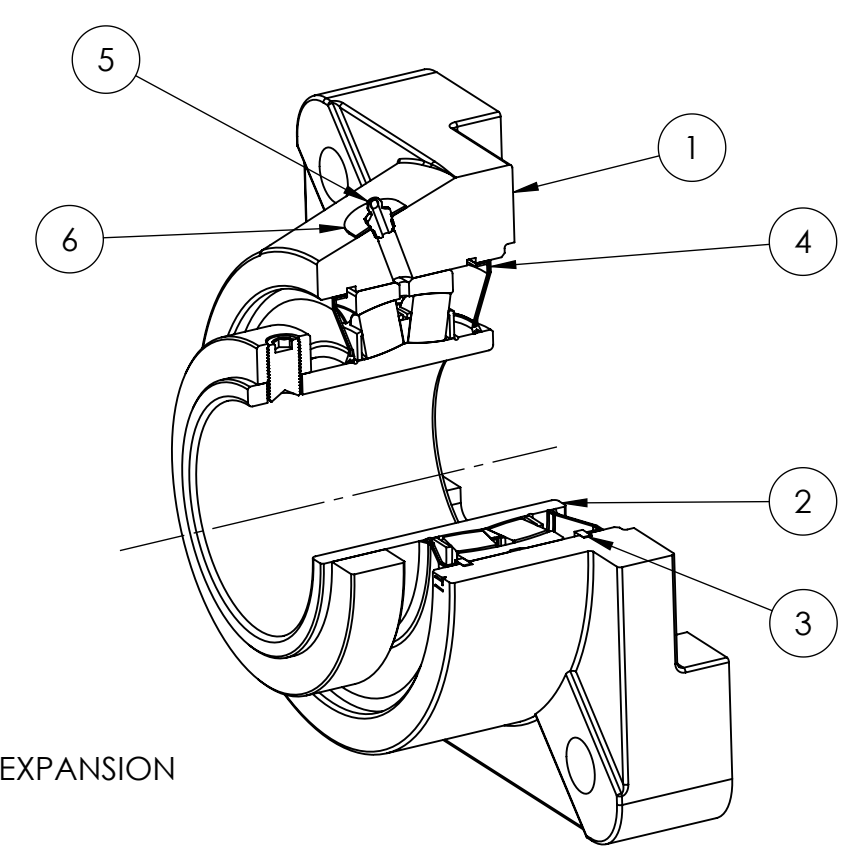
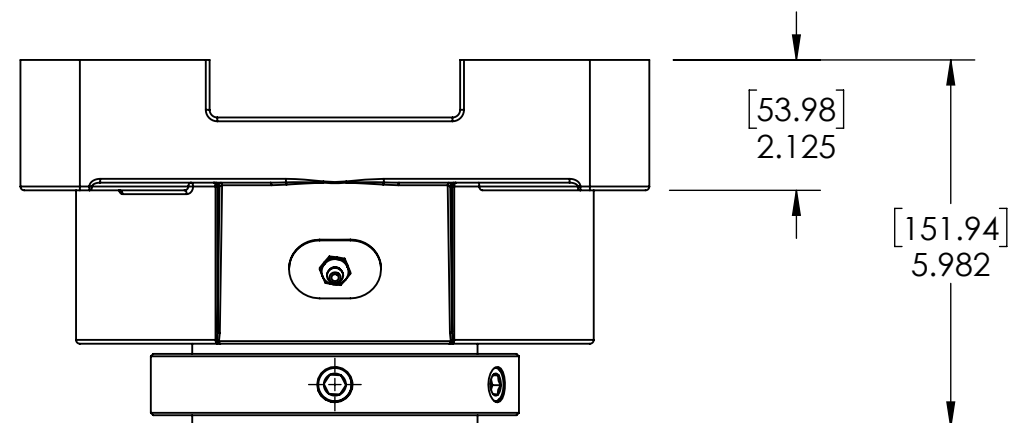


9 8 7 6 5 4 3 2 1

G
F
E
D
C
B
A

G
F
E
D
C
B
A



SECTION VIEW A-A

ITEM NO.	PART NUMBER	MATERIAL	COATING	QTY.
6	NPS-SRE-EX	STEEL	N/A	1
5	1_8-27 ZERK	STEEL	ZINC PLATED	1
4	R3-476220	HNBR	N/A	2
3	OH180	STEEL	N/A	2
2	476220-315	BEARING STEEL	N/A	1
1	SREFB4-220	DUCTILE IRON	POWDER COAT	1

SPECIFICATIONS		SOLVE		WEIGHT	
UNITS	IN [mm]	INDUSTRIAL MOTION GROUP		54.94 LBS	
LOAD RATINGS	C 84300 LBS Co 112400LBS	PTI		MATERIAL SEE BOM	
SPEED RATING	1100 RPM	DWG. NO.		COATING SEE BOM	
GREASE TYPE	NLGI #2	PROPRIETARY AND CONFIDENTIAL		DRAWN SEC 03/17/2025	
GREASE FILL	40-60%	THE INFORMATION CONTAINED IN THIS DRAWING IS THE SOLE PROPERTY OF SOLVE IMAGING. ANY REPRODUCTION IN PART OR AS A WHOLE WITHOUT THE WRITTEN PERMISSION OF SOLVE IMAGING IS PROHIBITED.		CHECKED FP 04/11/2025	
OPERATING TEMP	-22°F - 290°F	THIRD ANGLE PROJECTION		APPROVED	
SET SCREW SIZE	5/8-18UNF-1	DATE		BY	
SET SCREW TORQUE	1325 IN-LBS	REVISION DESCRIPTION		REV	
SET SCREW AXIAL RETENTION	1200 LBS	ITEM DESCRIPTION:		SCALE	

DATE	BY	REVISION DESCRIPTION	REV
		SRE-FB4-315R3XP	1:8
			-

9 8 7 6 5 4 3 2 1