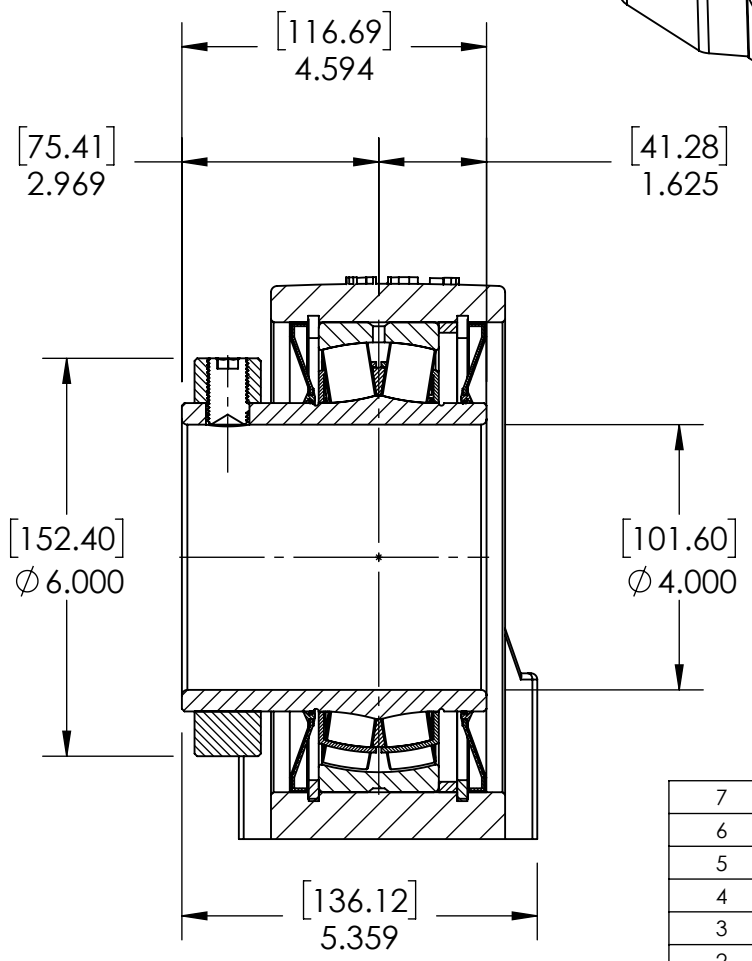
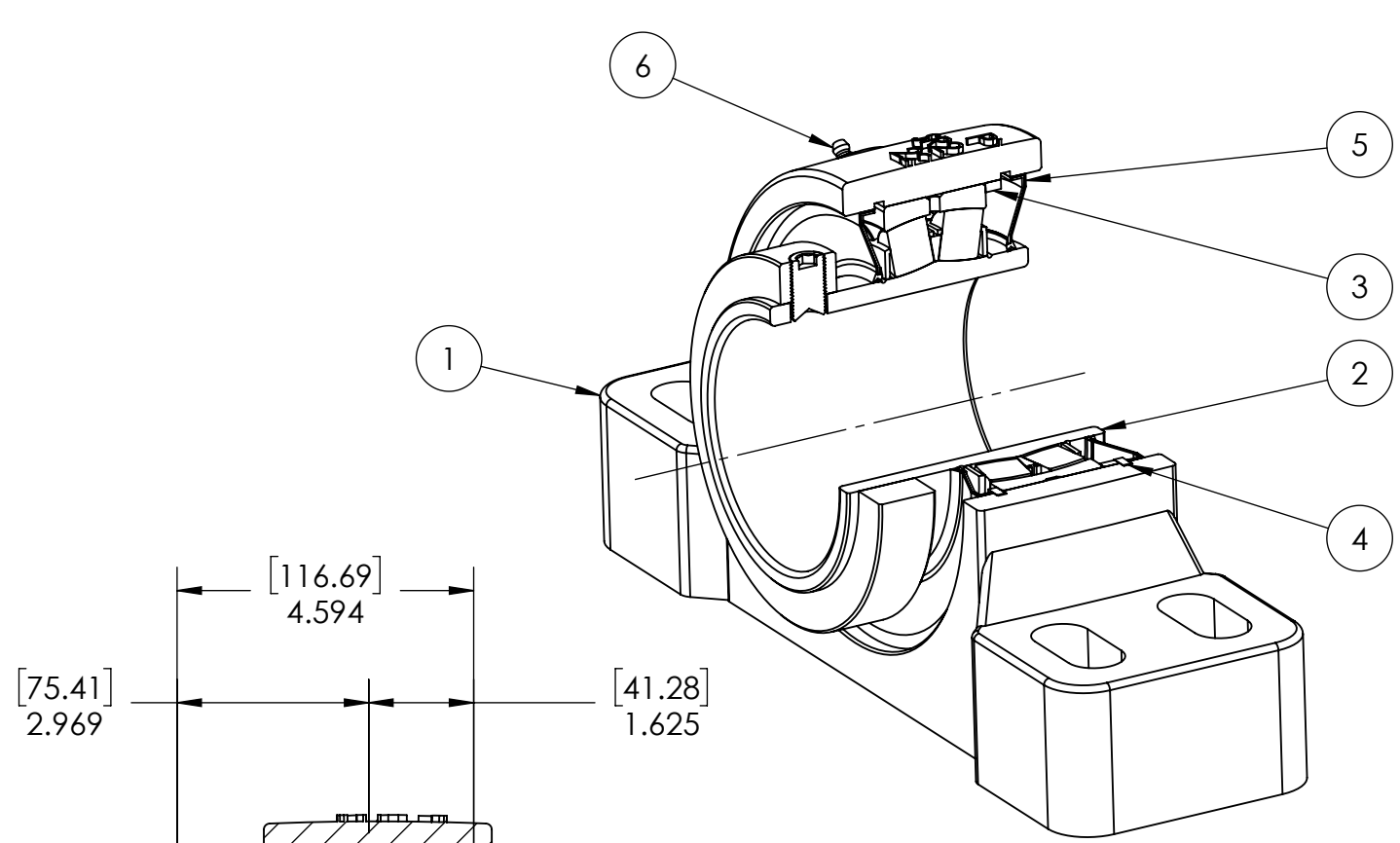
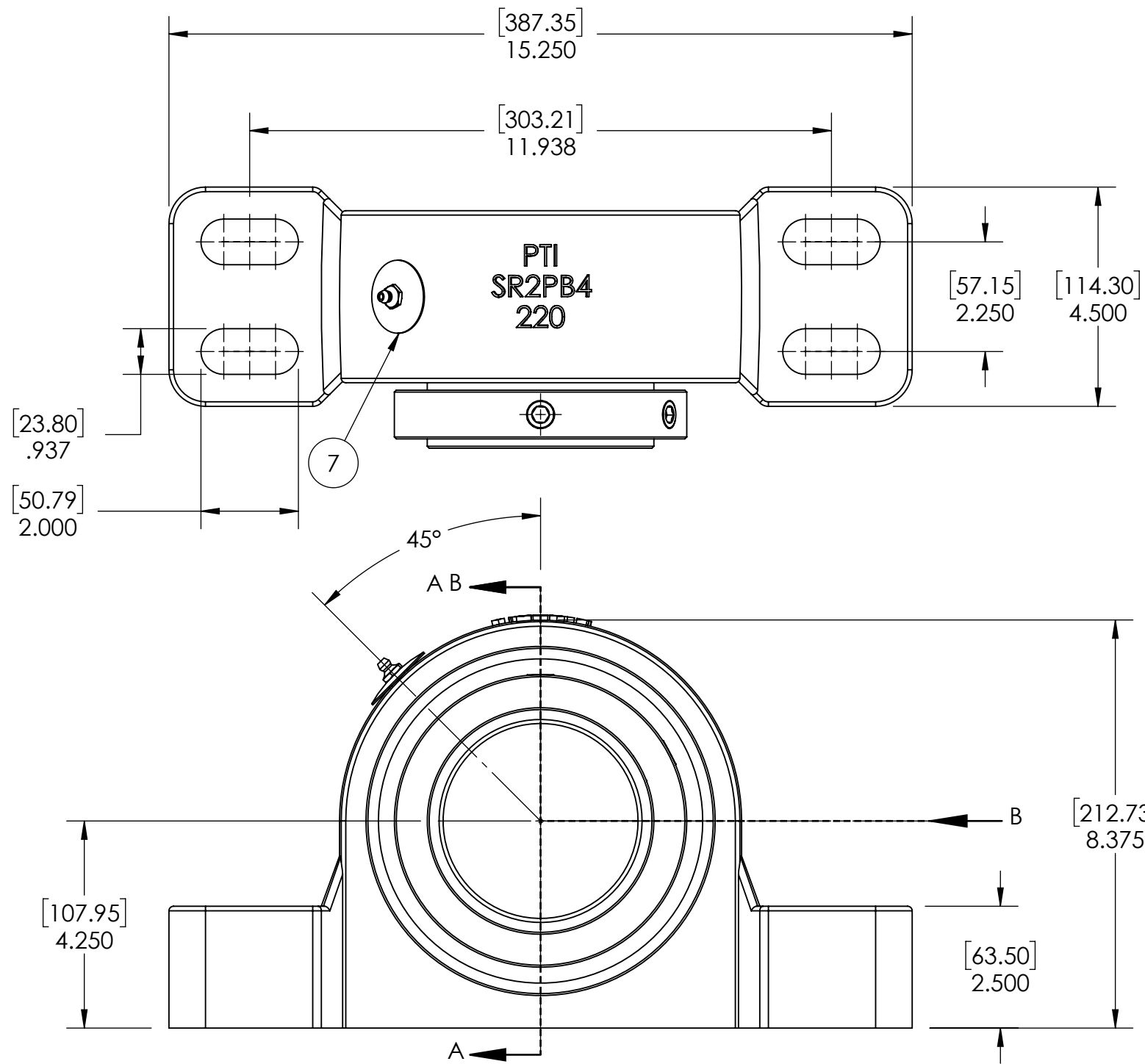


9 8 7 6 5 4 3 2 1

G F E D C B A



SECTION VIEW A-A

ITEM NO.	PART NUMBER	MATERIAL	COATING	QTY.
7	NP-SR2-NE	STEEL	N/A	1
6	1_8-27 ZERK	STEEL	ZINC PLATED	1
5	R3-476220	HNBR	N/A	2
4	OH180	STEEL	N/A	2
3	SR-FR180X7	STEEL	N/A	1
2	476220-400	BEARING STEEL	N/A	1
1	SR2PB4-220	DUCTILE IRON	POWDER COAT	1

SPECIFICATIONS		WEIGHT	
UNITS	IN [mm]		52.85 LBS
LOAD RATINGS	C 84300 LBS Co 112400LBS	MATERIAL	SEE BOM
SPEED RATING	1100 RPM	COATING	SEE BOM
GREASE TYPE	NLGI #2	DRAWN	SEC 03/19/2025
GREASE FILL	40-60%	CHECKED	FP 04/15/2025
OPERATING TEMP	-22°F - 290°F	APPROVED	
SET SCREW SIZE	5/8-18UNF-1	THIRD ANGLE PROJECTION	
SET SCREW TORQUE	1325 IN-LBS		
SET SCREW AXIAL RETENTION	1200 LBS		



PROPRIETARY AND CONFIDENTIAL
THE INFORMATION CONTAINED IN THIS DRAWING IS THE SOLE PROPERTY OF SOLVE IMG. ANY REPRODUCTION IN PART OR AS A WHOLE WITHOUT THE WRITTEN PERMISSION OF SOLVE IMG IS PROHIBITED.

DATE	BY	REVISION DESCRIPTION	REV
ITEM DESCRIPTION:			SCALE
SR2-PB4-400R3NE			1:7
			REV
			-

9 8 7 6 5 4 3 2 1

A B C D E F G