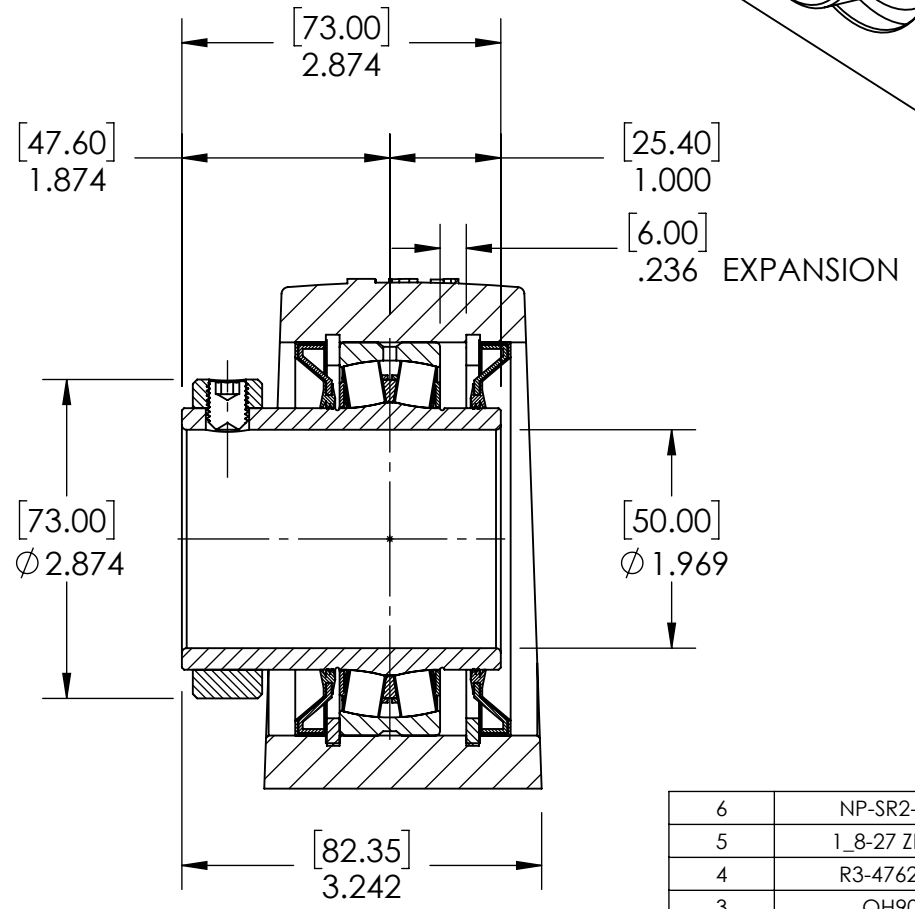
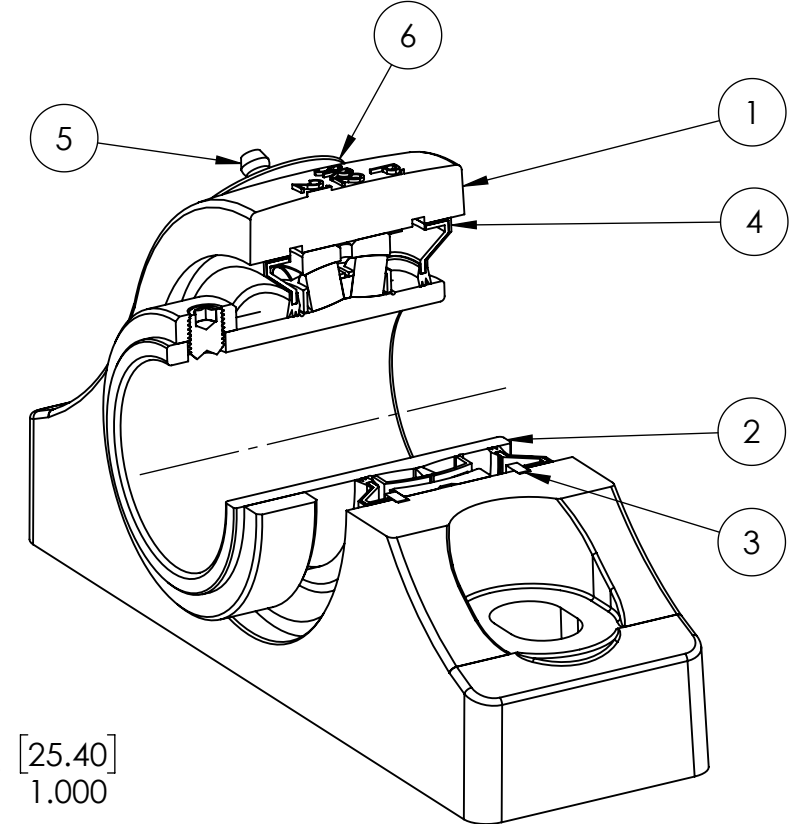
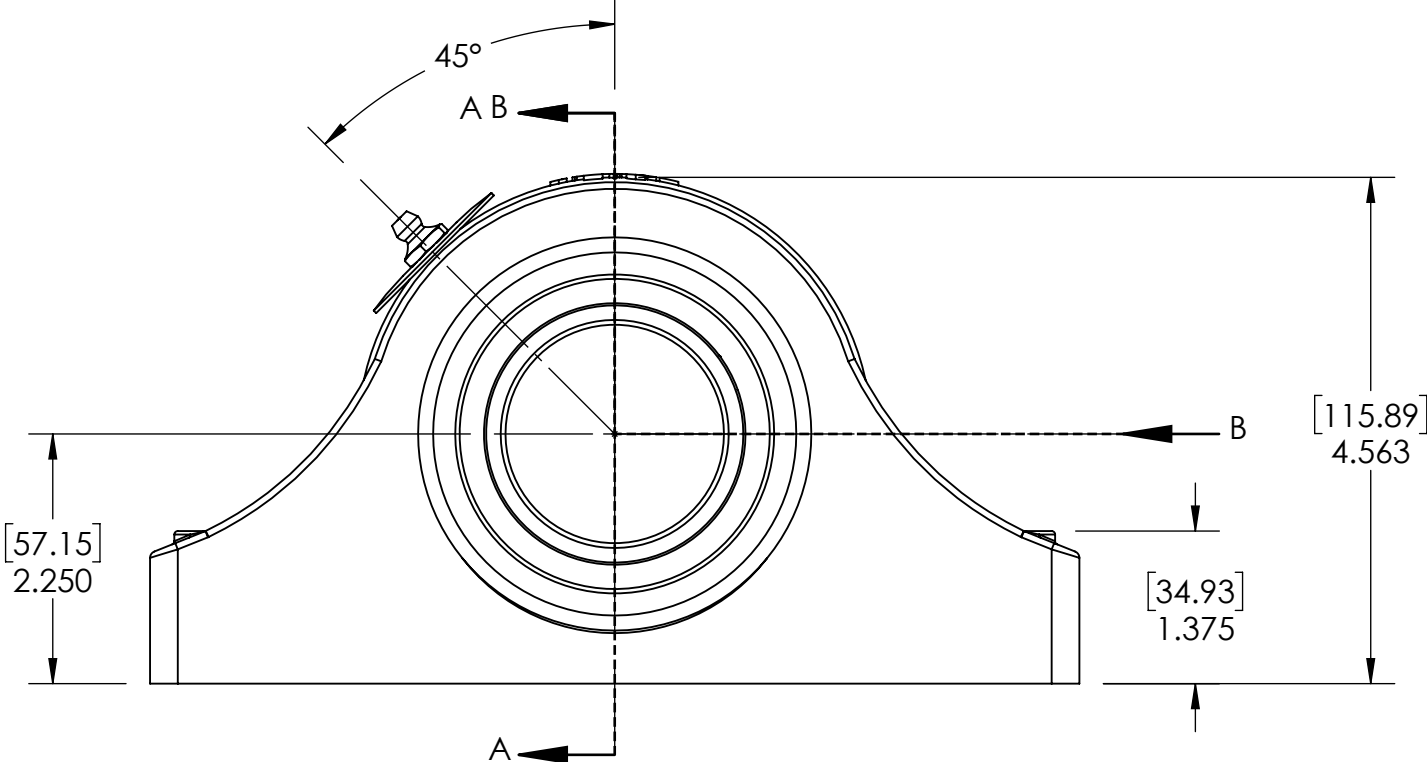
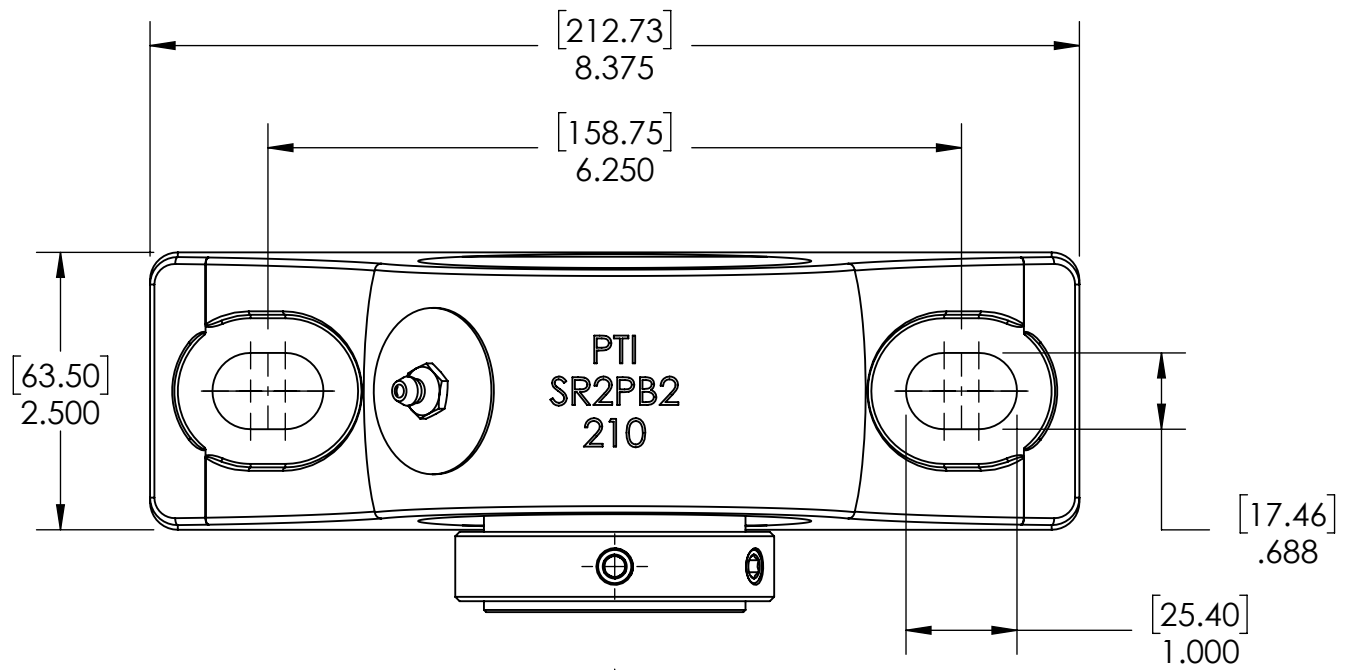


9 8 7 6 5 4 3 2 1

G
F
E
D
C
B
A

G
F
E
D
C
B
A



SECTION VIEW A-A

ITEM NO.	PART NUMBER	MATERIAL	COATING	QTY.
6	NP-SR2-EX	STEEL	N/A	1
5	1_8-27 ZERK	STEEL	ZINC PLATED	1
4	R3-476210	HNBR	N/A	2
3	OH90	STEEL	N/A	2
2	476210-50MM	BEARING STEEL	N/A	1
1	SR2PB2-210	DUCTILE IRON	POWDER COAT	1

SPECIFICATIONS		SOLVE		WEIGHT			
UNITS	IN [mm]	INDUSTRIAL MOTION GROUP		11.16 LBS			
LOAD RATINGS	C 20230 LBS Co 24730 LBS			SEE BOM			
SPEED RATING	2225 RPM	SIZE	B	DRAWN	SEC 03/18/2025		
GREASE TYPE	NLGI #2	PTI		CHECKED	FP 04/15/2025		
GREASE FILL	40-60%			APPROVED			
OPERATING TEMP	-22°F - 290°F	DWG. NO.		THIRD ANGLE PROJECTION			
SET SCREW SIZE	3/8-24UNF-1/2			PROPRIETARY AND CONFIDENTIAL			
SET SCREW TORQUE	250 IN-LBS			THE INFORMATION CONTAINED IN THIS DRAWING IS THE SOLE PROPERTY OF SOLVE IMG. ANY REPRODUCTION IN PART OR AS A WHOLE WITHOUT THE WRITTEN PERMISSION OF SOLVE IMG IS PROHIBITED.			
SET SCREW AXIAL RETENTION	515 LBS			DATE	BY	REVISION DESCRIPTION	REV

DATE	BY	REVISION DESCRIPTION	REV
ITEM DESCRIPTION: SR2-PB2-50MMR3XP			SCALE 1:13
			REV -

9 8 7 6 5 4 3 2 1