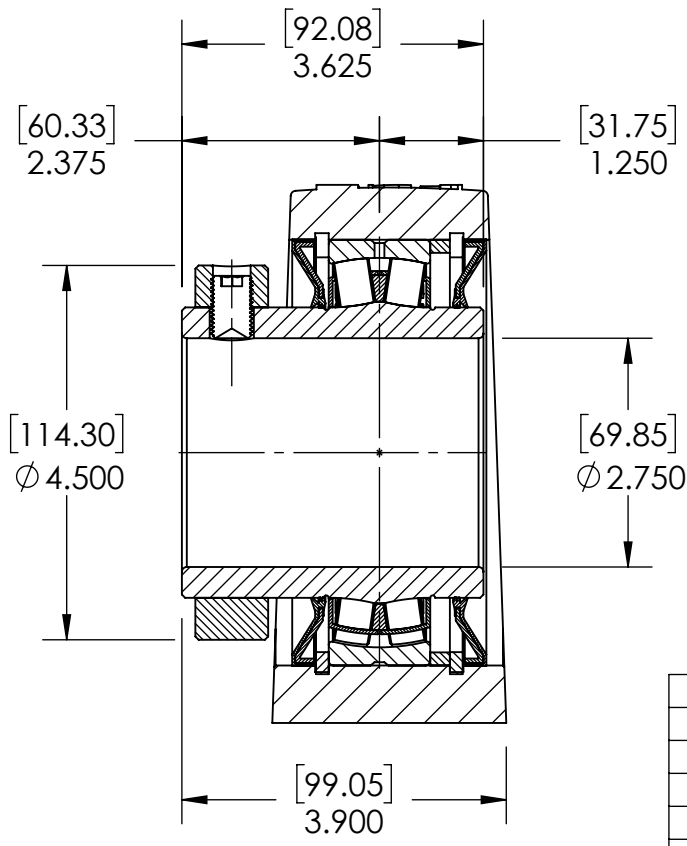
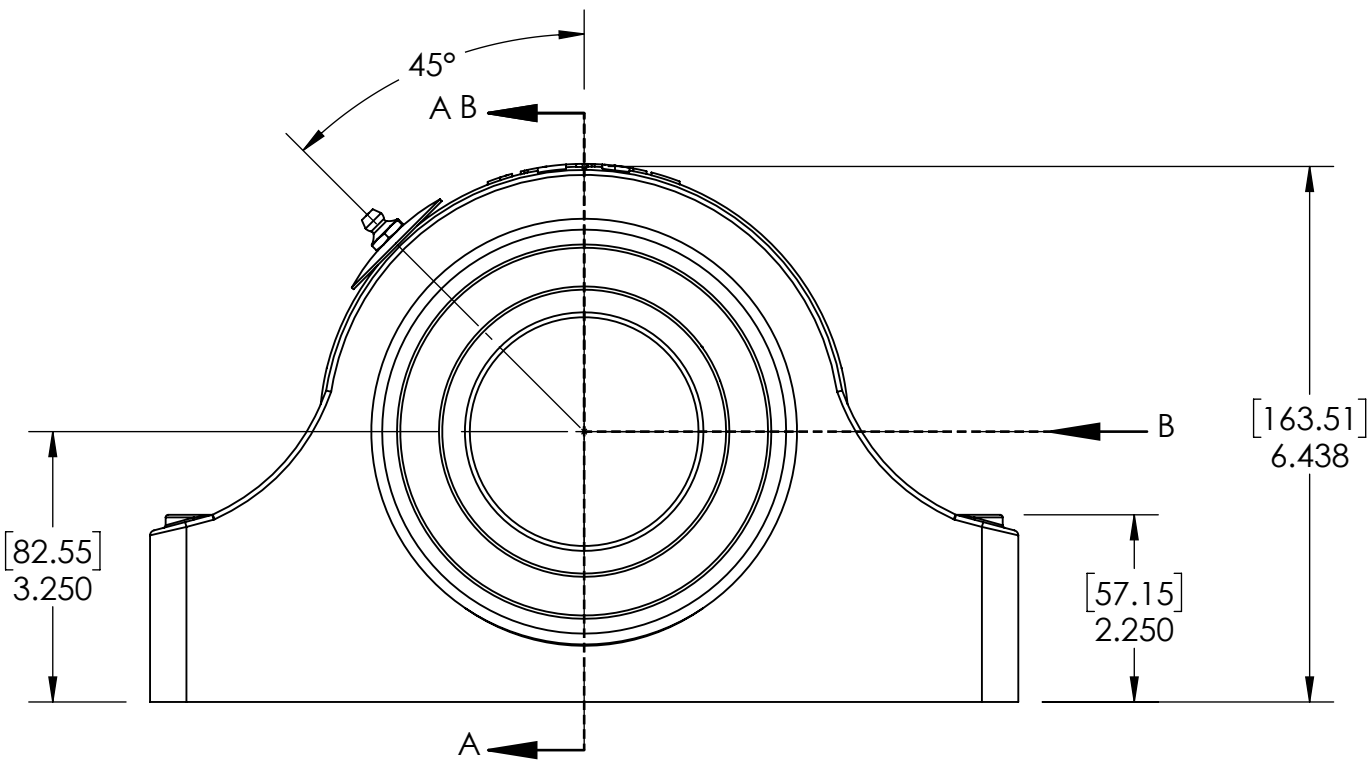
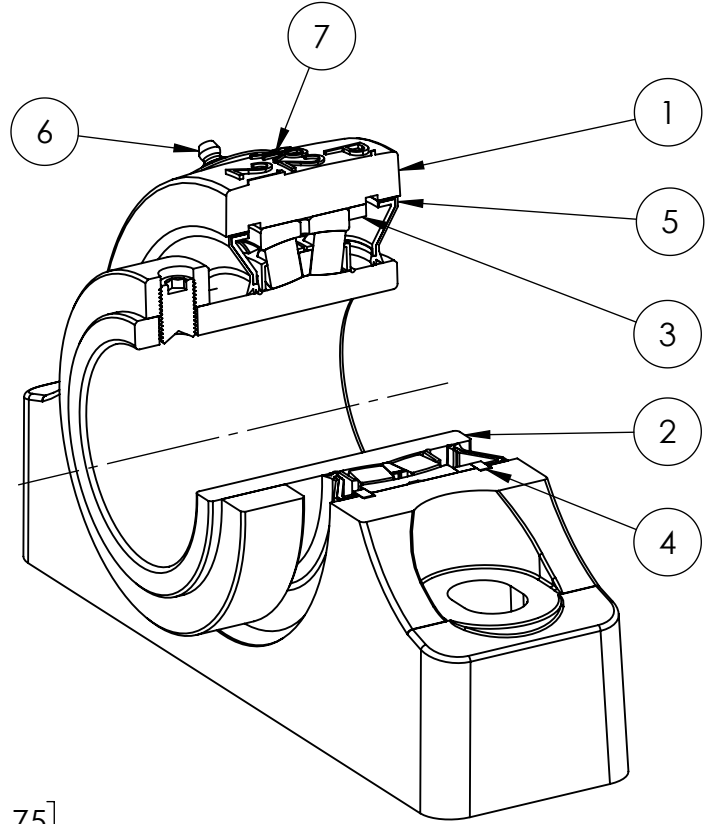
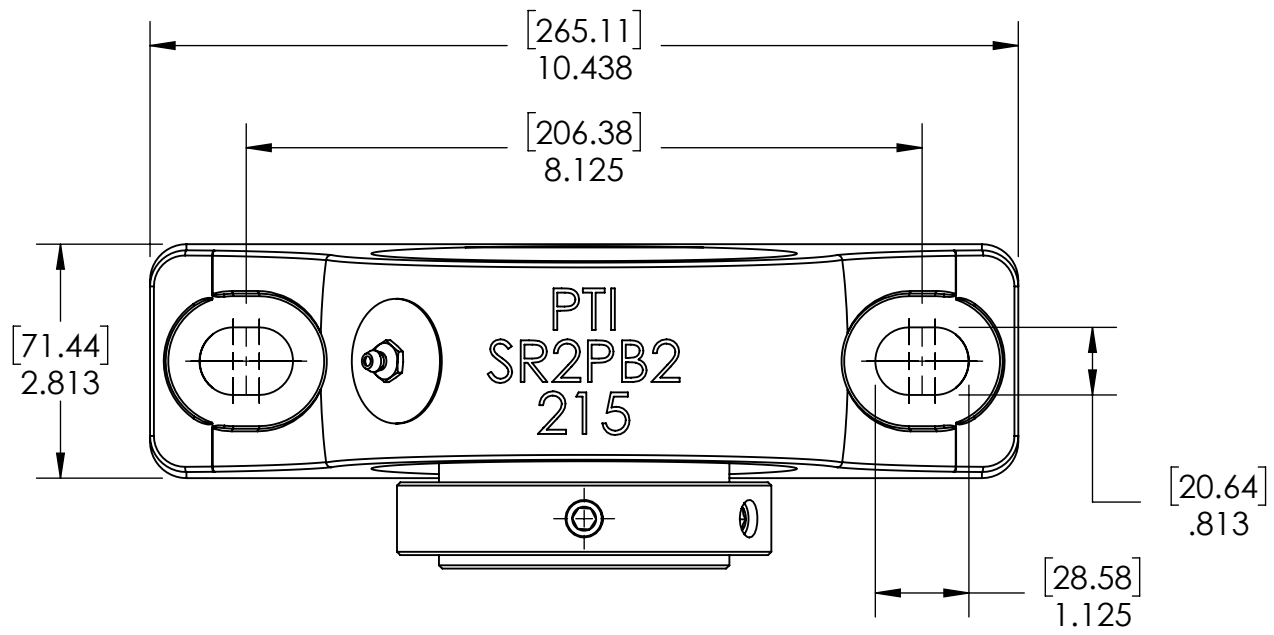


9 8 7 6 5 4 3 2 1

G  
F  
E  
D  
C  
B  
A

G  
F  
E  
D  
C  
B  
A



SECTION VIEW A-A

ITEM NO.	PART NUMBER	MATERIAL	COATING	QTY.
7	NP-SR2-NE	STEEL	N/A	1
6	1_8-27 ZERK	STEEL	ZINC PLATED	1
5	R3-476215	HNBR	N/A	2
4	OH130	STEEL	N/A	2
3	SR-FR130X6	STEEL	N/A	1
2	476215-212	BEARING STEEL	N/A	1
1	SR2PB2-215	DUCTILE IRON	POWDER COAT	1

SPECIFICATIONS		SOLVE		WEIGHT	
UNITS	IN [mm]	INDUSTRIAL MOTION GROUP		24.93 LBS	
LOAD RATINGS	C 41590 LBS Co 52830 LBS	PTI		SEE BOM	
SPEED RATING	1500 RPM	DWG. NO.		SEE BOM	
GREASE TYPE	NLGI #2	DATE		03/12/2025	
GREASE FILL	40-60%	BY		04/15/2025	
OPERATING TEMP	-22°F - 290°F	APPROVED		REVISION DESCRIPTION	
SET SCREW SIZE	1/2-20UNF-3/4	THIRD ANGLE PROJECTION		ITEM DESCRIPTION:	
SET SCREW TORQUE	620 IN-LBS	PROPRIETARY AND CONFIDENTIAL		SR2-PB2-212R3NE	
SET SCREW AXIAL RETENTION	900 LBS	THE INFORMATION CONTAINED IN THIS DRAWING IS THE SOLE PROPERTY OF SOLVE IMAGING. ANY REPRODUCTION IN PART OR AS A WHOLE WITHOUT THE WRITTEN PERMISSION OF SOLVE IMAGING IS PROHIBITED.		SCALE 1:10	

DATE	BY	REVISION DESCRIPTION	REV

9 8 7 6 5 4 3 2 1