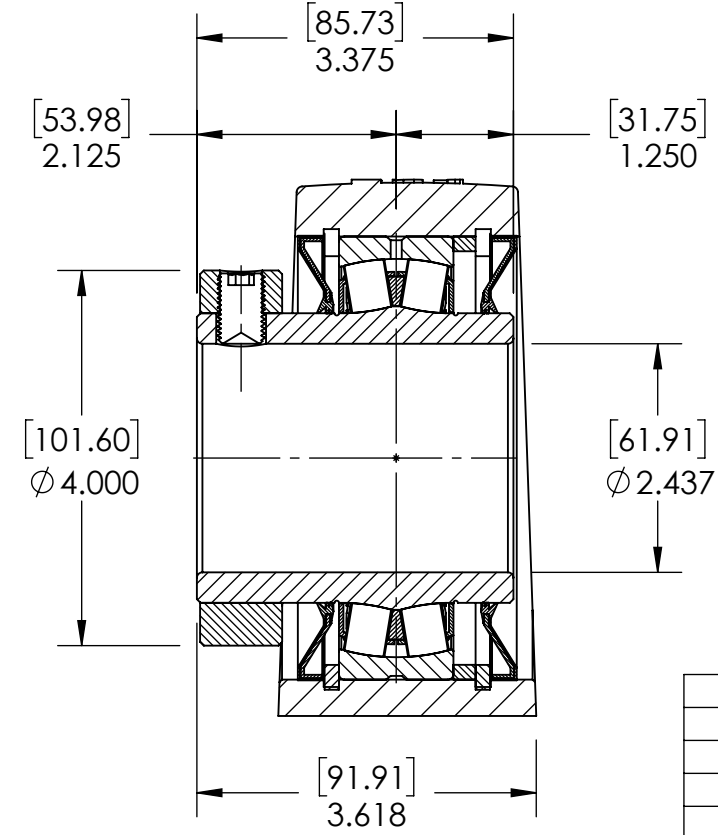
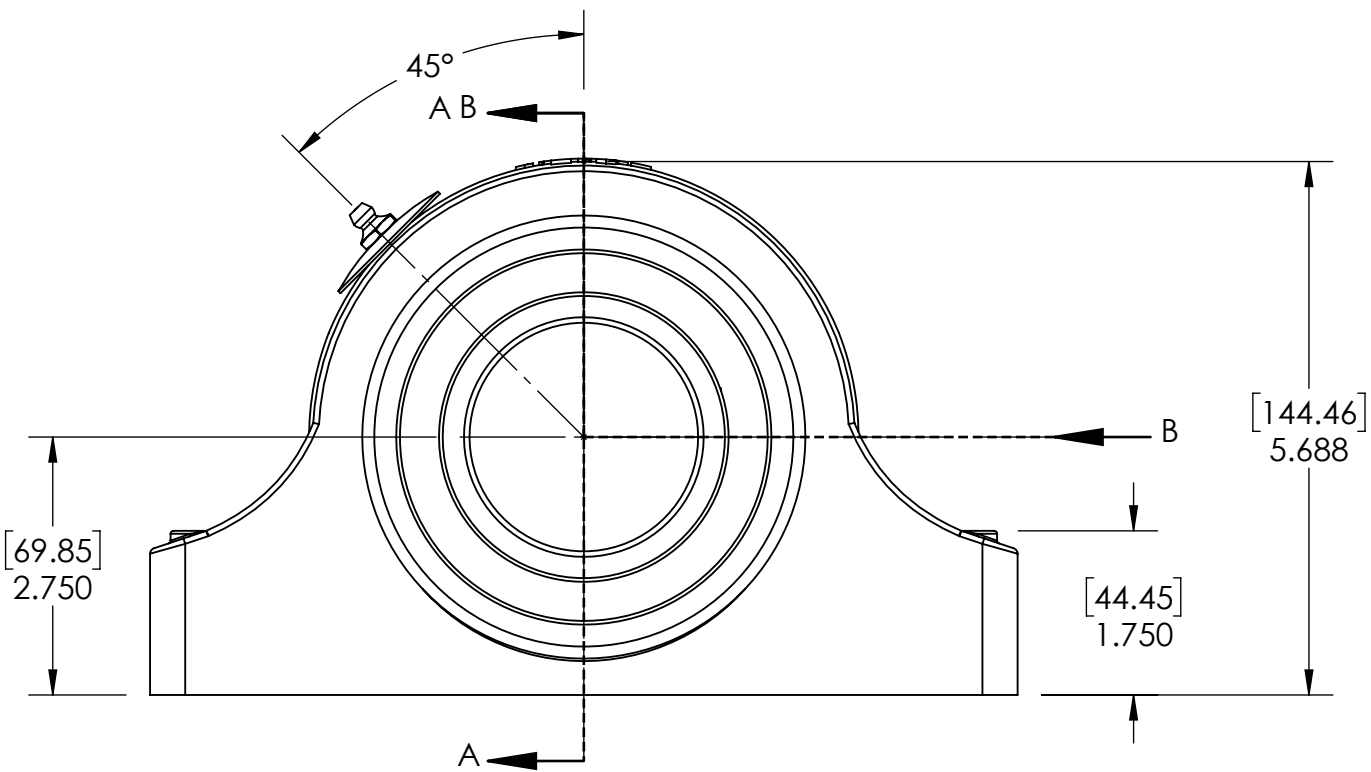
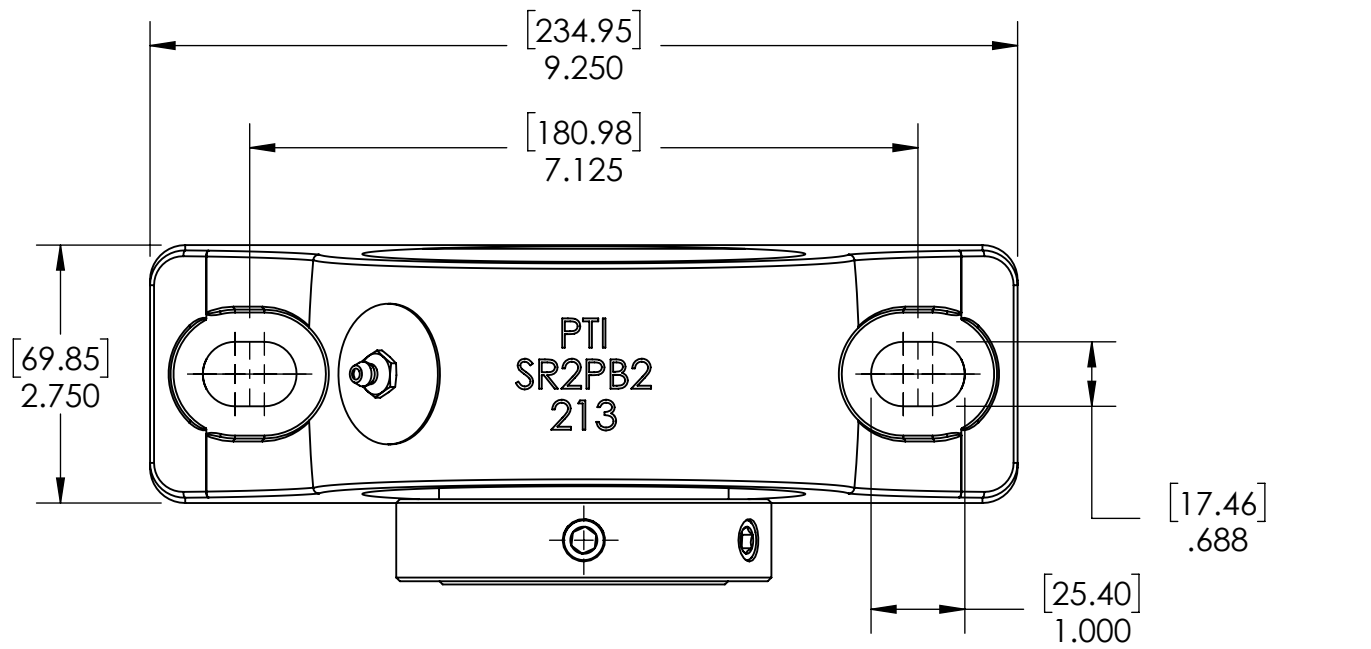


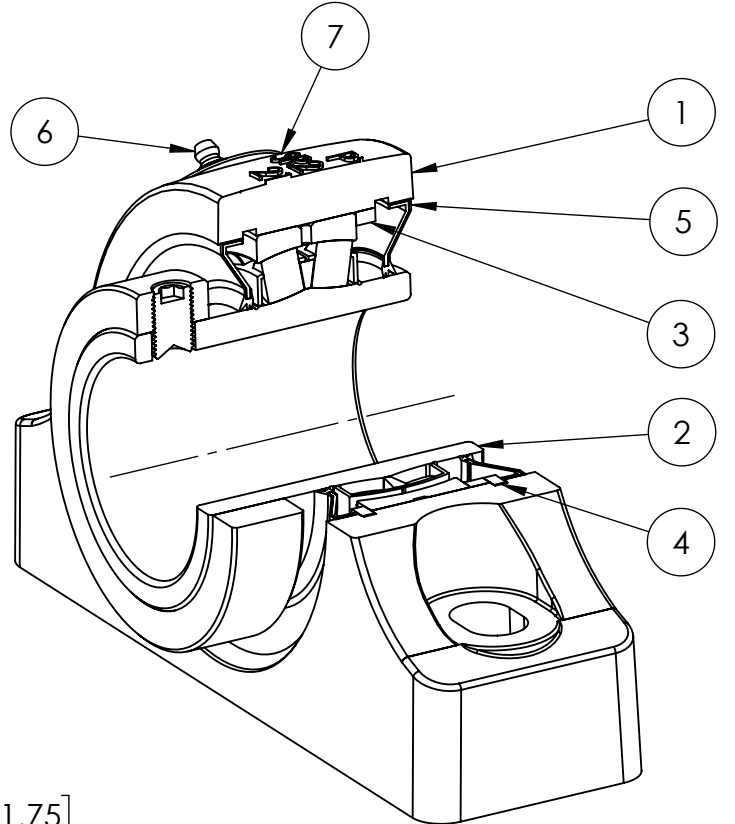
9 8 7 6 5 4 3 2 1

G
F
E
D
C
B
A

G
F
E
D
C
B
A



SECTION VIEW A-A



| ITEM NO. | PART NUMBER | MATERIAL | COATING | QTY. |
|----------|-------------|---------------|-------------|------|
| 7 | NP-SR2-NE | STEEL | N/A | 1 |
| 6 | 1_8-27 ZERK | STEEL | ZINC PLATED | 1 |
| 5 | R3-476213 | HNBR | N/A | 2 |
| 4 | OH120 | STEEL | N/A | 2 |
| 3 | SR-FR120X6 | STEEL | N/A | 1 |
| 2 | 476213-207 | BEARING STEEL | N/A | 1 |
| 1 | SR2PB2-213 | DUCTILE IRON | POWDER COAT | 1 |

| SPECIFICATIONS | |
|---------------------------|-----------------------------|
| UNITS | IN [mm] |
| LOAD RATINGS | C 37090 LBS Co 46090 LBS |
| SPEED RATING | 1700 RPM |
| GREASE TYPE | NLGI #2 |
| GREASE FILL | 40-60% |
| OPERATING TEMP | -22°F - 290°F |
| SET SCREW SIZE | 1/2-20UNF-3/4 |
| SET SCREW TORQUE | 620 IN-LBS |
| SET SCREW AXIAL RETENTION | 900 LBS |

SOLVE INDUSTRIAL MOTION GROUP
PTI
DWG. NO.

| | |
|--|----------------|
| WEIGHT | 18.50 LBS |
| MATERIAL | SEE BOM |
| COATING | SEE BOM |
| DRAWN | SEC 04/15/2025 |
| CHECKED | FP 04/15/2025 |
| APPROVED | |
| THIRD ANGLE PROJECTION | |
| <small>PROPRIETARY AND CONFIDENTIAL THE INFORMATION CONTAINED IN THIS DRAWING IS THE SOLE PROPERTY OF SOLVE IMG. ANY REPRODUCTION IN PART OR AS A WHOLE WITHOUT THE WRITTEN PERMISSION OF SOLVE IMG IS PROHIBITED.</small> | |

| DATE | BY | REVISION DESCRIPTION | REV |
|-----------------------------------|----|----------------------|------------|
| ITEM DESCRIPTION: SR2-PB2-207R3NE | | | SCALE 1:11 |
| | | | REV - |

9 8 7 6 5 4 3 2 1