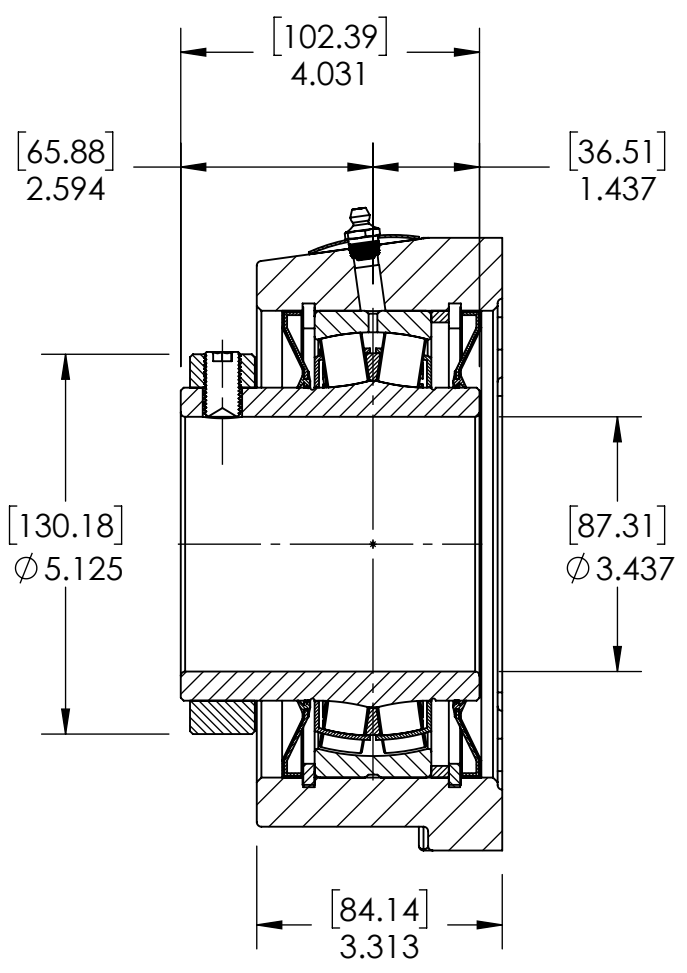
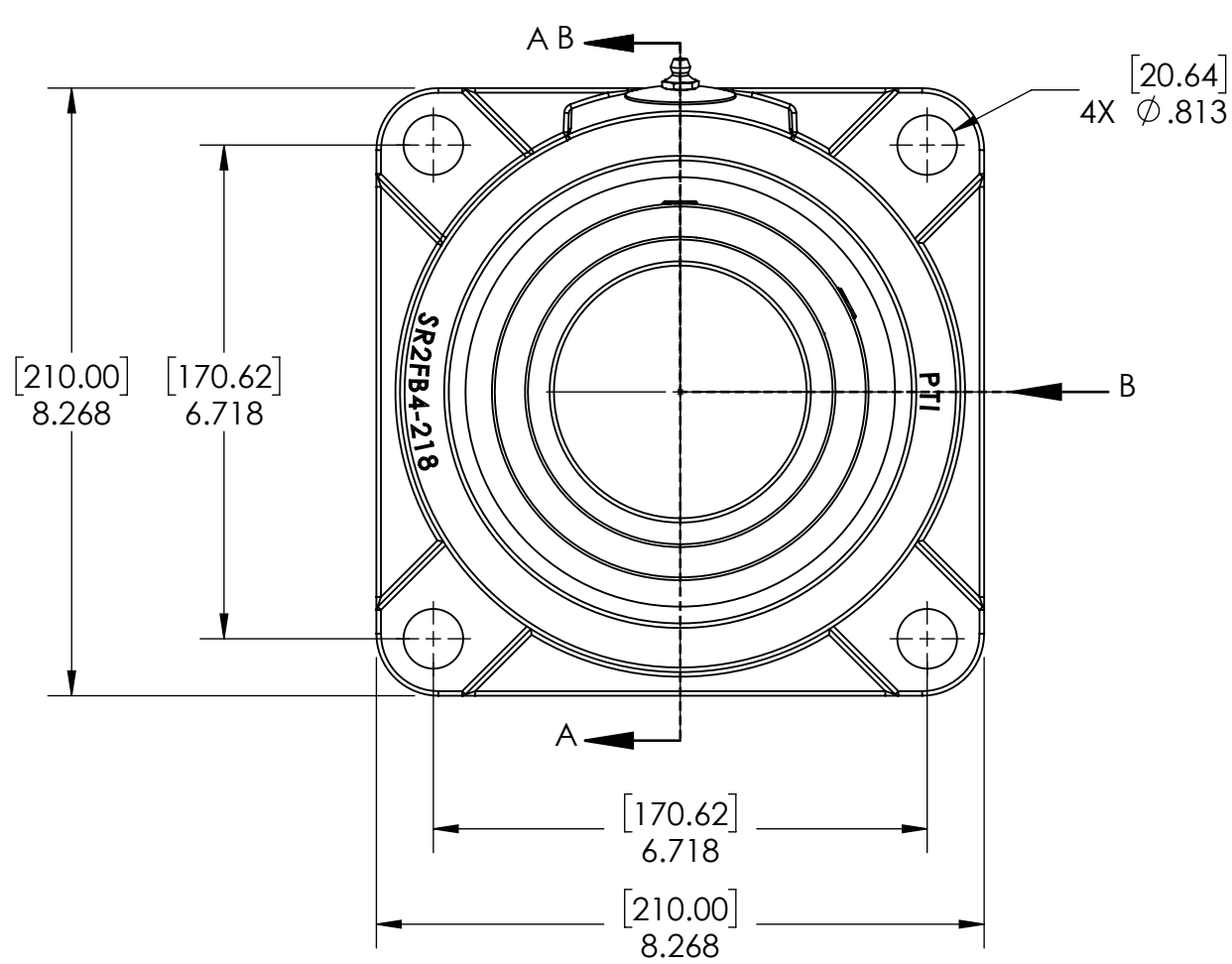
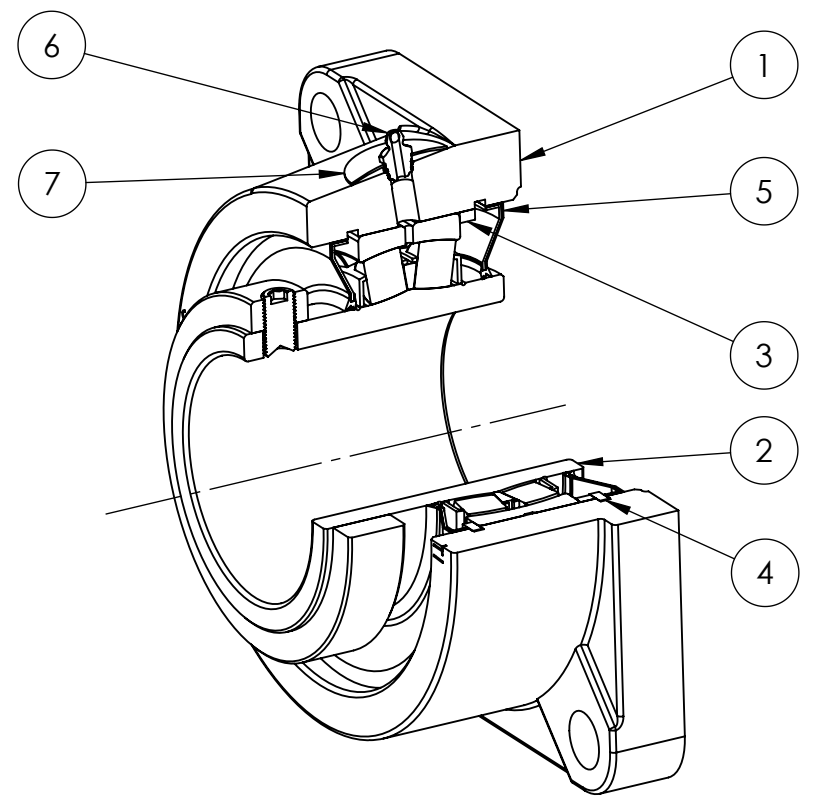
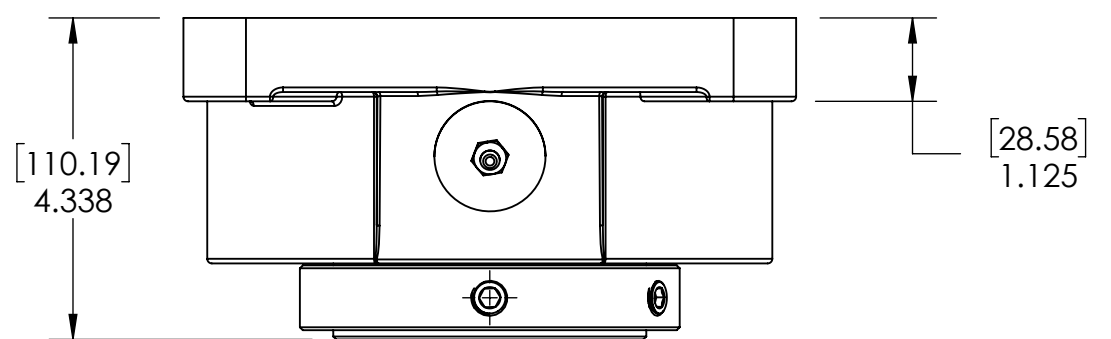


9 8 7 6 5 4 3 2 1

G F E D C B A

A B C D E F G

9 8 7 6 5 4 3 2 1



SECTION VIEW A-A

ITEM NO.	PART NUMBER	MATERIAL	COATING	QTY.
7	NP-SR2-NE	STEEL	N/A	1
6	1_8-27 ZERK	STEEL	ZINC PLATED	1
5	R3-476218	HNBR	N/A	2
4	OH160	STEEL	N/A	2
3	SR-FR160X6	STEEL	N/A	1
2	476218-307	BEARING STEEL	N/A	1
1	SR2FB4-218	DUCTILE IRON	POWDER COAT	1

SPECIFICATIONS		WEIGHT	
UNITS	IN [mm]		31.50 LBS
LOAD RATINGS	C 62950 LBS Co 83180 LBS	MATERIAL	SEE BOM
SPEED RATING	1250 RPM	COATING	SEE BOM
GREASE TYPE	NLGI #2	DRAWN	SEC 03/12/2025
GREASE FILL	40-60%	CHECKED	FP 04/11/2025
OPERATING TEMP	-22°F - 290°F	APPROVED	
SET SCREW SIZE	1/2-20UNF-7/8	THIRD ANGLE PROJECTION	
SET SCREW TORQUE	620 IN-LBS		
SET SCREW AXIAL RETENTION	900 LBS		



PROPRIETARY AND CONFIDENTIAL  
THE INFORMATION CONTAINED IN THIS DRAWING IS THE SOLE PROPERTY OF SOLVE IMAG. ANY REPRODUCTION IN PART OR AS A WHOLE WITHOUT THE WRITTEN PERMISSION OF SOLVE IMAG IS PROHIBITED.

DATE	BY	REVISION DESCRIPTION	REV
		SR2-FB4-307R3NE	1
			2
			3
			4
			5
			6
			7

SCALE 1:10  
REV -