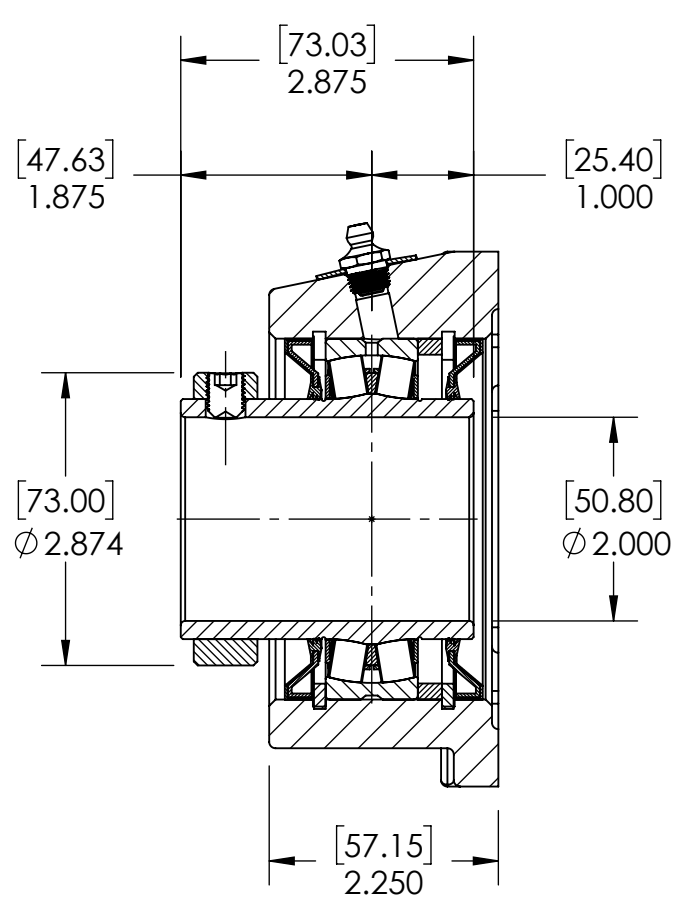
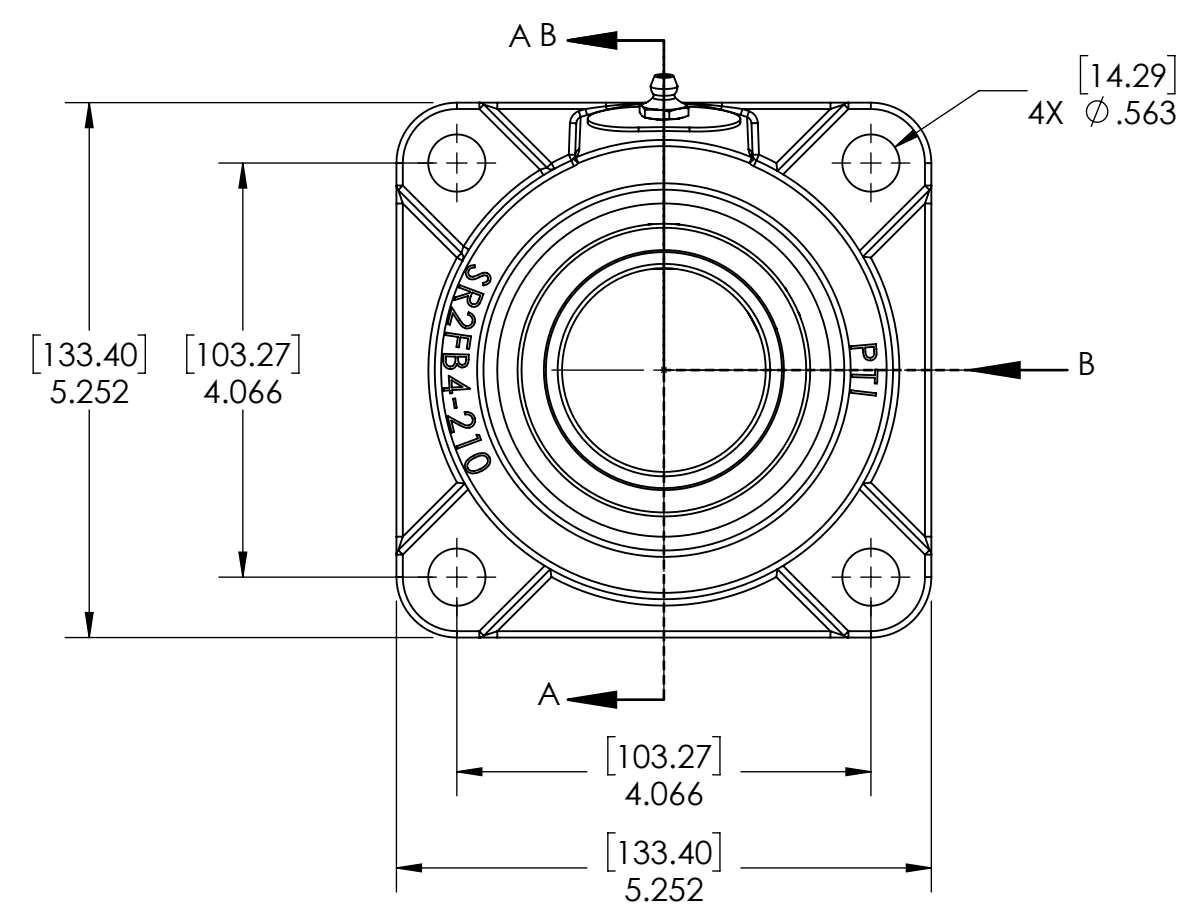
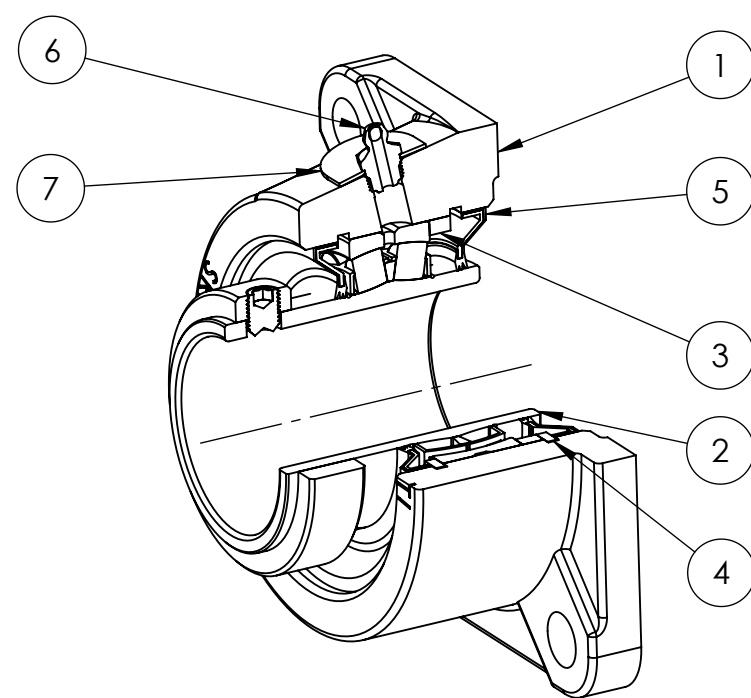
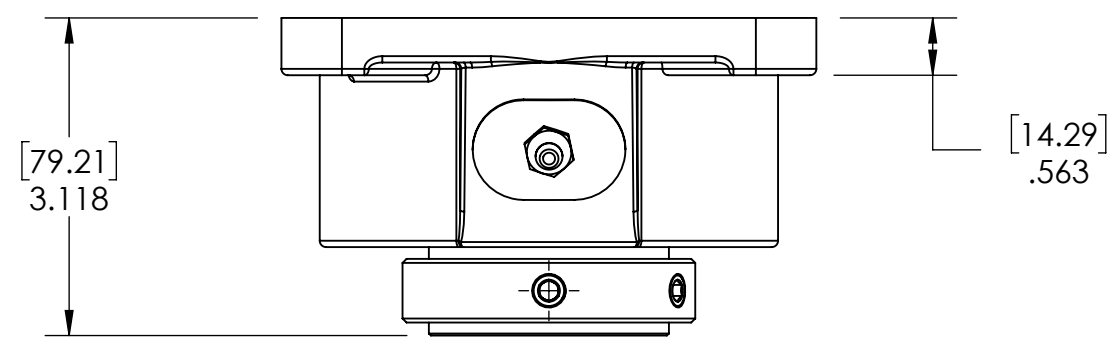


9 8 7 6 5 4 3 2 1

G
F
E
D
C
B
A

G
F
E
D
C
B
A



SECTION VIEW A-A

ITEM NO.	PART NUMBER	MATERIAL	COATING	QTY.
7	NPS-SR2-NE	STEEL	N/A	1
6	1_8-27 ZERK	STEEL	ZINC PLATED	1
5	R3-476210	HNBR	N/A	2
4	OH90	STEEL	N/A	2
3	SR-FR90X6	STEEL	N/A	1
2	476210-200	BEARING STEEL	N/A	1
1	SR2FB4-210	DUCTILE IRON	POWDER COAT	1

SPECIFICATIONS		WEIGHT	
UNITS	IN [mm]		7.67 LBS
LOAD RATINGS	C 20230 LBS Co 24730 LBS	MATERIAL	SEE BOM
SPEED RATING	2225 RPM	COATING	SEE BOM
GREASE TYPE	NLGI #2	DRAWN	SEC 03/12/2025
GREASE FILL	40-60%	CHECKED	FP 04/11/2025
OPERATING TEMP	-22°F - 290°F	APPROVED	
SET SCREW SIZE	3/8-24UNF-1/2	THIRD ANGLE PROJECTION	
SET SCREW TORQUE	250 IN-LBS		
SET SCREW AXIAL RETENTION	515 LBS		



PROPRIETARY AND CONFIDENTIAL
THE INFORMATION CONTAINED IN THIS DRAWING IS THE SOLE PROPERTY OF SOLVE IMG. ANY REPRODUCTION IN PART OR AS A WHOLE WITHOUT THE WRITTEN PERMISSION OF SOLVE IMG IS PROHIBITED.

DATE	BY	REVISION DESCRIPTION	REV
ITEM DESCRIPTION: SR2-FB4-200R3NE			SCALE 1:15
			REV -

9 8 7 6 5 4 3 2 1