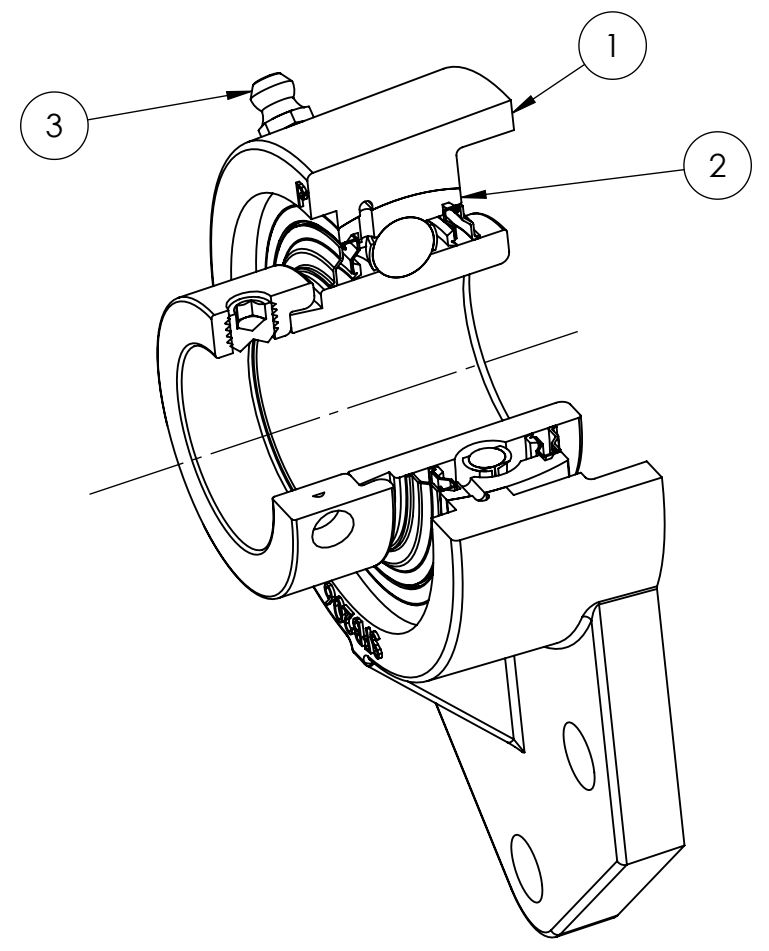
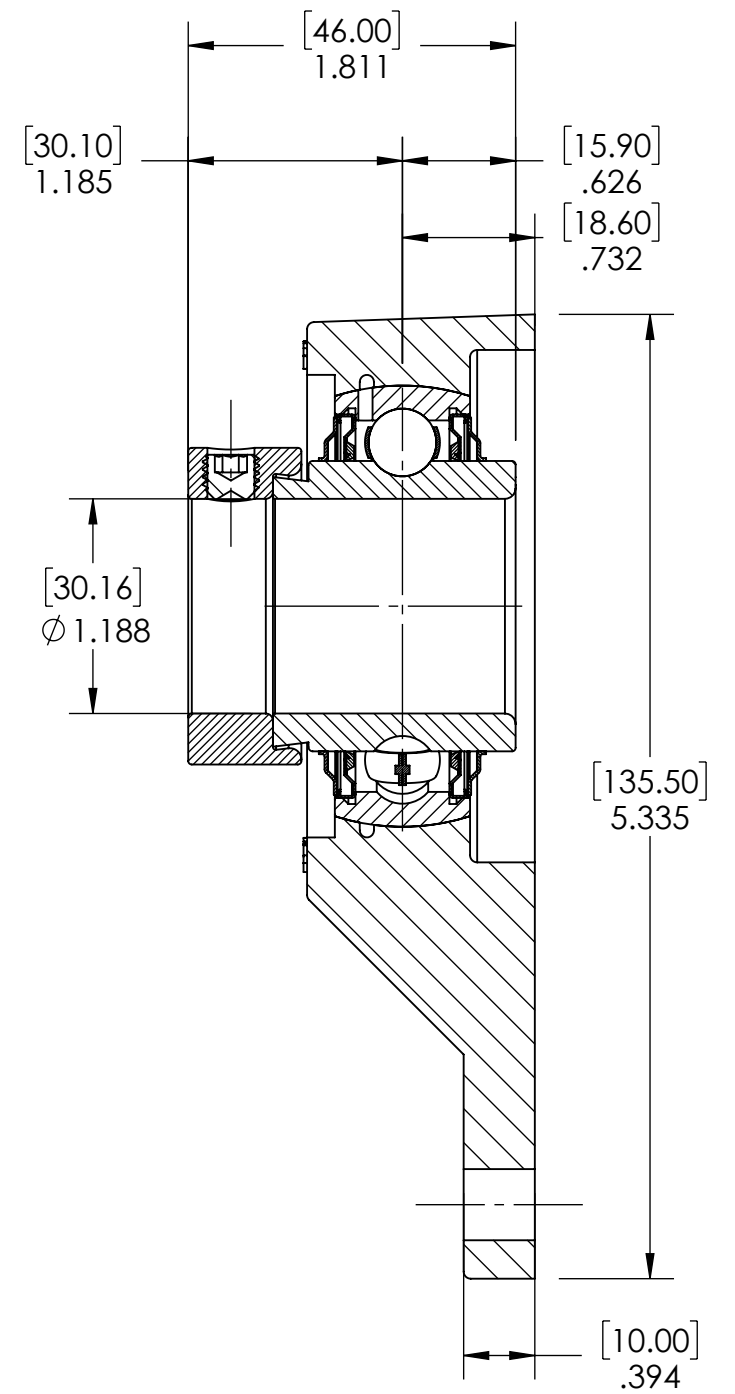
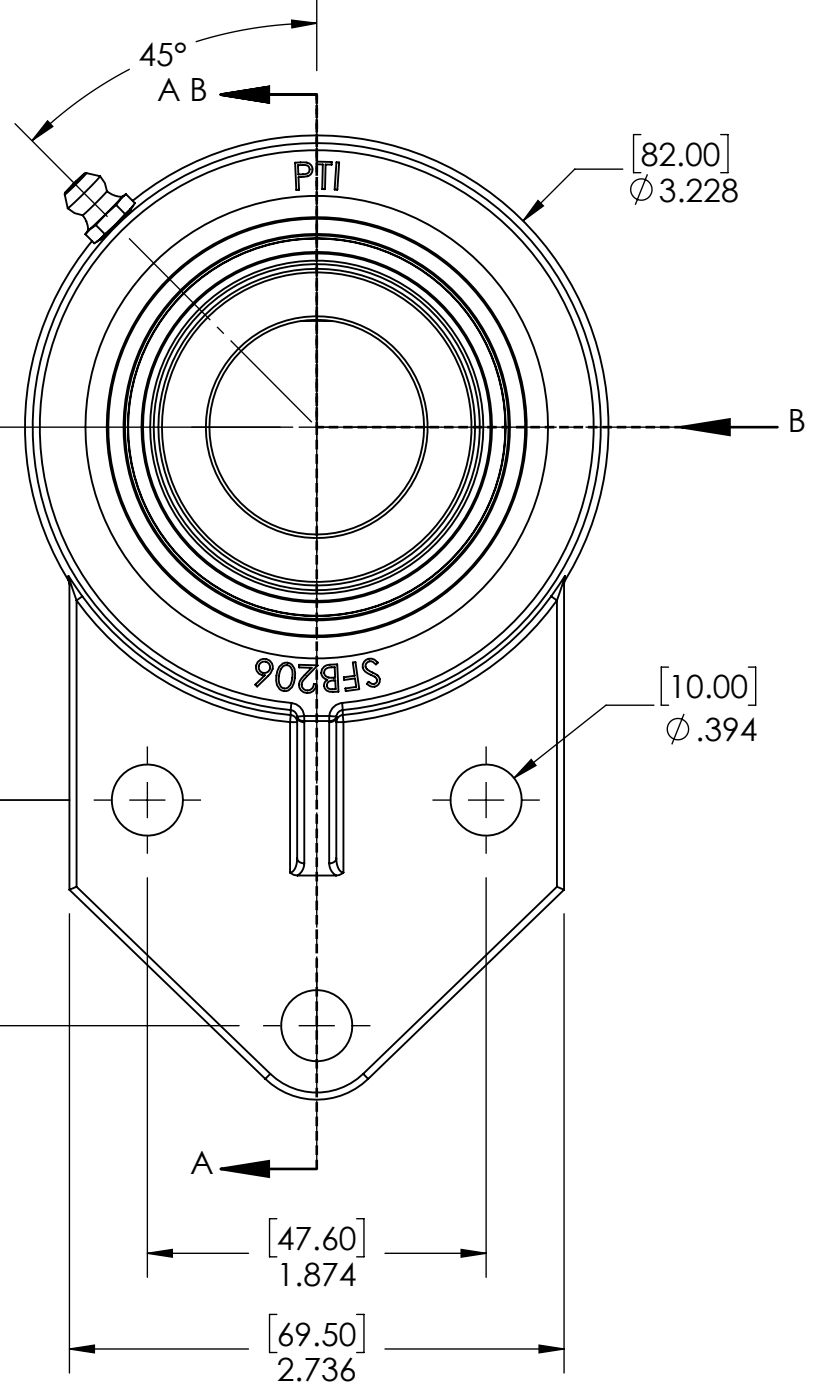
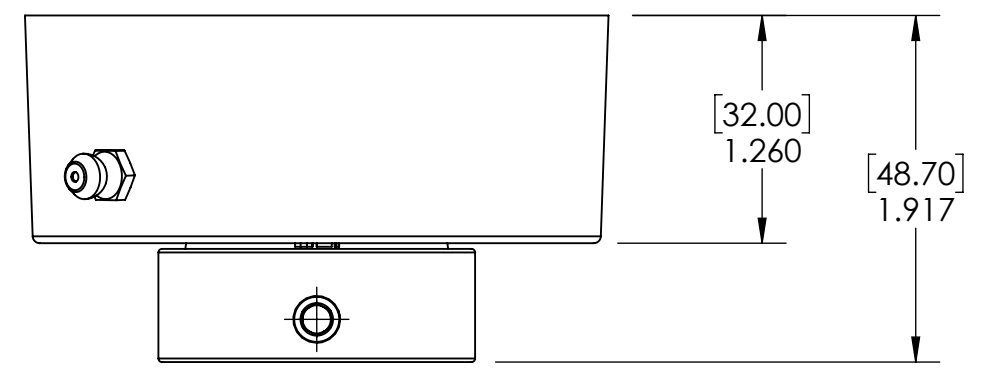


9 8 7 6 5 4 3 2 1

G F E D C B A



SECTION VIEW A-A

SPECIFICATIONS	
UNITS:	IN (mm)
LOAD RATINGS	C: 3,700 LBS Co: 2,030 LBS
SPEED RATING	5300 RPM
GREASE TYPE	FM222
GREASE FILL	40%
OPERATING TEMP	-10°F - 250°F
SEAL TYPE	K-TYPE
INTERNAL CLEARANCE	C3
TORQUE SETTING ON SET SCREWS	

SOLVE INDUSTRIAL MOTION GROUP
PTI
 DWG. NO.

WEIGHT	2.32 LBS
MATERIAL	SEE BOM
COATING	SEE BOM
DRAWN	SEC 01/07/2025
CHECKED	SEC 01/08/2025
APPROVED	

ITEM NO.	PART NUMBER	MATERIAL	COATING	QTY.
3	M6 ZERK	STAINLESS STEEL	N/A	1
2	SHC206-19	STAINLESS STEEL	N/A	1
1	SFB206	STAINLESS STEEL	N/A	1

DATE	BY	REVISION DESCRIPTION	REV
ITEM DESCRIPTION:			SCALE
SHCSFB206-19			1:10
			REV
			-

9 8 7 6 5 4 3 2 1

A B C D E F G