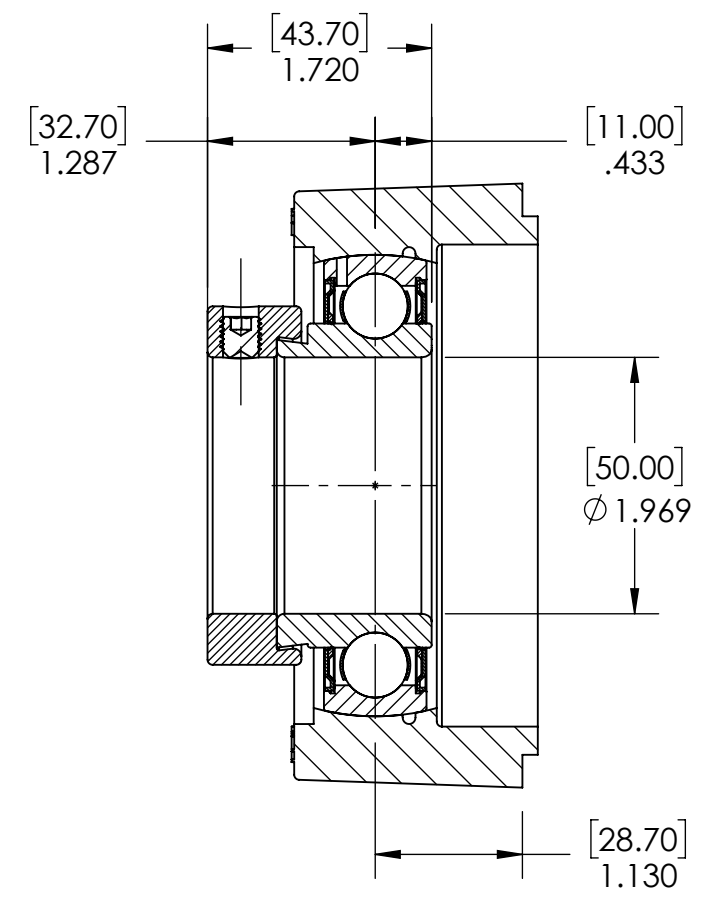
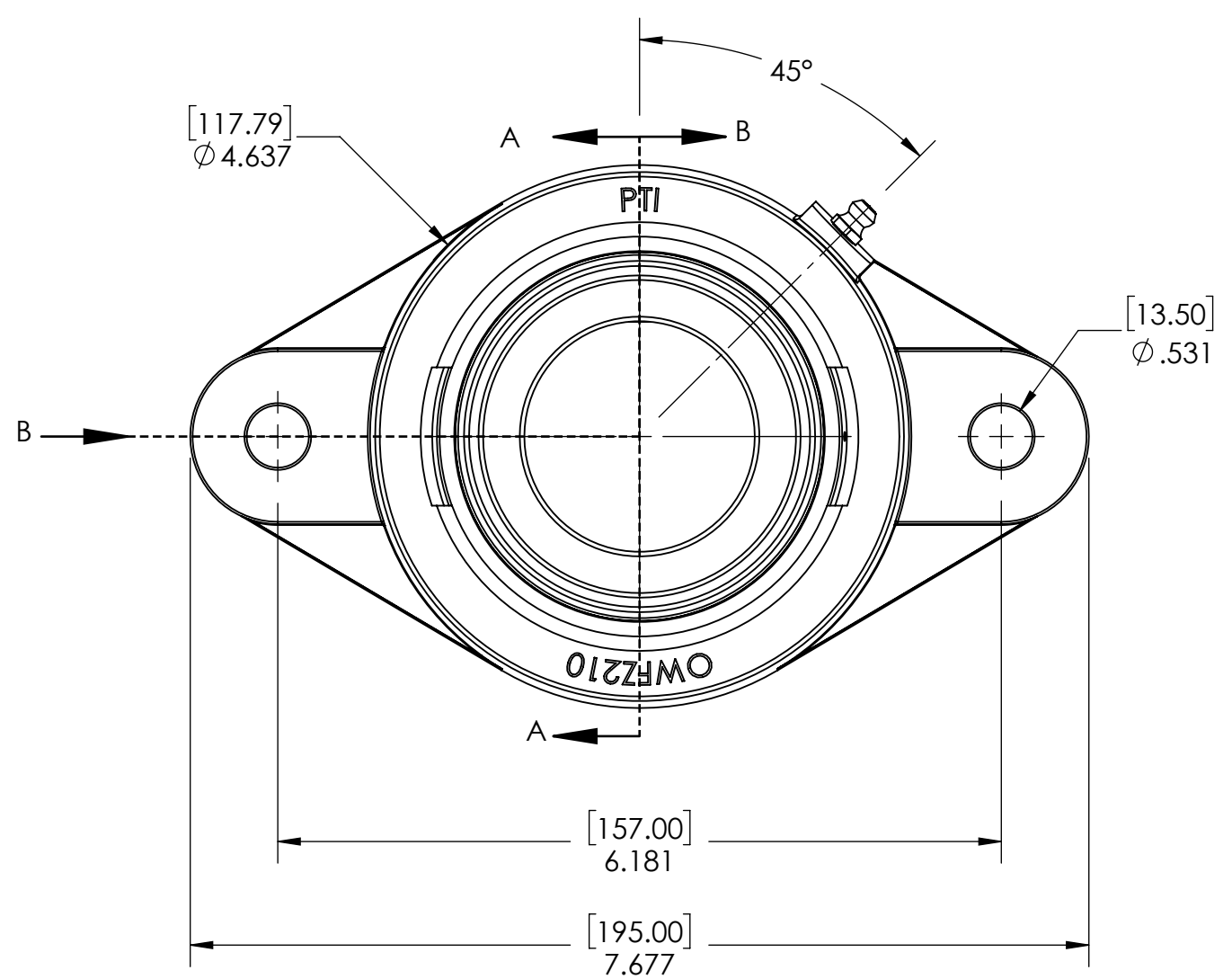
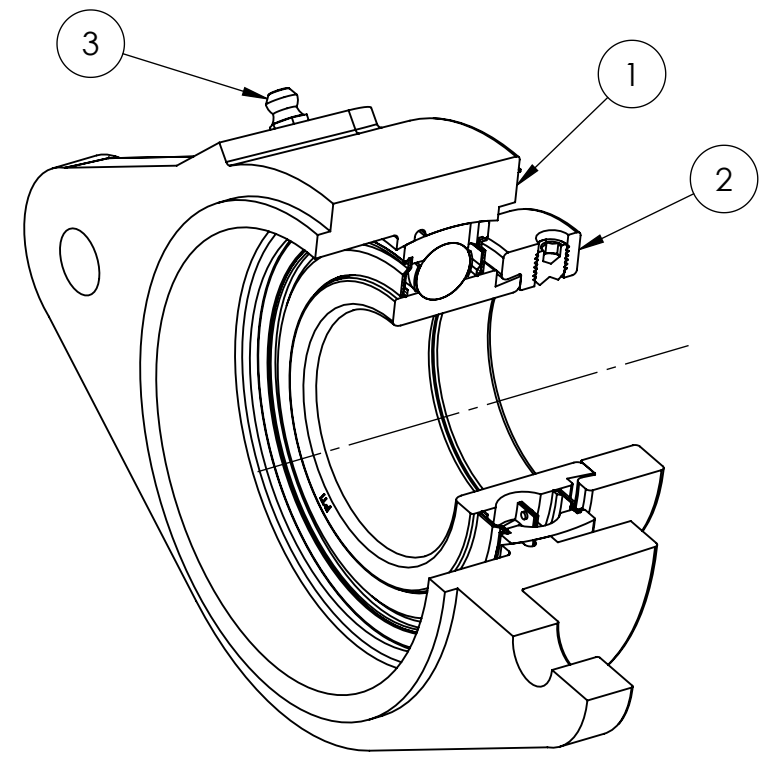
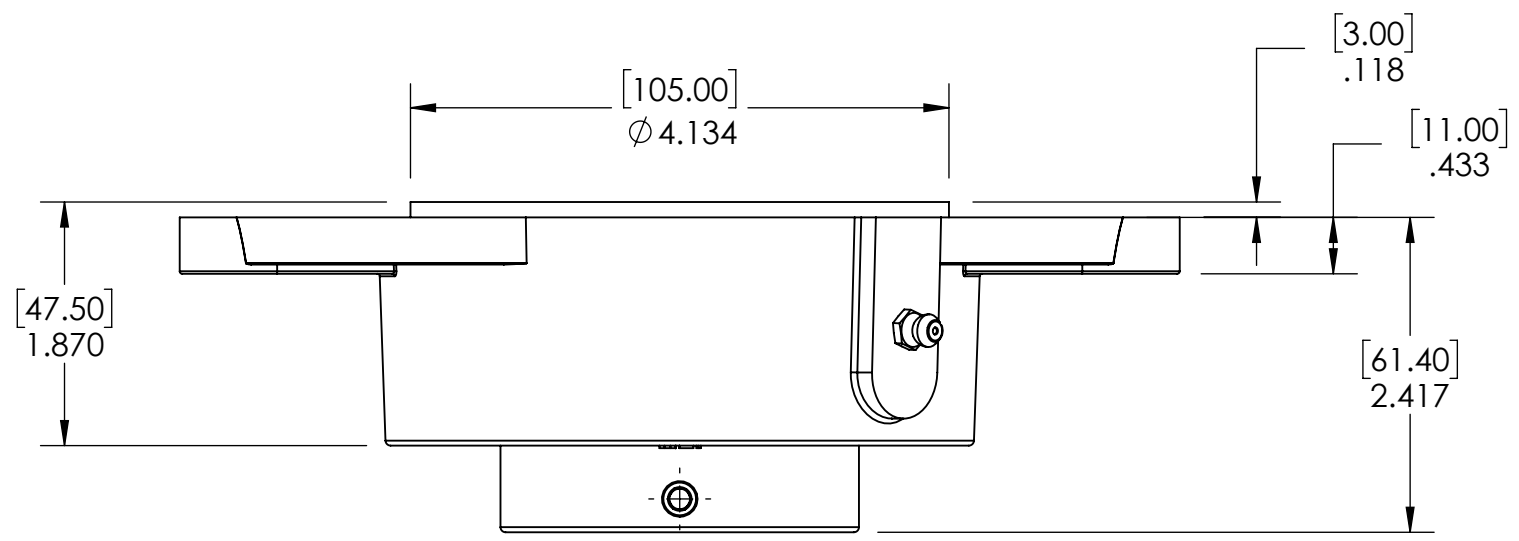


9 8 7 6 5 4 3 2 1

G
F
E
D
C
B
A

G
F
E
D
C
B
A



SECTION VIEW A-A

ITEM NO.	PART NUMBER	MATERIAL	COATING	QTY.
3	M6 ZERK	STEEL	ZINC PLATED	1
2	SA210-50MM	BEARING STEEL	N/A	1
1	OWFZ210	CAST IRON	POWDER COAT	1

SPECIFICATIONS		SOLVE		WEIGHT	5.20 LBS
UNITS:	IN (mm)	INDUSTRIAL MOTION GROUP		MATERIAL	SEE BOM
LOAD RATINGS	C: 7,900 LBS Co: 5,190 LBS			COATING	SEE BOM
SPEED RATING	3400 RPM	SIZE	B	DRAWN	SEC 01/16/2025
GREASE TYPE	NLGI #2	PTI		CHECKED	SEC 01/16/2025
GREASE FILL	40%			APPROVED	
OPERATING TEMP	10°F - 200°F	DWG. NO.		THIRD ANGLE PROJECTION	
SEAL TYPE	K-TYPE				
INTERNAL CLEARANCE	C3	PROPRIETARY AND CONFIDENTIAL		DATE	
TORQUE SETTING ON SET SCREWS					

DATE	BY	REVISION DESCRIPTION	REV
ITEM DESCRIPTION: OWFZ210-50MM			SCALE 1:8
			REV -

9 8 7 6 5 4 3 2 1