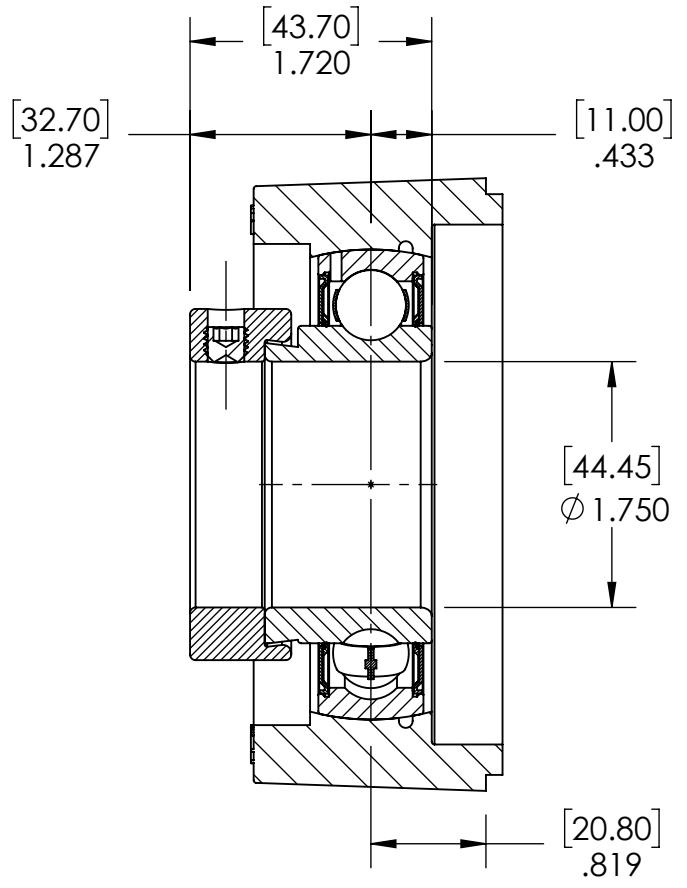
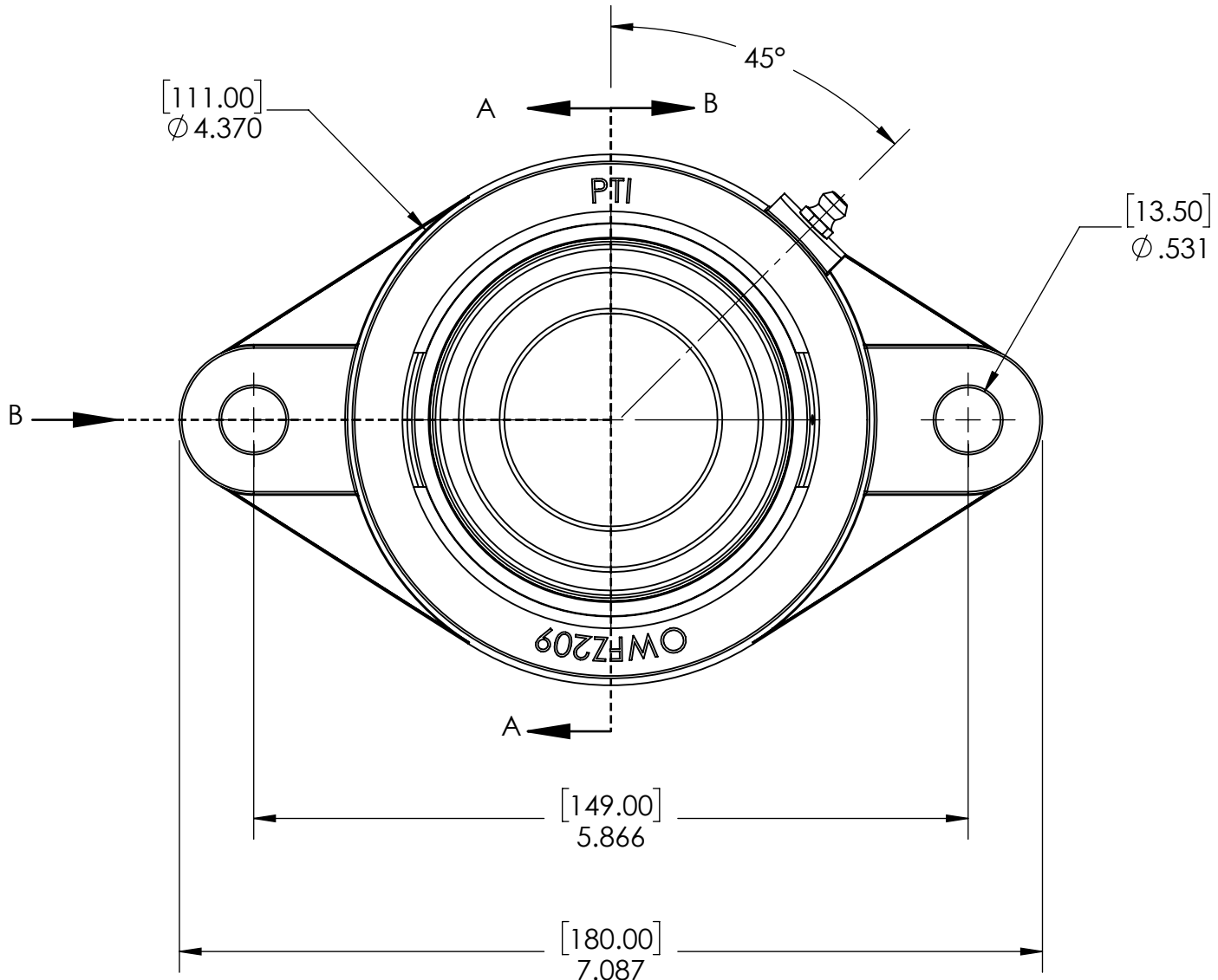
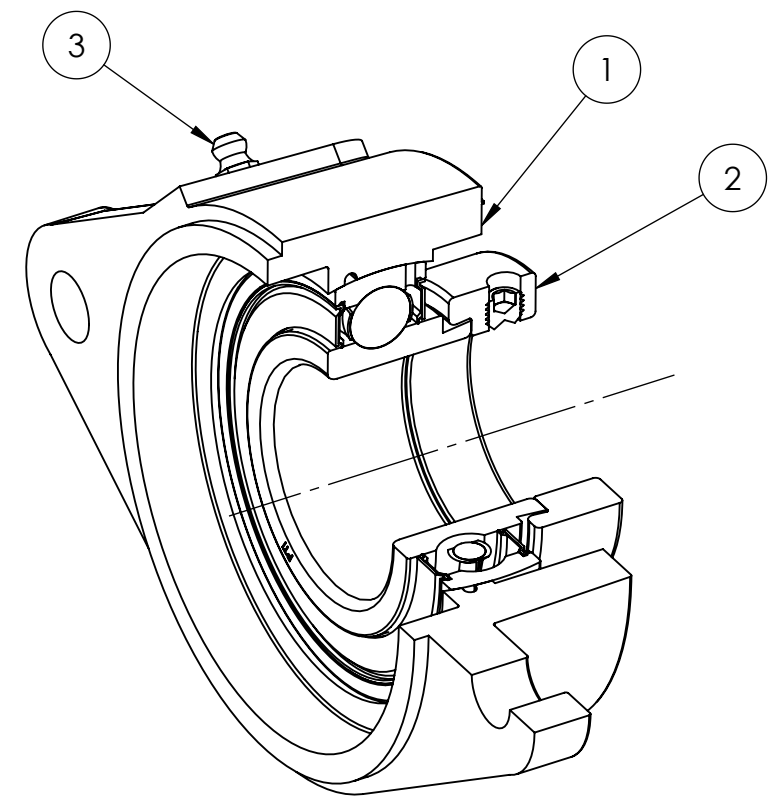
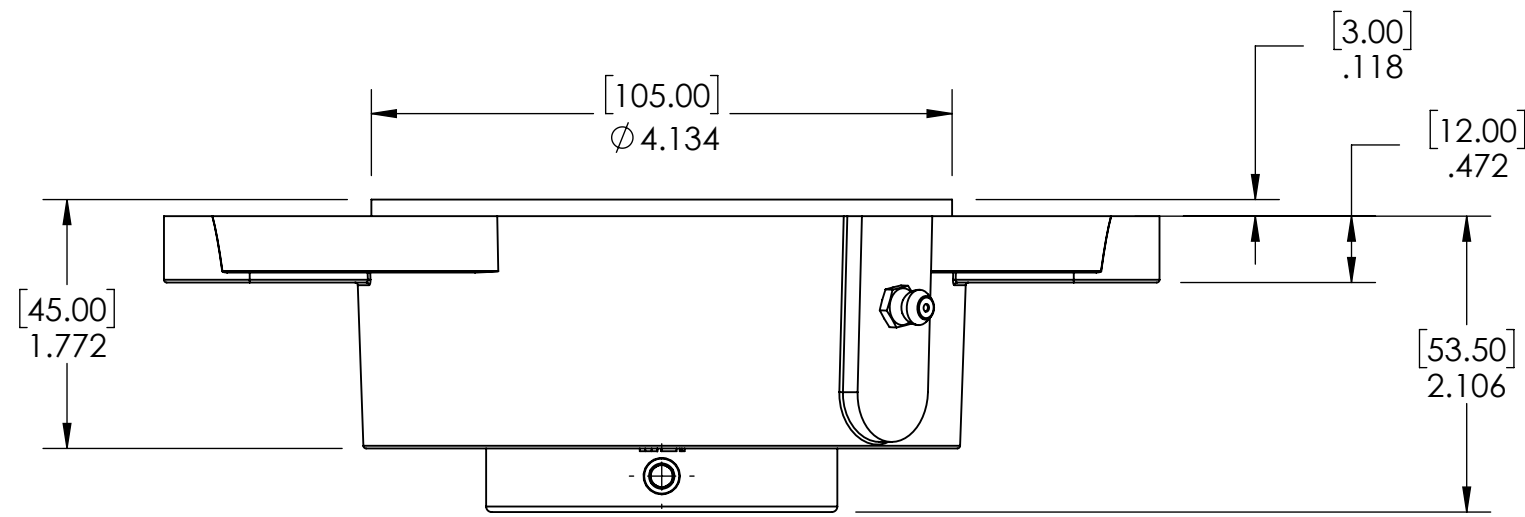


9 8 7 6 5 4 3 2 1

G  
F  
E  
D  
C  
B  
A

G  
F  
E  
D  
C  
B  
A



SECTION VIEW A-A

3	M6 ZERK	STEEL	ZINC PLATED	1
2	SA209-28	BEARING STEEL	N/A	1
1	OWFZ209	CAST IRON	POWDER COAT	1
ITEM NO.	PART NUMBER	MATERIAL	COATING	QTY.

SPECIFICATIONS		SOLVE INDUSTRIAL MOTION GROUP		WEIGHT	4.33 LBS
UNITS:	IN (mm)	SIZE	B	MATERIAL	SEE BOM
LOAD RATINGS	C: 7,390 LBS Co: 4,610 LBS	DWG. NO.		COATING	SEE BOM
SPEED RATING	3700 RPM	APPROVED		DRAWN	SEC 01/16/2025
GREASE TYPE	NLGI #2	CHECKED	SEC 01/16/2025	DATE	BY
GREASE FILL	40%	THIRD ANGLE PROJECTION		REVISION DESCRIPTION	
OPERATING TEMP	10°F - 200°F			ITEM DESCRIPTION:	
SEAL TYPE	K-TYPE			OWFZ209-28	
INTERNAL CLEARANCE	C3			REV	1:8
TORQUE SETTING ON SET SCREWS				REV	-

PROPRIETARY AND CONFIDENTIAL  
THE INFORMATION CONTAINED IN THIS DRAWING IS THE SOLE PROPERTY OF SOLVE IMG. ANY REPRODUCTION IN PART OR AS A WHOLE WITHOUT THE WRITTEN PERMISSION OF SOLVE IMG IS PROHIBITED.

9 8 7 6 5 4 3 2 1