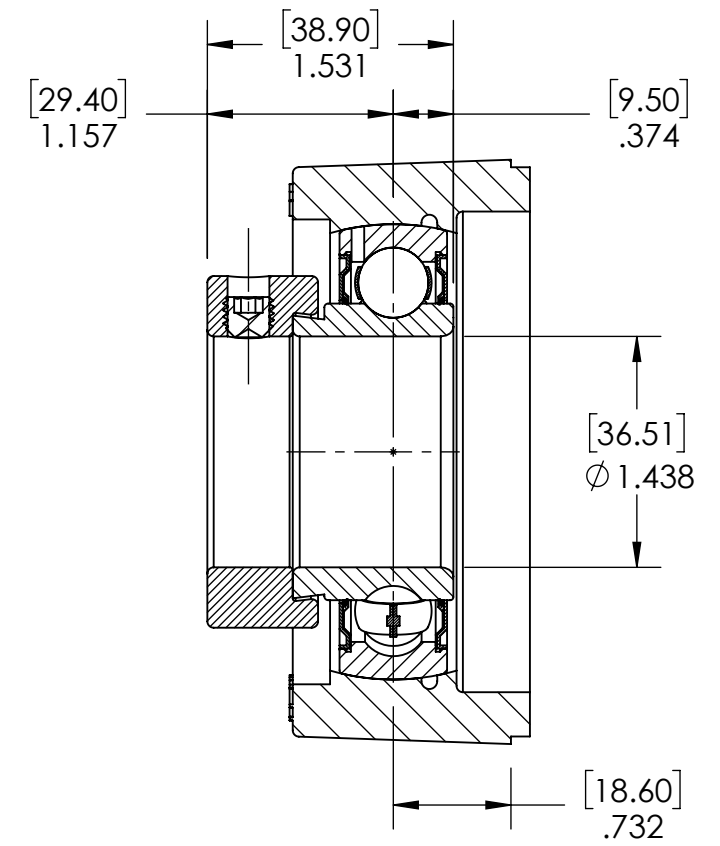
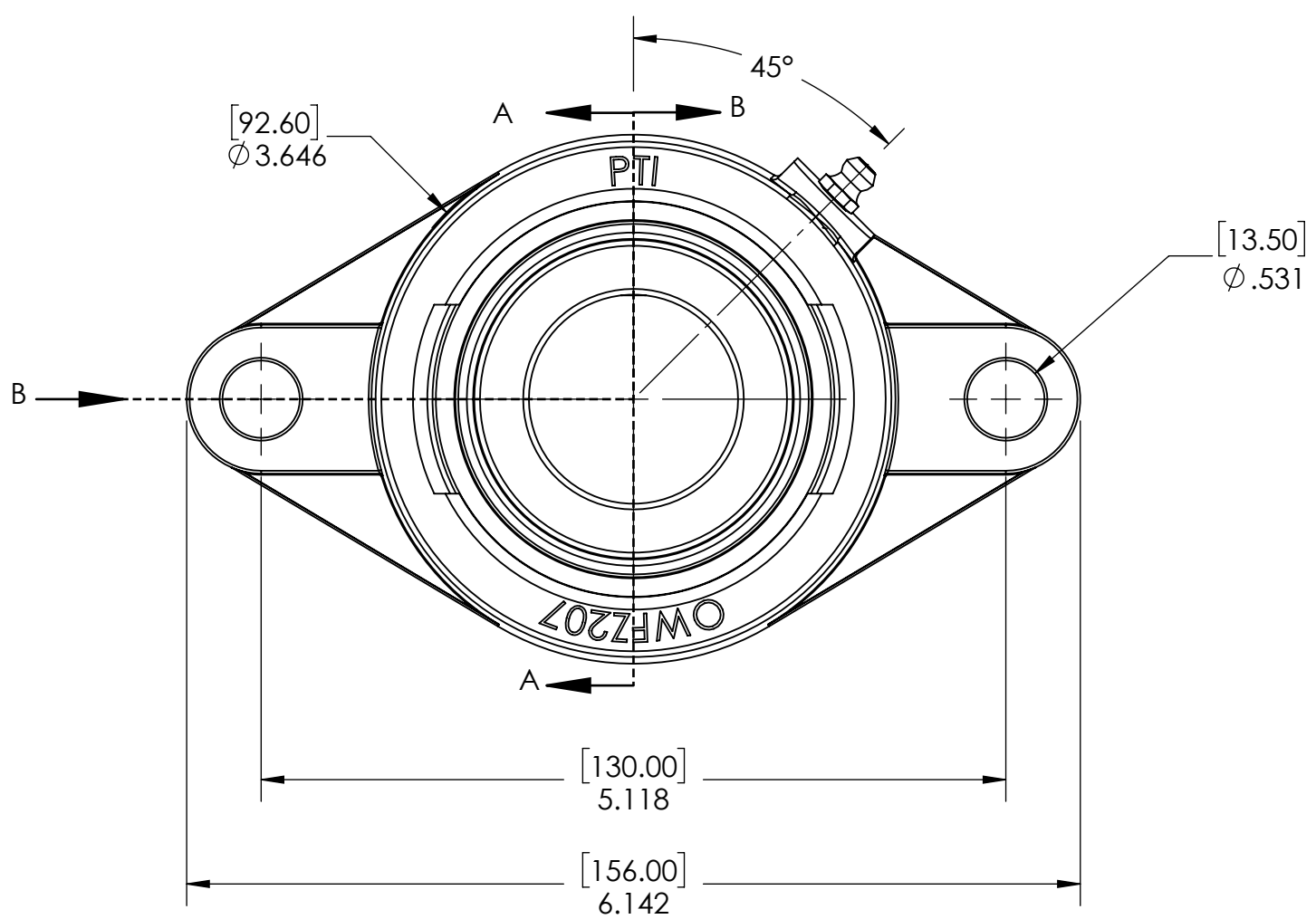
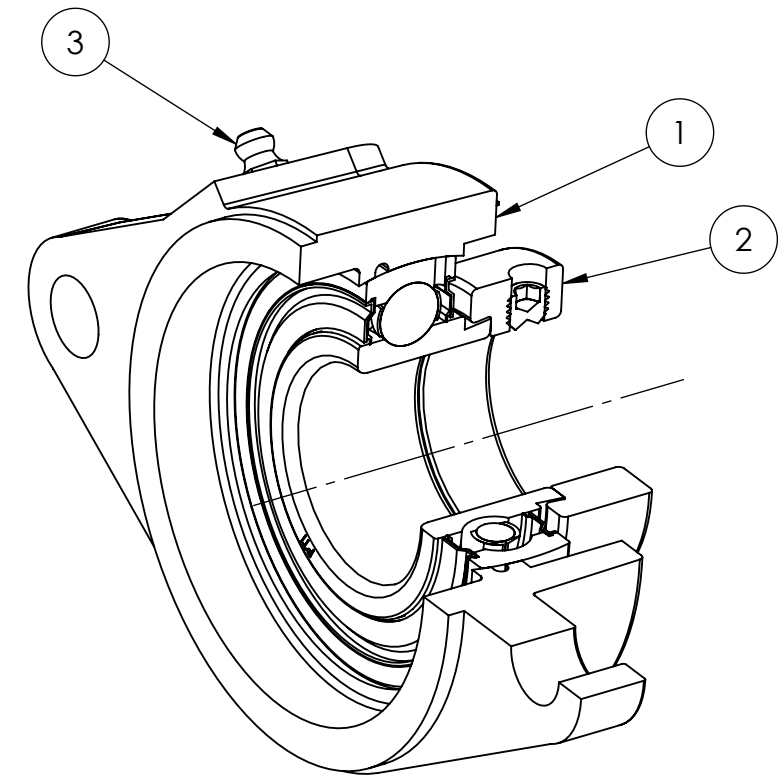
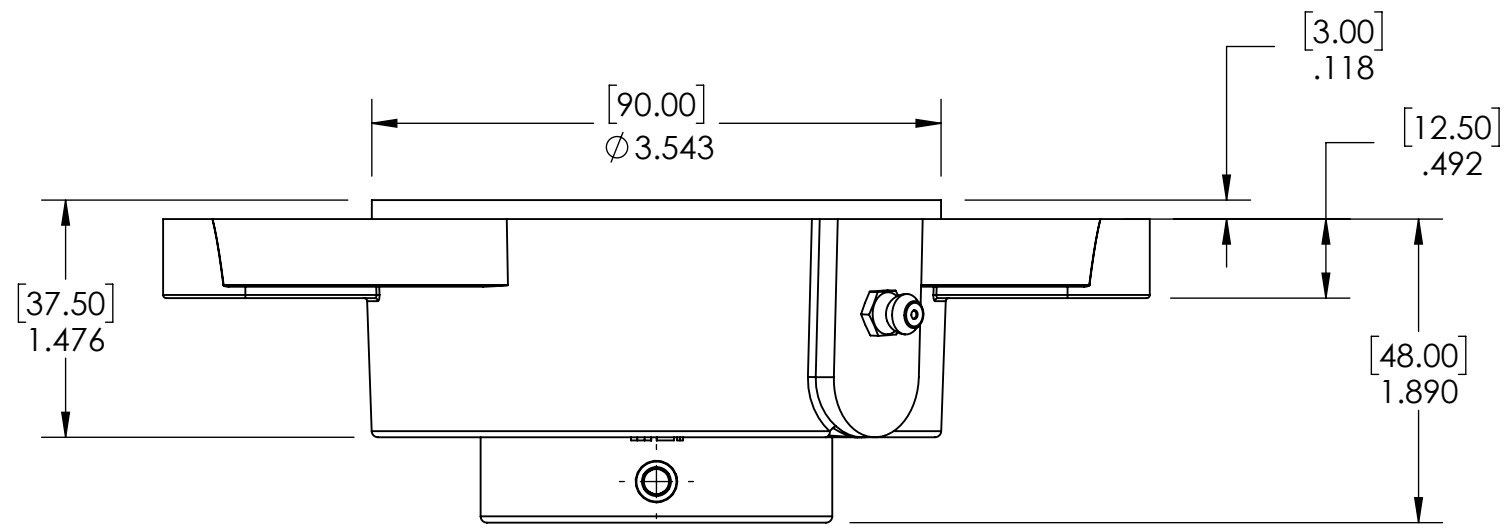


9 8 7 6 5 4 3 2 1

G
F
E
D
C
B
A

G
F
E
D
C
B
A



SECTION VIEW A-A

3	M6 ZERK	STEEL	ZINC PLATED	1
2	SA207-23	BEARING STEEL	N/A	1
1	OWFZ207	CAST IRON	POWDER COAT	1
ITEM NO.	PART NUMBER	MATERIAL	COATING	QTY.

SPECIFICATIONS		SOLVE INDUSTRIAL MOTION GROUP		WEIGHT	2.80 LBS
UNITS:	IN (mm)	SIZE	B	MATERIAL	SEE BOM
LOAD RATINGS	C: 5,780 LBS Co: 3,440 LBS	CHECKED	SEC	COATING	SEE BOM
SPEED RATING	4500 RPM	APPROVED	SEC	DRAWN	SEC 01/16/2025
GREASE TYPE	NLGI #2	DATE	BY	CHECKED	SEC 01/16/2025
GREASE FILL	40%	REVISION DESCRIPTION		APPROVED	
OPERATING TEMP	10°F - 200°F	ITEM DESCRIPTION:		THIRD ANGLE PROJECTION	
SEAL TYPE	K-TYPE	OWFZ207-23		DWG. NO.	
INTERNAL CLEARANCE	C3	REV		PROPRIETARY AND CONFIDENTIAL	
TORQUE SETTING ON SET SCREWS		SCALE		THE INFORMATION CONTAINED IN THIS DRAWING IS THE SOLE PROPERTY OF SOLVE IMG. ANY REPRODUCTION IN PART OR AS A WHOLE WITHOUT THE WRITTEN PERMISSION OF SOLVE IMG IS PROHIBITED.	

DATE	BY	REVISION DESCRIPTION	REV
			SCALE
			1:10
			REV
			-

9 8 7 6 5 4 3 2 1