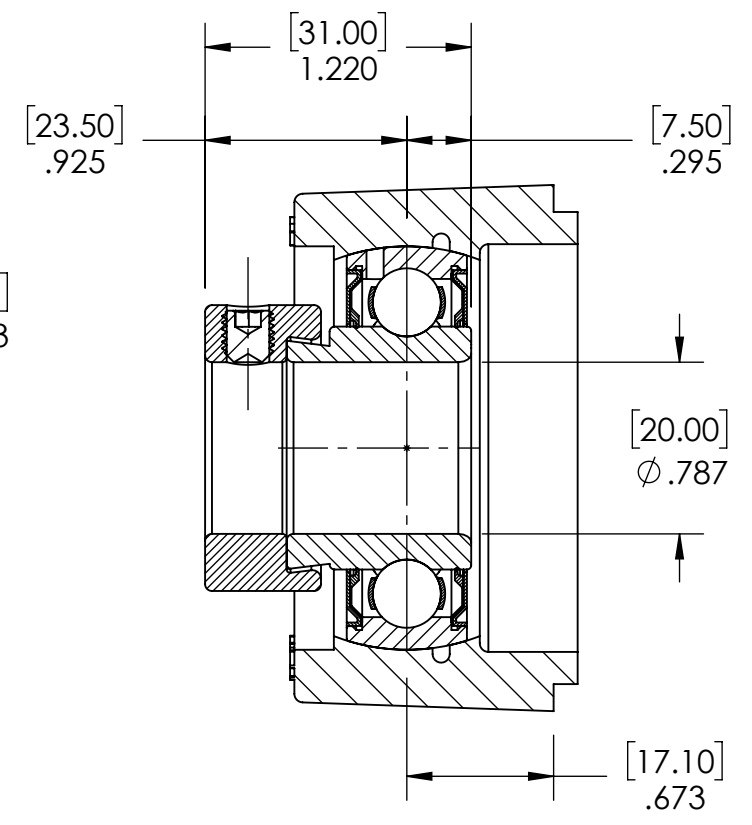
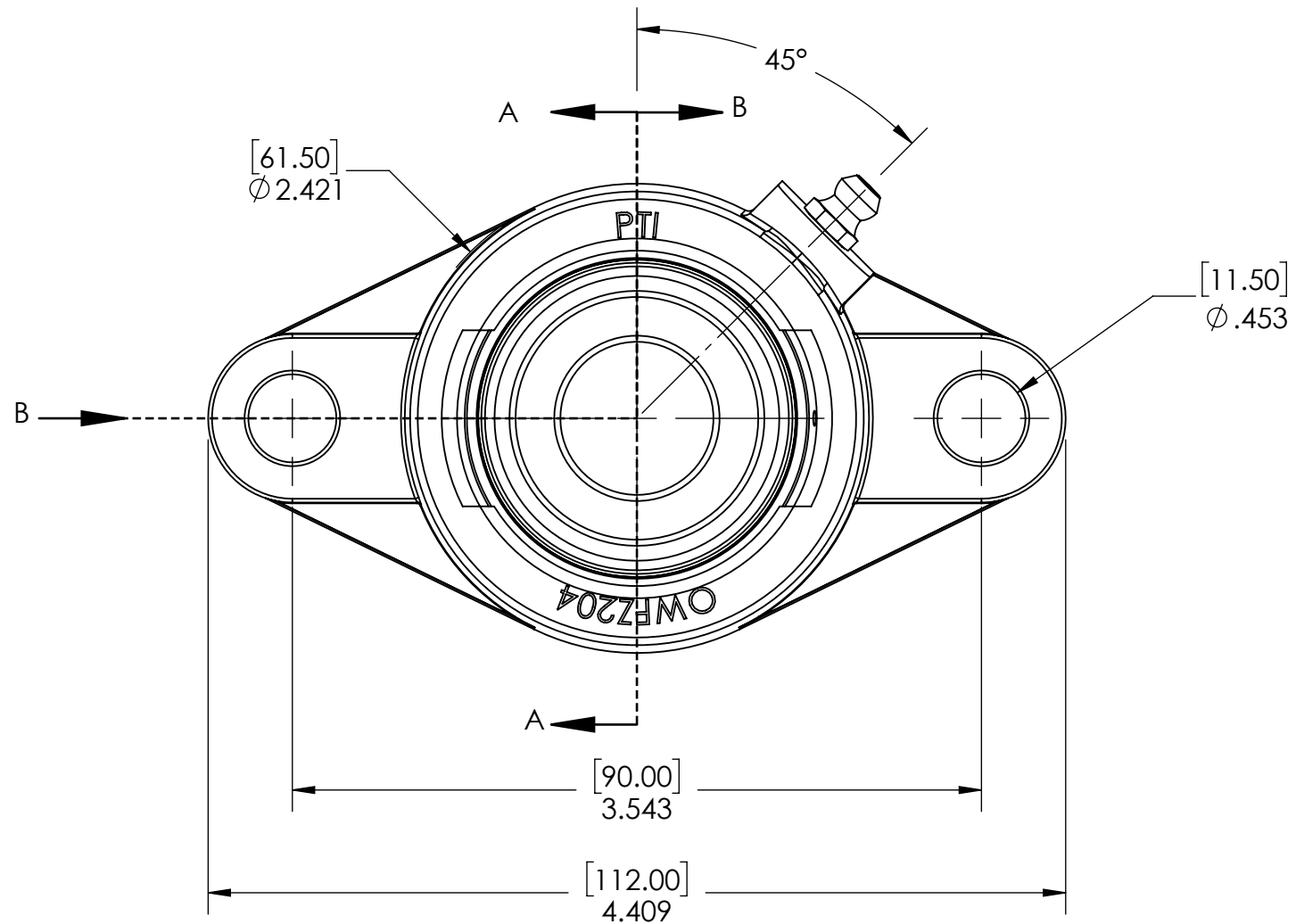
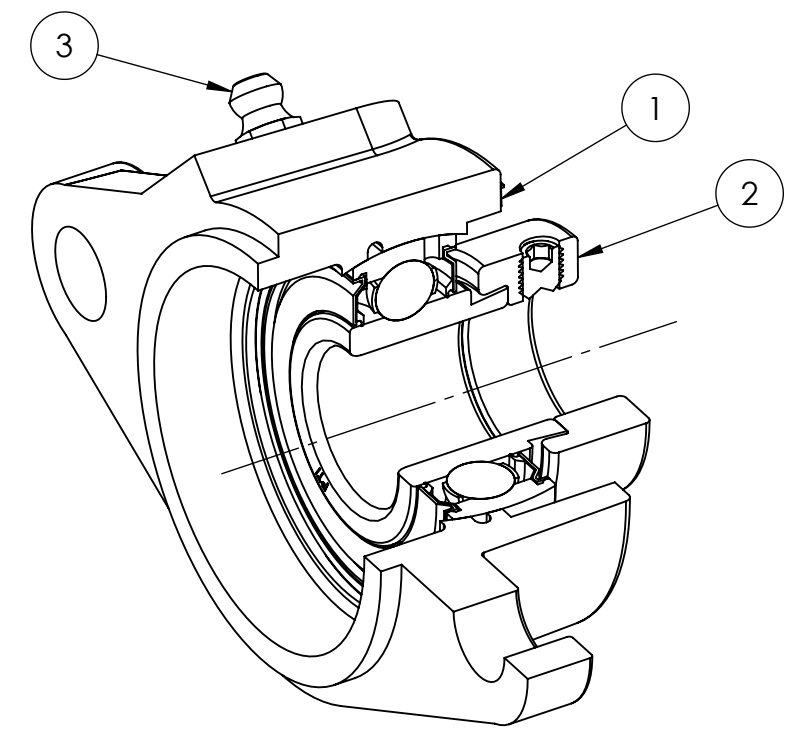
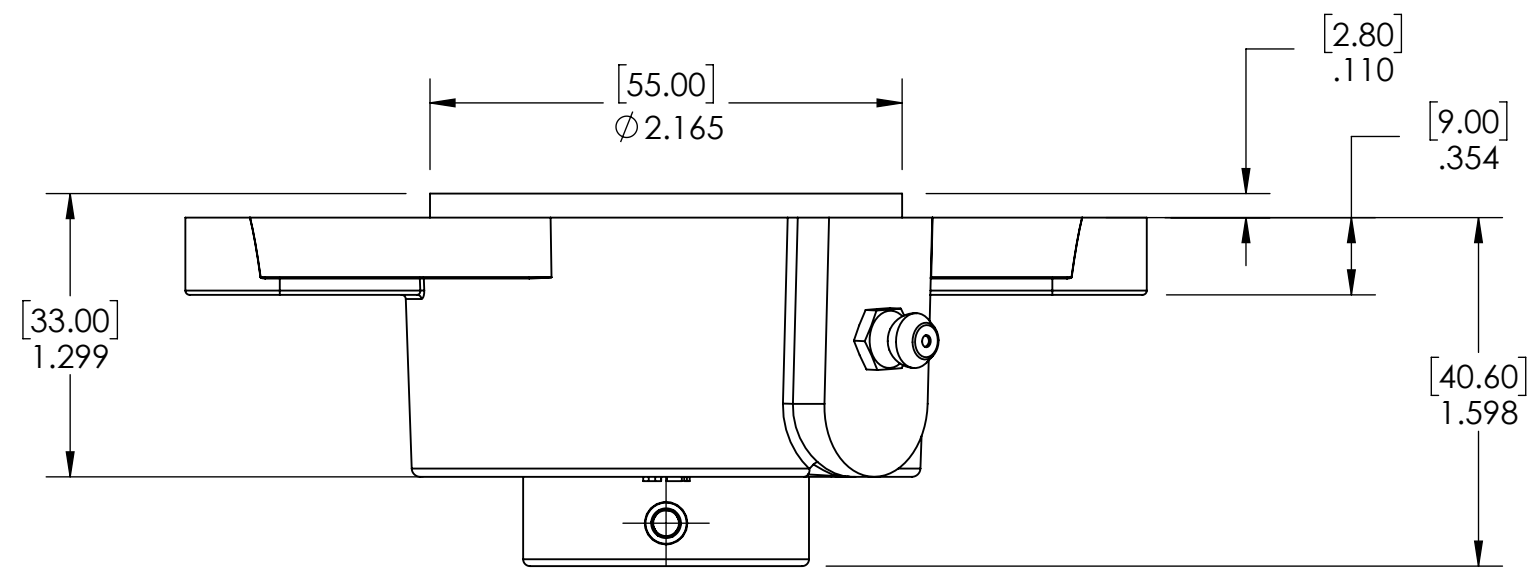


9 8 7 6 5 4 3 2 1

G
F
E
D
C
B
A

G
F
E
D
C
B
A



SECTION VIEW A-A

3	M6 ZERK	STEEL	ZINC PLATED	1
2	SA204-20MM	BEARING STEEL	N/A	1
1	OWFZ204	CAST IRON	POWDER COAT	1
ITEM NO.	PART NUMBER	MATERIAL	COATING	QTY.

SPECIFICATIONS		SOLVE INDUSTRIAL MOTION GROUP		WEIGHT	1.10 LBS
UNITS:	IN (mm)	SIZE	B	MATERIAL	SEE BOM
LOAD RATINGS	C: 2,900 LBS Co: 2,500 LBS	DWG. NO.		COATING	SEE BOM
SPEED RATING	7450 RPM			DRAWN	SEC 01/16/2025
GREASE TYPE	NLGI #2			CHECKED	SEC 01/16/2025
GREASE FILL	40%			APPROVED	
OPERATING TEMP	10°F - 200°F			THIRD ANGLE PROJECTION	
SEAL TYPE	K-TYPE			DATE BY REVISION DESCRIPTION	
INTERNAL CLEARANCE	C3			ITEM DESCRIPTION: OWFZ204-20MM	
TORQUE SETTING ON SET SCREWS				REV	SCALE 1:13
					REV -

PROPRIETARY AND CONFIDENTIAL
THE INFORMATION CONTAINED IN THIS DRAWING IS THE SOLE PROPERTY OF SOLVE IMG. ANY REPRODUCTION IN PART OR AS A WHOLE WITHOUT THE WRITTEN PERMISSION OF SOLVE IMG IS PROHIBITED.

9 8 7 6 5 4 3 2 1