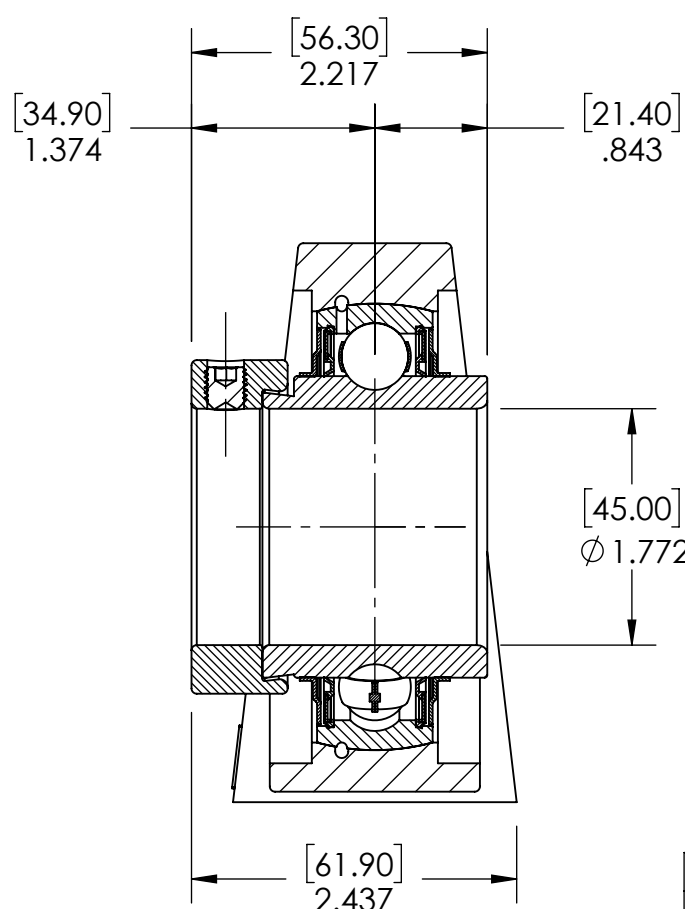
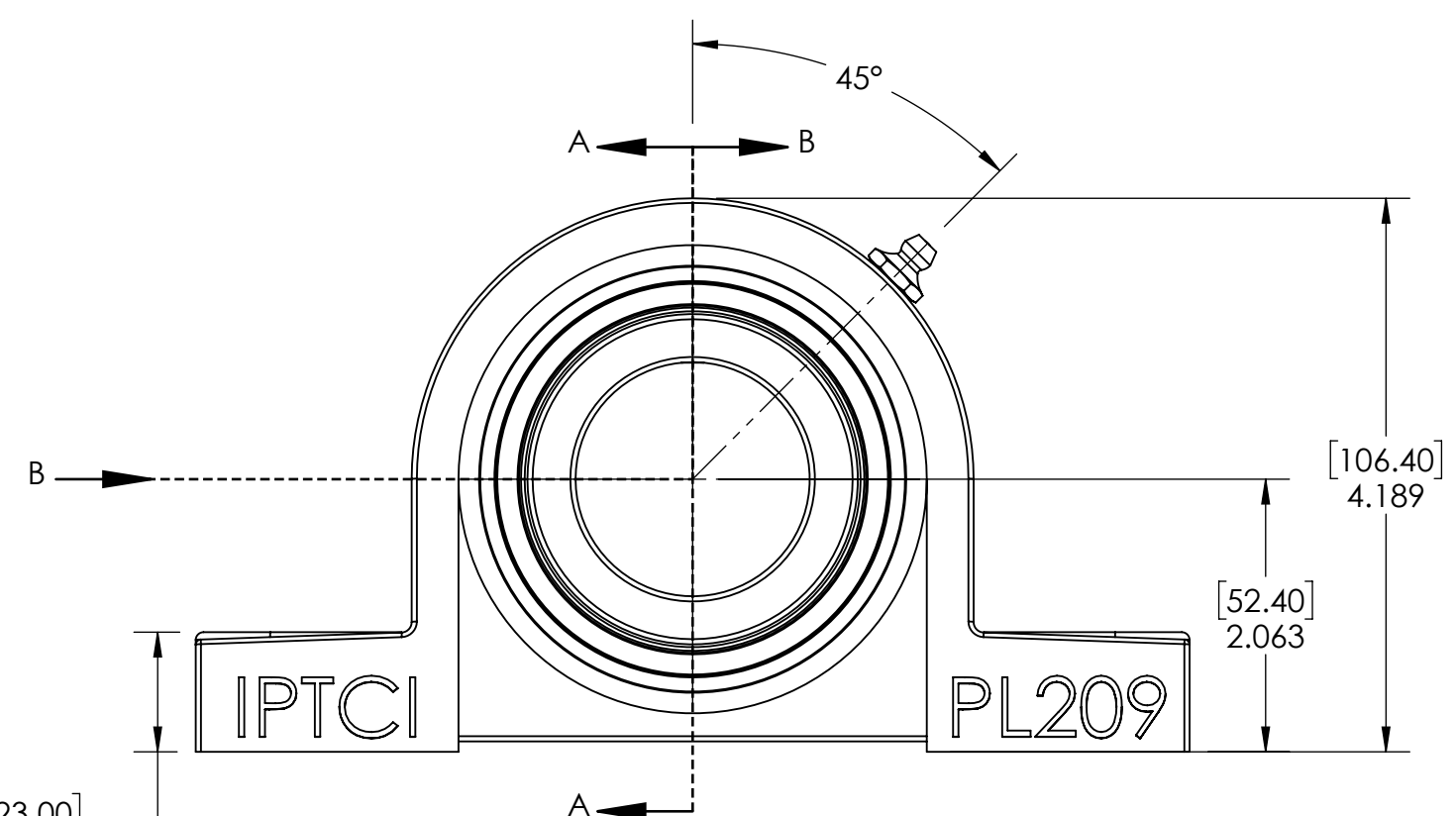
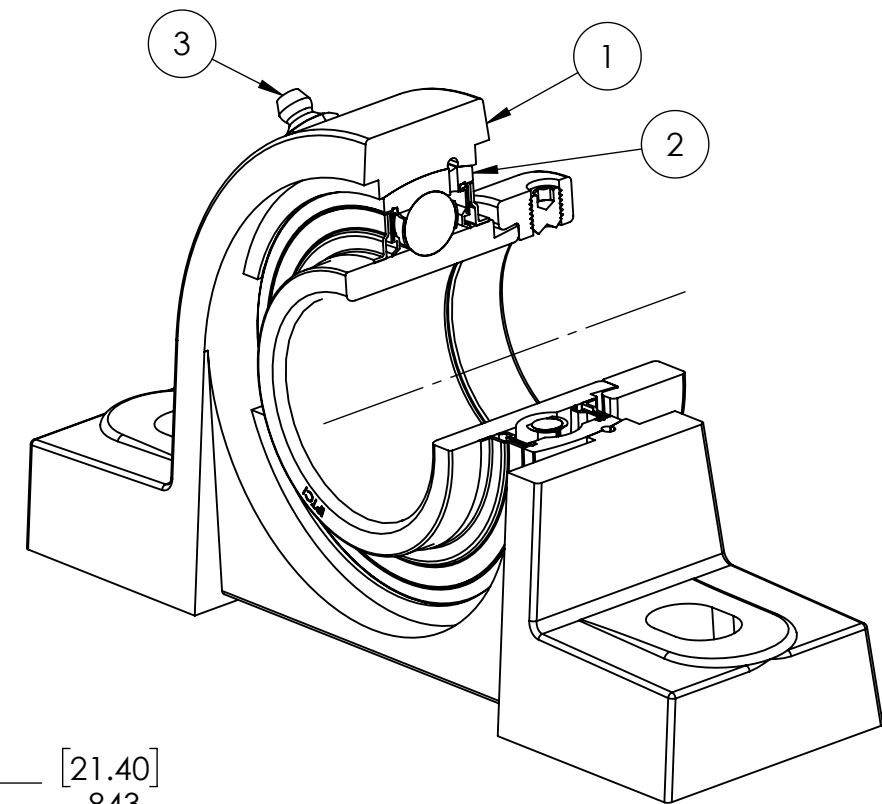
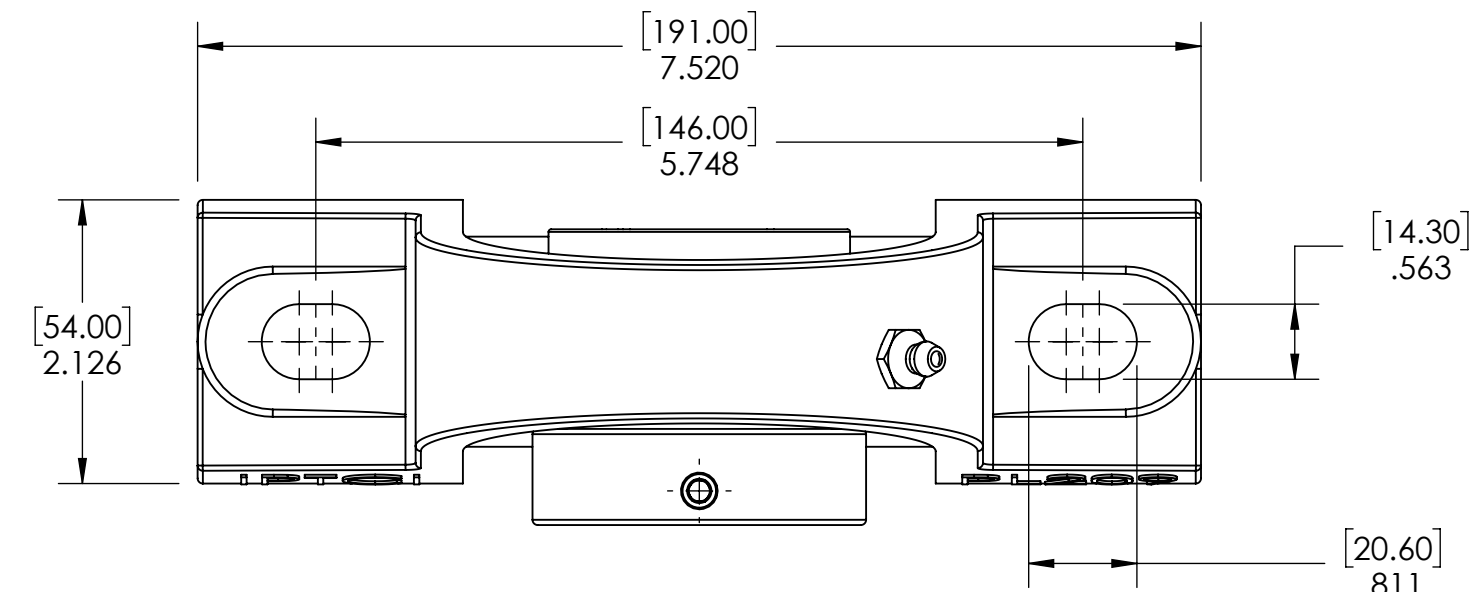


9 8 7 6 5 4 3 2 1

G F E D C B A



SECTION VIEW A-A

ITEM NO.	PART NUMBER	MATERIAL	COATING	QTY.
3	1/8-27	STEEL	ZINC PLATED	1
2	NA209-45MM	BEARING STEEL	N/A	1
1	PL209	CAST IRON	POWDER COAT	1

SPECIFICATIONS		WEIGHT	
UNITS:	IN (mm)		5.68
LOAD RATINGS	C: 7,110 LBS Co: 4,460 LBS	MATERIAL	SEE NOTES
SPEED RATING	3400 RPM	COATING	SEE NOTES
GREASE TYPE	NLGI #2	DRAWN	SEC 12/16/2024
GREASE FILL	45%	CHECKED	SEC 04/14/2025
OPERATING TEMP	32°F - 200°F	APPROVED	
SEAL TYPE	B-TYPE	THIRD ANGLE PROJECTION	
INTERNAL CLEARANCE	C3		
TORQUE SETTING ON SET SCREWS			

SOLVE
INDUSTRIAL MOTION GROUP

SIZE **B**

IPTCI
BEARINGS

DWG. NO.

PROPRIETARY AND CONFIDENTIAL
THE INFORMATION CONTAINED IN THIS DRAWING IS THE SOLE PROPERTY OF SOLVE IMG. ANY REPRODUCTION IN PART OR AS A WHOLE WITHOUT THE WRITTEN PERMISSION OF SOLVE IMG IS PROHIBITED.

DATE	BY	REVISION DESCRIPTION	REV
		ITEM DESCRIPTION:	SCALE
		NAPL209-45MM	1:8
			REV
			-

9 8 7 6 5 4 3 2 1

A B C D E F G