

9 8 7 6 5 4 3 2 1

G G

F F

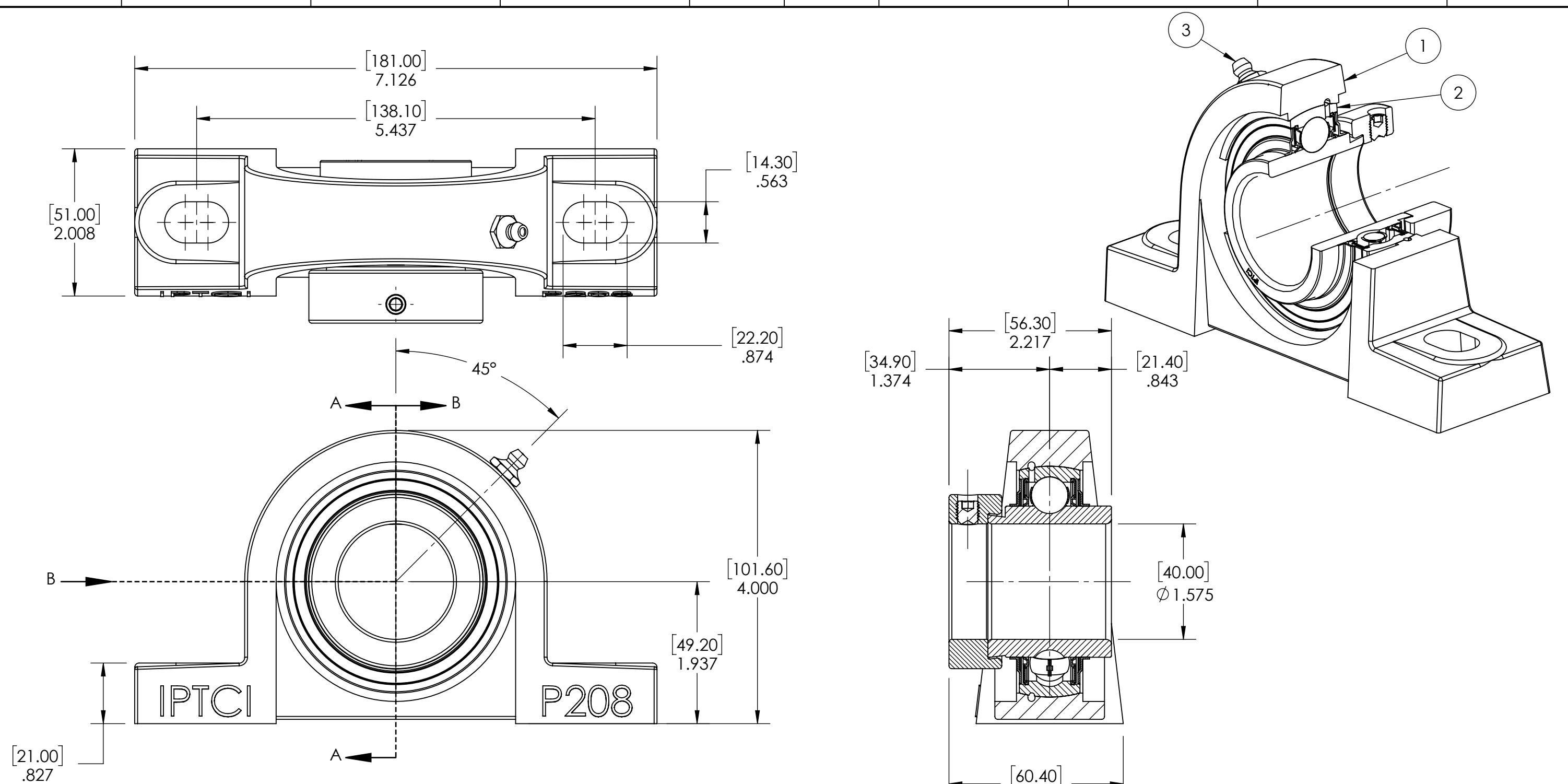
E E

D D

C C

B B

A A



SECTION VIEW A-A

| 3 | 1/8-27 | STEEL | ZINC PLATED | 1 |
|----------|-------------|---------------|-------------|------|
| 2 | NA208-40MM | BEARING STEEL | N/A | 1 |
| 1 | P208 | CAST IRON | POWDER COAT | 1 |
| ITEM NO. | PART NUMBER | MATERIAL | COATING | QTY. |

| SPECIFICATIONS | | WEIGHT | |
|------------------------------|-------------------------------|------------------------|----------------|
| UNITS: | IN (mm) | | 5.16 |
| LOAD RATINGS | C: 6.375 LBS Co: 3.960 LBS | MATERIAL | SEE NOTES |
| SPEED RATING | 3750 RPM | COATING | SEE NOTES |
| GREASE TYPE | NLGI #2 | DRAWN | SEC 12/16/2024 |
| GREASE FILL | 45% | CHECKED | SEC 04/14/2025 |
| OPERATING TEMP | 32°F - 200°F | APPROVED | |
| SEAL TYPE | B-TYPE | THIRD ANGLE PROJECTION | |
| INTERNAL CLEARANCE | C3 | | |
| TORQUE SETTING ON SET SCREWS | | | |



PROPRIETARY AND CONFIDENTIAL
THE INFORMATION CONTAINED IN THIS DRAWING IS THE SOLE PROPERTY OF SOLVE IMG. ANY REPRODUCTION IN PART OR AS A WHOLE WITHOUT THE WRITTEN PERMISSION OF SOLVE IMG IS PROHIBITED.

| | | | |
|------|----|----------------------|-------|
| DATE | BY | REVISION DESCRIPTION | REV |
| | | ITEM DESCRIPTION: | SCALE |
| | | NAP208-40MM | 1:8 |
| | | | REV |
| | | | - |

9 8 7 6 5 4 3 2 1