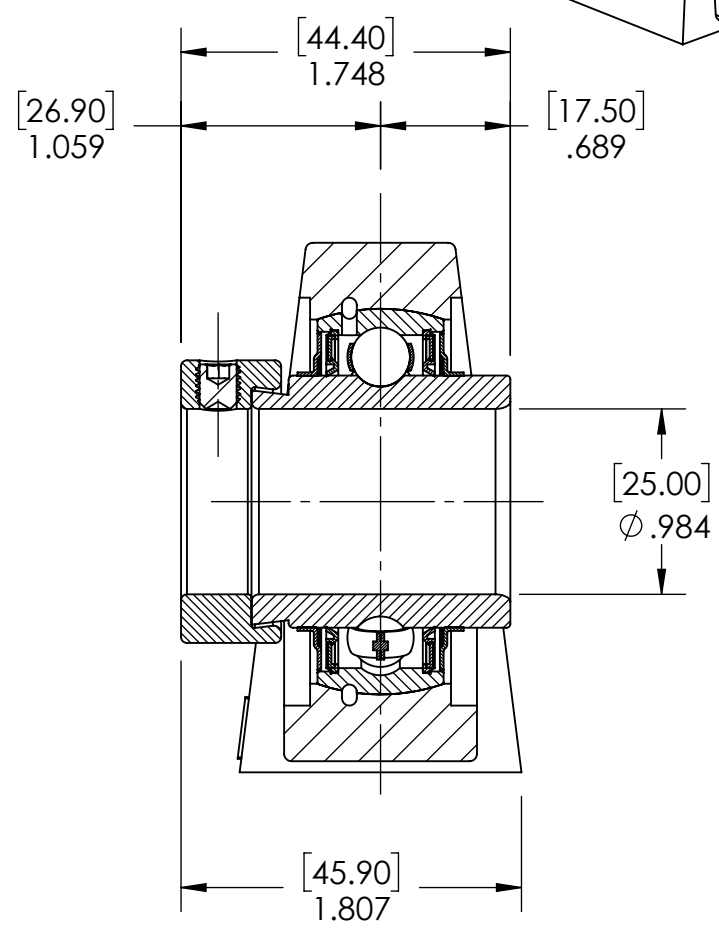
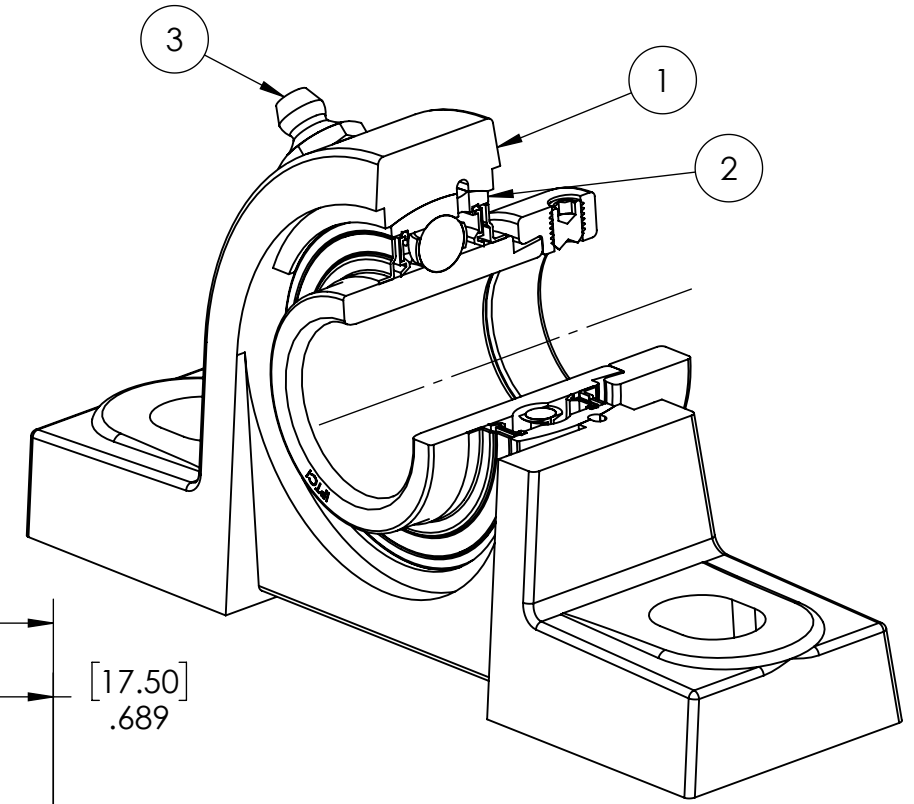
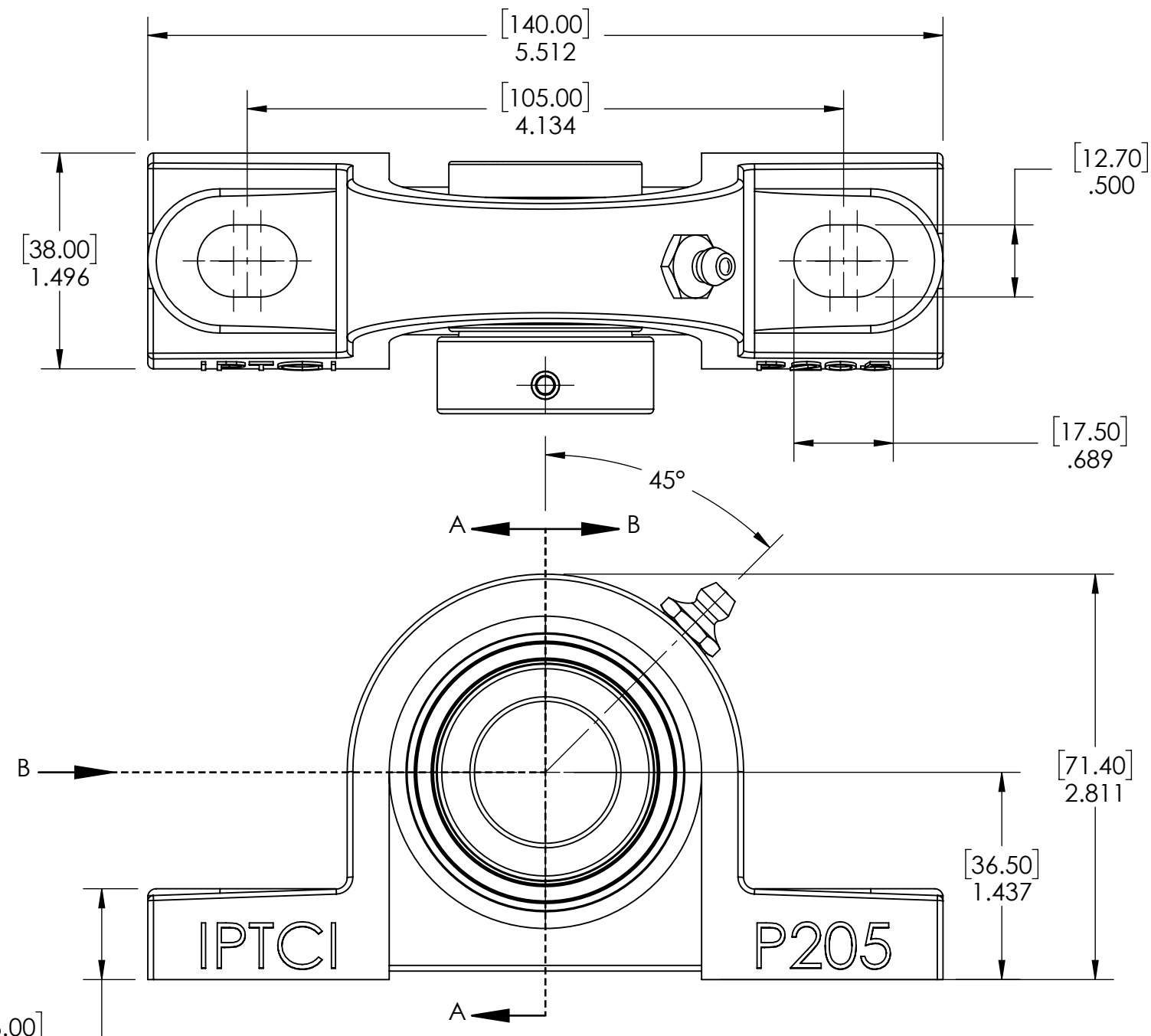


9 8 7 6 5 4 3 2 1

G F E D C B A



ITEM NO.	PART NUMBER	MATERIAL	COATING	QTY.
3	1/8-27	STEEL	ZINC PLATED	1
2	NA205-25MM	BEARING STEEL	N/A	1
1	P205	CAST IRON	POWDER COAT	1

SPECIFICATIONS		WEIGHT	
UNITS:	IN (mm)	MATERIAL	2.03
LOAD RATINGS	C: 3,010 LBS Co: 1,750 LBS	COATING	SEE NOTES
SPEED RATING	5850 RPM	DRAWN	SEC 12/16/2024
GREASE TYPE	NLGI #2	CHECKED	SEC 04/14/2025
GREASE FILL	45%	APPROVED	
OPERATING TEMP	32°F - 200°F	THIRD ANGLE PROJECTION	
SEAL TYPE	B-TYPE		
INTERNAL CLEARANCE	C3		
TORQUE SETTING ON SET SCREWS			



PROPRIETARY AND CONFIDENTIAL
THE INFORMATION CONTAINED IN THIS DRAWING IS THE SOLE PROPERTY OF SOLVE IMG. ANY REPRODUCTION IN PART OR AS A WHOLE WITHOUT THE WRITTEN PERMISSION OF SOLVE IMG IS PROHIBITED.

DATE	BY	REVISION DESCRIPTION	REV
ITEM DESCRIPTION:			SCALE
NAP205-25MM			1:10
			REV
			-

9 8 7 6 5 4 3 2 1

A B C D E F G