

9 8 7 6 5 4 3 2 1

G G

F F

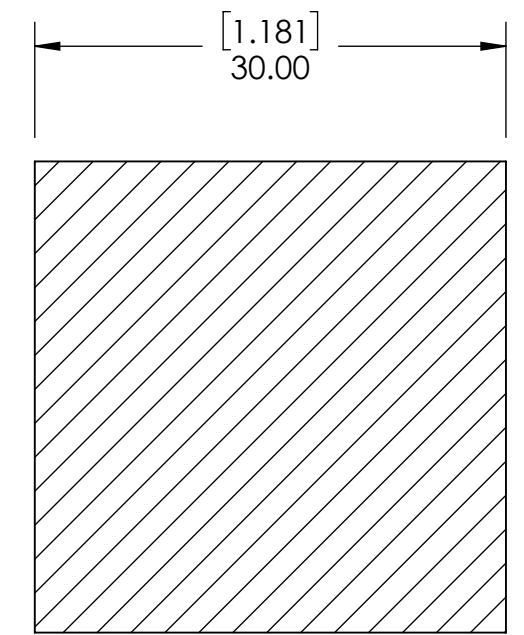
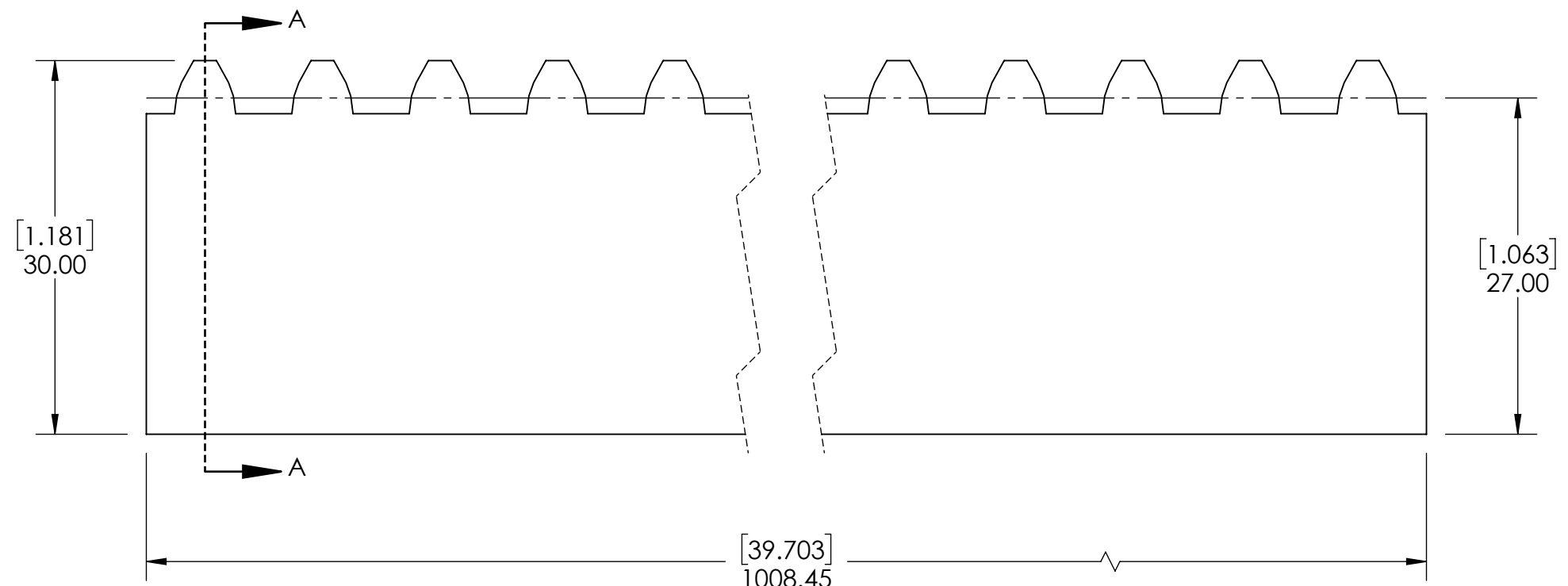
E E

D D

C C

B B

A A



SECTION A-A

GEAR RACKS SPECIFICATIONS		WEIGHT		14.39 LBS	
UNITS	mm (INCH)	MATERIAL		STEEL	
MODULE	3	COATING		N/A	
PRESSURE ANGLE	20°	DRAWN		SEC	08/29/2025
PITCH (mm)	9.4248 mm	CHECKED		SEC	08/29/2025
STOCK NO. TEETH	107	APPROVED		DATE	BY
STOCK ACTUAL LENGTH (Lr)	1008.45 mm			REVISION DESCRIPTION	
TOOTH TYPE	STRAIGHT			ITEM DESCRIPTION:	
		DWG. NO.		M3X1000	
		<small>PROPRIETARY AND CONFIDENTIAL</small> <small>THE INFORMATION CONTAINED IN THIS DRAWING IS THE SOLE PROPERTY OF SOLVE IMG. ANY REPRODUCTION IN PART OR AS A WHOLE WITHOUT THE WRITTEN PERMISSION OF SOLVE IMG IS PROHIBITED.</small>		SCALE	
				1:1	
				REV	
				-	

9 8 7 6 5 4 3 2 1