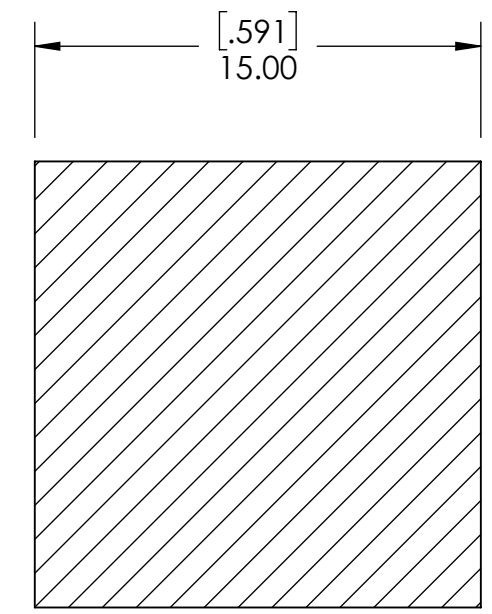
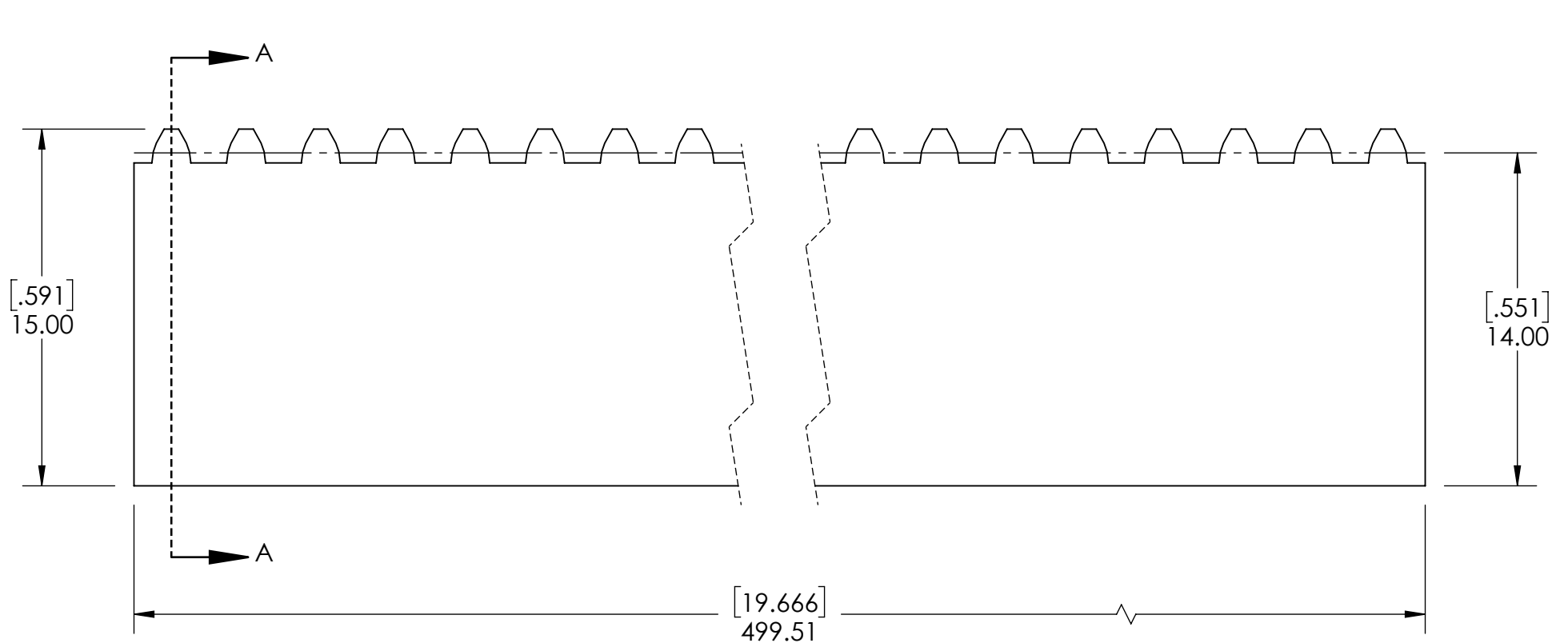


9 8 7 6 5 4 3 2 1

G
F
E
D
C
B
A

G
F
E
D
C
B
A



SECTION A-A

| GEAR RACKS SPECIFICATIONS | | WEIGHT | | 1.84 LBS | |
|---------------------------|-----------|--|-------|----------------------|-----|
| UNITS | mm (INCH) | MATERIAL | STEEL | | |
| MODULE | 1 | COATING | N/A | | |
| PRESSURE ANGLE | 20° | DRAWN | SEC | 08/29/2025 | |
| PITCH (mm) | 3.1416 mm | CHECKED | SEC | 08/29/2025 | |
| STOCK NO. TEETH | 15P | APPROVED | | | |
| STOCK ACTUAL LENGTH (Lr) | 499.51 mm | DATE | BY | REVISION DESCRIPTION | |
| TOOTH TYPE | STRAIGHT | | | ITEM DESCRIPTION: | |
| | | DWG. NO. | | M1X500 | |
| | | <small>PROPRIETARY AND CONFIDENTIAL</small> <small>THE INFORMATION CONTAINED IN THIS DRAWING IS THE SOLE PROPERTY OF SOLVE IMG. ANY REPRODUCTION IN PART OR AS A WHOLE WITHOUT THE WRITTEN PERMISSION OF SOLVE IMG IS PROHIBITED.</small> | | SCALE | 1:2 |
| | | | | REV | - |

9 8 7 6 5 4 3 2 1