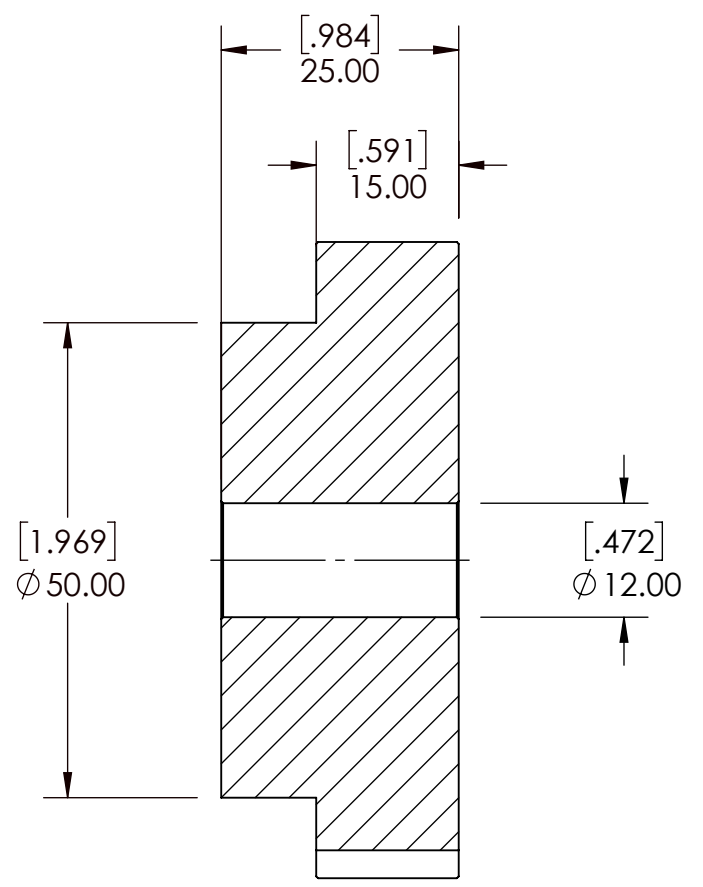
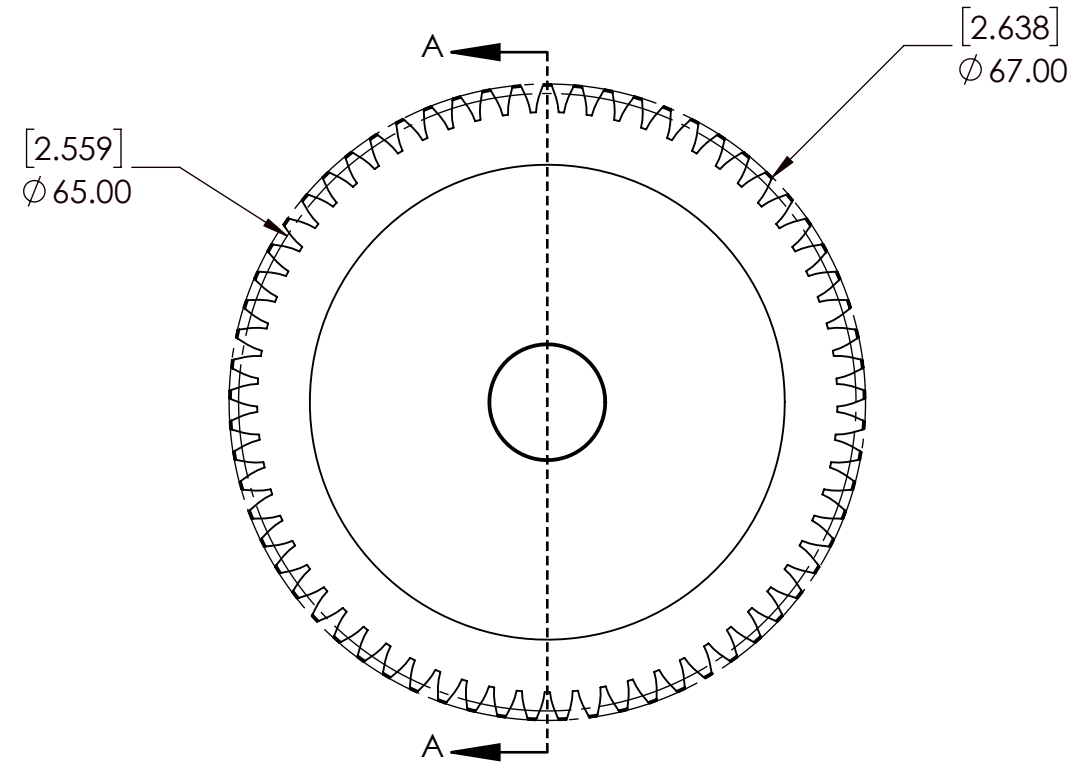
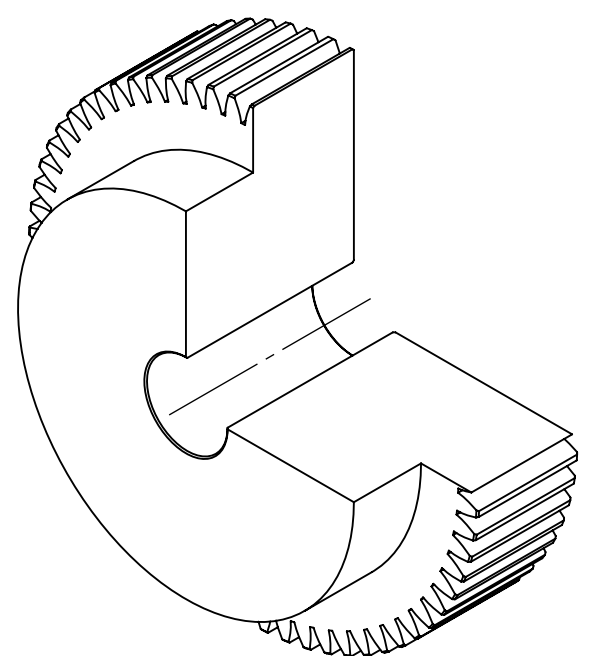


9 8 7 6 5 4 3 2 1

G
F
E
D
C
B
A



SECTION A-A

SPUR GEAR SPECIFICATIONS		WEIGHT		1.13 LBS	
UNITS	mm (INCH)	MATERIAL	STEEL		
MODULE	1	COATING	N/A		
PRESSURE ANGLE	20°	DRAWN	SEC	08/28/2025	
NUMBER OF TEETH	45	CHECKED	SEC	08/28/2025	
PITCH DIAMETER	65mm	APPROVED			
HUB TYPE	B	THIRD ANGLE PROJECTION			
MAX TORQUE (Nm)	14.59 Nm	DATE	BY	REVISION DESCRIPTION	
TOOTH TYPE	STRAIGHT	ITEM DESCRIPTION:		M1B65	REV
MAX RIM SPEED	12 M/S	DWG. NO.			SCALE
					1:1
					REV
					-

9 8 7 6 5 4 3 2 1

G
F
E
D
C
B
A