

UCFCS 4-BOLT PILOTED FLANGE UNITS



Seal Options



B-type

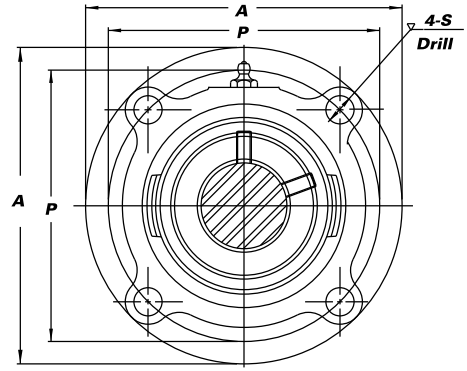
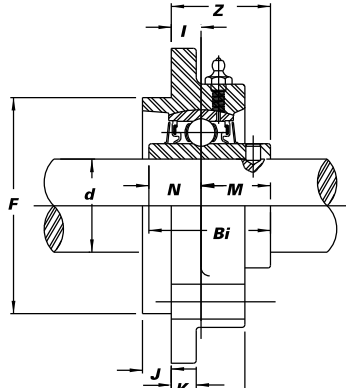


L3-type*

*Call for speed tolerances and available sizes

Set screw lock.

- » Cast iron housing
- » Wide inner race bearing



Unit No.	Shaft Dia.		Dimensions (in.) (mm)											Bolt Used (in.)	Bearing No.	Housing No.	Weight (lbs.)		
	d (in.)	d (mm)	A	P	S	J	K	G	F	I	Z	Bi	N					M	
UCFCS 206-17	1 ¹ / ₁₆																UC 206-17		
206-18	1 ¹ / ₈																206-18		
206		30	4 ³ / ₈	3 ⁵ / ₈	3 ⁷ / ₈	1 ⁵ / ₆₄	3 ⁷ / ₈	1 ⁵ / ₁₆	3.000	2 ⁵ / ₆₄	1 ⁹ / ₃₂	1.5000	0.6260	0.8740	5 ¹ / ₁₆		206	FC X05	2.6
206-19	1 ³ / ₁₆		111	92	9.5	6.0	9.5	24.0	76.2	10	32.2	38.1	15.9	22.2			206-19		
206-20	1 ¹ / ₄ S																206-20		
UCFCS 207-20	1 ¹ / ₄																UC 207-20		
207-21	1 ⁵ / ₁₆																207-21		
207-22	1 ³ / ₈	35	5	4 ¹ / ₈	1 ⁵ / ₃₂	3 ⁷ / ₈	3 ⁷ / ₈	7 ⁷ / ₈	3.375	5 ¹ / ₁₆	1 ⁵ / ₁₆	1.6890	0.6890	1.0000	3 ⁷ / ₈		207-22	FC X06	3.3
207			127	104.8	12.0	9.5	9.5	22.5	85.7	8	33.4	42.9	17.5	25.4			207		
207-23	1 ⁷ / ₁₆																207-23		
UCFCS 208-24	1 ¹ / ₂																UC 208-24		
208-25	1 ⁹ / ₁₆	40	5 ¹ / ₄	4 ³ / ₈	1 ⁵ / ₃₂	7 ⁷ / ₁₆	7 ⁷ / ₁₆	1 ¹ / ₃₂	3.625	2 ³ / ₆₄	1 ¹⁷ / ₃₂	1.9370	0.7480	1.1890	3 ⁷ / ₈		208-25	FC X07	4.2
208			133	111	12.0	11.0	11.0	26.0	92.1	9	39.2	49.2	19.0	30.2			208		
UCFCS 209-26	1 ⁵ / ₈																UC 209-26		
209-27	1 ¹¹ / ₁₆																209-27		
209-28	1 ³ / ₄	45	5 ¹ / ₄	4 ³ / ₈ *	1 ⁵ / ₃₂	7 ⁷ / ₁₆	7 ⁷ / ₁₆	1 ¹ / ₃₂	3.625*	2 ³ / ₆₄	1 ¹⁷ / ₃₂	1.9370	0.7480	1.1890	3 ⁷ / ₈		209-28	FC X08	4.4
209			133	111	12.0	11.0	11.0	26.0	92.1	9	39.2	49.2	19.0	30.2			209		
UCFCS 210-30	1 ⁷ / ₈																UC 210-30		
210-31	1 ¹⁵ / ₁₆																210-31		
210		50	6 ³ / ₃₂	5 ¹ / ₈	3 ⁵ / ₆₄	1 ⁵ / ₃₂	7 ⁷ / ₁₆	1	4.250	5 ¹ / ₁₆	1 ¹⁹ / ₃₂	2.0315	0.7480	1.2835	7 ⁷ / ₁₆		210	FC X09	5.7
210-32	2S		155	130	14.0	12.0	11.0	25.0	108.0	8	40.6	51.6	19.0	32.6			210-32		
UCFCS 211-32	2																UC 211-32		
211		55	6 ³ / ₈	5 ³ / ₈	3 ⁵ / ₆₄	5 ⁷ / ₈	7 ⁷ / ₁₆	1	4.500	9 ¹ / ₃₂	1 ¹⁹ / ₃₂	2.1890	0.8740	1.3150	7 ⁷ / ₁₆		211	FC X10	7.0
211-35	2 ³ / ₁₆		162	136.5	14.0	16.0	11.0	25.0	114.3	7	40.4	55.6	22.2	33.4			211-35		
UCFCS 212-36	2 ¹ / ₄																UC 212-36		
212		60	7 ³ / ₃₂	6	5 ⁷ / ₈	5 ⁵ / ₆₄	1 ¹ / ₂	1 ¹ / ₃₂	5.000	5 ¹ / ₃₂	1 ²³ / ₃₂	2.5630	1.0000	1.5630	1 ¹ / ₂		212		
212-38	2 ³ / ₈		180	152.4	16.0	22.0	13.0	26.0	127.0	4	43.7	65.1	25.4	39.7			212-38	FC X11	9.5
212-39	2 ⁷ / ₁₆																212-39		
UCFCS 213-40	2 ¹ / ₂																UC 213-40		
213		65	7 ⁷ / ₈	6 ¹ / ₂	5 ⁷ / ₈	2 ⁵ / ₃₂	9 ¹ / ₁₆	1 ⁵ / ₁₆	5.500	7 ⁷ / ₁₆	2	2.5630	1.0000	1.5630	1 ¹ / ₂		213	FC X12	11.7
UCFCS 214-43	2 ¹¹ / ₁₆																UC 214-43		
214		70	7 ⁷ / ₈	6 ¹ / ₂	5 ⁷ / ₈	2 ⁵ / ₃₂	9 ¹ / ₁₆	1 ⁵ / ₁₆	5.500	7 ⁷ / ₁₆	2 ⁹ / ₁₆	2.9370	1.1890	1.7480	1 ¹ / ₂		214	FC X13	12.5

* Also available in FCF(209) style housing where P=5¹/₈, F=4.250.

See page 37.