

THERMOPLASTIC TAPPED BASE PILLOW BLOCKS



Seal Options



B-type



L3-type*

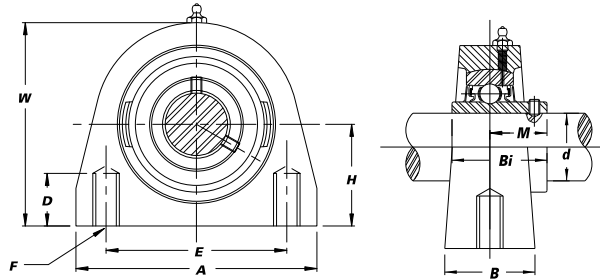


IP69K*

*Call for speed tolerances and available sizes

Optional bearing inserts: Stainless Steel-SUCTPA, Hard Chrome Coated-CUCTPA, Black Oxide-BUCTPA

- » End caps available
- » Overview of corrosion resistant products – pg. 47-48



Unit No.	Shaft Dia.		Dimensions (in.) (mm)									Bearing No.	Housing No.	Weight (lbs.)	
	<i>d</i>	<i>d</i>	<i>H</i>	<i>A</i>	<i>E</i>	<i>B</i>	<i>W</i>	<i>F</i> -Tapped Holes	<i>D</i> -Min Tap Depth	<i>M</i>	<i>Bi</i>				
SUCTPA with Stainless Steel Bearing Inserts															
SUCTPA 201-8	1/2												SUC 201-8		
202-10	5/8	20	1 ⁵ / ₁₆	2 ⁷ / ₈	2	1 ³ / ₈	2 ¹⁹ / ₃₂	3/8"-16	1/2	0.7205	1.2205	SUC 202-10	TPA 204	.6	
204-12	3/4		33.3	73	50.8	35	66	UNC	13	18.3	31.0	SUC 204-12			
204												204			
SUCTPA 205-14	7/8	25	1 ⁷ / ₁₆	3	2	1 ⁹ / ₁₆	2 ²⁹ / ₃₂	3/8"-16	1/2	0.7756	1.3386	SUC 205-14	TPA 205	.8	
205			36.5	76	50.8	40	74	UNC	13	19.7	34.0	SUC 205			
205-16	1											205-16			
SUCTPA 206-18	1 ¹ / ₈	30	1 ¹¹ / ₁₆	4	3	1 ¹¹ / ₁₆	3 ⁵ / ₁₆	7/16"-14	1/2	0.8740	1.5000	SUC 206-18	TPA 206	1.2	
206			42.9	102	76.2	43	84	UNC	13	22.2	38.1	SUC 206			
206-19	1 ³ / ₁₆											SUC 206-19			
206-20	1 ¹ / ₄ S											206-20			
SUCTPA 207-20	1 ¹ / ₄	35	1 ⁷ / ₈	4 ⁵ / ₁₆	3 ¹ / ₄	1 ⁷ / ₈	3 ³ / ₄	1/2"-13	4 ¹ / ₆₄	1.0000	1.6890	SUC 207-20	TPA 207	1.7	
207-21	1 ⁵ / ₁₆		47.6	110	82.6	48	95	UNC	16	25.4	42.9	SUC 207-21			
207-22	1 ³ / ₈											SUC 207-22			
207												207			
207-23	1 ⁷ / ₁₆											207-23			
SUCTPA 208-24	1 ¹ / ₂	40	1 ¹⁵ / ₁₆	4 ³ / ₄	3 ¹ / ₂	1 ⁷ / ₈	4	1/2"-13	4 ¹ / ₆₄	1.1890	1.9370	SUC 208-24	TPA 208	2.1	
208			49.2	120	88.9	48	101	UNC	16	30.2	49.2	SUC 208			
CUCTPA with Hard Chrome Coated Bearing Inserts															
CUCTPA 204-12	3/4	20	1 ⁵ / ₁₆	2 ⁷ / ₈	2	1 ³ / ₈	2 ¹⁹ / ₃₂	3/8"-16	1/2	0.7205	1.2205	CUC 204-12	TPA 204	.6	
204			33.3	73	50.8	35	66	UNC	13	18.3	31.0	CUC 204			
CUCTPA 205-14	7/8	25	1 ⁷ / ₁₆	3	2	1 ⁹ / ₁₆	2 ²⁹ / ₃₂	3/8"-16	1/2	0.7756	1.3386	CUC 205-14	TPA 205	.8	
205			36.5	76	50.8	40	74	UNC	13	19.7	34.0	CUC 205			
205-16	1											205-16			
CUCTPA 206-18	1 ¹ / ₈	30	1 ¹¹ / ₁₆	4	3	1 ¹¹ / ₁₆	3 ⁵ / ₁₆	7/16"-14	1/2	0.8740	1.5000	CUC 206-18	TPA 206	1.2	
206			42.9	102	76.2	43	84	UNC	13	22.2	38.1	CUC 206			
206-19	1 ³ / ₁₆											CUC 206-19			
206-20	1 ¹ / ₄ S											206-20			
CUCTPA 207-20	1 ¹ / ₄	35	1 ⁷ / ₈	4 ⁵ / ₁₆	3 ¹ / ₄	1 ⁷ / ₈	3 ³ / ₄	1/2"-13	4 ¹ / ₆₄	1.0000	1.6890	CUC 207-20	TPA 207	1.7	
207-22	1 ³ / ₈		47.6	110	82.6	48	95	UNC	16	25.4	49.2	CUC 207-22			
207												207			
207-23	1 ⁷ / ₁₆											207-23			
CUCTPA 208-24	1 ¹ / ₂	40	1 ¹⁵ / ₁₆	4 ³ / ₄	3 ¹ / ₂	1 ⁷ / ₈	4	1/2"-13	4 ¹ / ₆₄	1.1890	1.9370	CUC 208-24	TPA 208	2.1	
208			49.2	120	88.9	48	101	UNC	16	30.2	49.2	CUC 208			
BUCTPA with Black Oxide Bearing Inserts															
BUCTPA 201-8	1/2												BUC 201-8		
202-10	5/8	20	1 ⁵ / ₁₆	2 ⁷ / ₈	2	1 ³ / ₈	2 ¹⁹ / ₃₂	3/8"-16	1/2	0.7205	1.2205	BUC 202-10	TPA 204	.6	
204-12	3/4		33.3	73	50.8	35	66	UNC	13	18.3	31.0	BUC 204-12			
204												204			
BUCTPA 205-14	7/8	25	1 ⁷ / ₁₆	3	2	1 ⁹ / ₁₆	2 ²⁹ / ₃₂	3/8"-16	1/2	0.7756	1.3386	BUC 205-14	TPA 205	.8	
205			36.5	76	50.8	40	74	UNC	13	19.7	34.0	BUC 205			
205-16	1											205-16			
BUCTPA 206-18	1 ¹ / ₈	30	1 ¹¹ / ₁₆	4	3	1 ¹¹ / ₁₆	3 ⁵ / ₁₆	7/16"-14	1/2	0.8740	1.5000	BUC 206-18	TPA 206	1.2	
206			42.9	102	76.2	43	84	UNC	13	22.2	38.1	BUC 206			
206-19	1 ³ / ₁₆											BUC 206-19			
206-20	1 ¹ / ₄ S											206-20			
BUCTPA 207-20	1 ¹ / ₄	35	1 ⁷ / ₈	4 ⁵ / ₁₆	3 ¹ / ₄	1 ⁷ / ₈	3 ³ / ₄	1/2"-13	4 ¹ / ₆₄	1.0000	1.6890	BUC 207-20	TPA 207	1.7	
207-22	1 ³ / ₈		47.6	110	82.6	48	95	UNC	16	25.4	42.9	BUC 207-22			
207												207			
207-23	1 ⁷ / ₁₆											207-23			
BUCTPA 208-24	1 ¹ / ₂	40	1 ¹⁵ / ₁₆	4 ³ / ₄	3 ¹ / ₂	1 ⁷ / ₈	4	1/2"-13	4 ¹ / ₆₄	1.1890	1.9370	BUC 208-24	TPA 208	2.1	
208			49.2	120	88.9	48	101	UNC	16	30.2	49.2	BUC 208			