

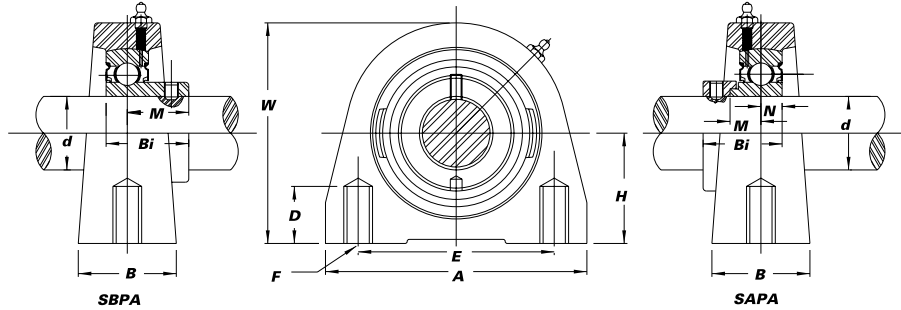
SBPA & SAPA TAPPED BASE PILLOW BLOCKS



Seal Options



- » Cast iron housing
- » Narrow inner race bearing



SBPA Set screw type

Unit No.	Shaft Dia.		Dimensions (in.) (mm)									Bearing No.	Housing No.	Weight (lbs.)
	d (in.)	d (mm)	H	A	E	B	W	F-Tapped Holes	D-Min Tap Depth	M	Bi			
SBPA 204-12 204	3/4	20	1 5/16 33.3	2 7/8 73	2 50.8	1 1/2 38	2 9/16 65	3/8"-16 UNC	1/2 13	0.7087 18.0	0.9843 25.0	SB 204-12G 204G	PA 204	1.3
SBPA 205-14 205-15 205 205-16	7/8 1 5/16 1	25	1 7/16 36.5	3 76	2 50.8	1 1/2 38	2 13/16 71	3/8"-16 UNC	1/2 13	0.7677 19.5	1.0630 27.0	SB 205-14G 205-15G 205G 205-16G	PA 205	1.5
SBPA 206-17 206-18 206 206-19 206-20	1 1/16 1 1/8 1 3/16 1 1/4 S	30	1 11/16 42.9	4 102	3 76.2	1 1/2 38	3 3/8 86	7/16"-14 UNC	5/8 16	0.8661 22.0	1.1811 30.0	SB 206-17G 206-18G 206G 206-19G 206-20G	PA 206	2.5
SBPA 207-20 207-21 207-22 207 207-23	1 1/4 1 5/16 1 3/8 1 7/16	35	1 7/8 47.6	4 1/4 108	3 1/4 82.6	1 7/8 48	3 3/4 95	1/2"-13 UNC	3/4 19	0.9252 23.5	1.2992 33.0	SB 207-20G 207-21G 207-22G 207G 207-23G	PA 207	3.4
SBPA 208-24 208	1 1/2	40	1 15/16 49.2	4 5/8 117	3 1/2 88.9	1 7/8 48	3 15/16 100	1/2"-13 UNC	3/4 19	0.9843 25.0	1.4173 36.0	SB 208-24G 208G	PA 208	3.8

SAPA Eccentric locking collar type

Unit No.	Shaft Dia.		Dimensions (in.) (mm)									Bearing No.	Housing No.	Weight (lbs.)	
	d (in.)	d (mm)	H	A	E	B	W	F-Tapped Holes	D-Min Tap Depth	M	N				Bi
SAPA 204-12 204	3/4	20	1 5/16 33.3	2 7/8 73	2 50.8	1 1/2 38	2 9/16 65	3/8"-16 UNC	1/2 13	0.5112 14.0	0.2953 7.5	1.2205 31.0	SA 204-12G 204G	PA 204	1.4
SAPA 205-14 205-15 205 205-16	7/8 1 5/16 1	25	1 7/16 36.5	3 76	2 50.8	1 1/2 38	2 13/16 71	3/8"-16 UNC	1/2 13	0.5513 14.0	0.2953 7.5	1.2205 31.0	SA 205-14G 205-15G 205G 205-16G	PA 205	1.6
SAPA 206-17 206-18 206 206-19 206-20	1 1/16 1 1/8 1 3/16 1 1/4 S	30	1 11/16 42.9	4 102	3 76.2	1 1/2 38	3 3/8 86	7/16"-14 UNC	5/8 16	0.5827 14.8	0.3543 9.0	1.4055 35.7	SA 206-17G 206-18G 206G 206-19G 206-20G	PA 206	2.6
SAPA 207-20 207-21 207-22 207 207-23	1 1/4 1 5/16 1 3/8 1 7/16		1 7/8 47.6	4 1/4 108	3 1/4 82.6	1 7/8 48	3 3/4 95	1/2"-13 UNC	3/4 19	0.6260 15.9	0.3740 9.5	1.5315 38.9	SA 207-20G 207-21G 207-22G 207G 207-23G	PA 207	3.7
SAPA 208-24	1 1/2		1 15/16 49.2	4 5/8 117	3 1/2 88.9	1 7/8 48	3 15/16 100	1/2"-13 UNC	3/4 19	0.7559 19.2	0.4331 11.0	1.7205 43.7	SA 208-24G	PA 208	4.2
SAPA 209-27 209-28	1 1/16 1 3/4		2 1/8 54.0	5 127	3 3/4 95.3	2 51	4 1/4 108	1/2"-13 UNC	3/4 19	0.7559 19.2	0.4331 11.0	1.7205 43.7	SA 209-27G 209-28G	PA 209	5.1
SAPA 210-30 210-31 210-32	1 7/8 1 15/16 2 S		2 1/4 57.2	5 1/2 140	4 101.6	2 51	4 5/8 117	5/8"-11 UNC	7/8 22	0.7559 19.2	0.4331 11.0	1.7205 43.7	SA 210-30G 210-31G 210-32G	PA 210	5.9

Interchange Page 95