

SAP PILLOW BLOCKS

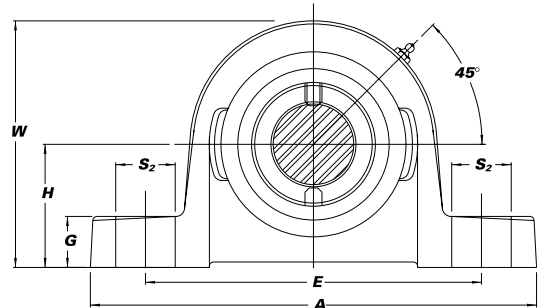
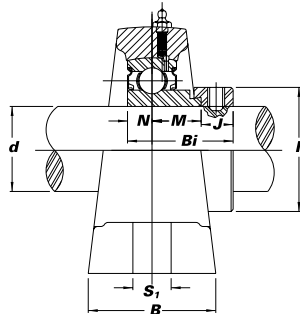


Seal Options



High shaft height with eccentric locking collar.

- » Cast iron housing
- » Narrow inner race bearing



Unit No.	Shaft Dia.		Dimensions (in.) (mm)											Bolt Used (in.)	Bearing No.	Housing No.	Housing Weight (lbs.)			
	d (in.)	d (mm)	H	A	E	B	S ₂	S ₁	G	W	Bi	N	M					J	K	
SAP 201		12																SA 201G		
201-8	1/2	15	13/16	47/8	35/8	17/16	3/4	7/16	17/32	223/64	1.1260	0.2559	0.4960	0.3740	1.1260		3/8	201-8G		
202			30.2	124	92	37	19	11	13	60	28.6	6.5	12.6	9.5	28.6			202G	P 203	1.6
202-10	5/8	17																202-10G		
203																		203G		
SAP 204-12	3/4	20	15/16	5	33/4	11/2	11/16	7/16	9/16	219/32	1.2205	0.2953	0.5512	0.3740	1.3110		3/8	SA 204-12G		
204			33.3	127	95	38	17	11	14	66	31.0	7.5	14.0	9.5	33.3			204G	P 204	1.7
SAP 205-14	7/8	25	17/16	51/2	41/8	11/2	11/16	1/2	5/8	227/32	1.2205	0.2953	0.5513	0.3740	1.5000		3/8	SA 205-14G		
205-15	15/16		36.5	140	105	38	17	13	16	72	31.0	7.5	14.0	9.5	38.1			205-15G	P 205	2.1
205																		205G		
205-16	1																	205-16G		
SAP 206-17	11/16	30	111/16*	65/16	43/4	13/4	13/16	9/16	11/16	319/64	1.4055	0.3543	0.5827	0.4685	1.7520		1/2	SA 206-17G		
206-18	13/8		42.9	160	121	44	21	14	18	84	35.7	9.0	14.8	11.9	44.5			206-18G	P 206	3.0
206																		206G		
206-19	13/16																	206-19G		
206-20	13/8S																	206-20G		
SAP 207-20	13/8	35	17/8	617/32	5	129/32	7/8	9/16	3/4	311/16	1.5315	0.3740	0.6260	0.5315	2.1890		1/2	SA 207-20G		
207-21	15/16		47.6	166	127	48	22	14	19	94	38.9	9.5	15.9	13.5	55.6			207-21G	P 207	4.1
207-22	13/8																	207-22G		
207																		207G		
207-23	17/16																	207-23G		
SAP 208-24	11/2	40	115/16**	71/8	57/16	2	7/8	9/16	13/16	4	1.7205	0.4331	0.7559	0.5315	2.3740		1/2	SA 208-24G		
208-25	13/8		49.2	181	137	51	22	14	21	102	43.7	11.0	19.2	13.5	60.3			208-25G	P 208	5.1
208																		208G		
SAP 209-26	15/8	45	21/8	71/2	53/4	21/8	13/16	19/32	7/8	417/64	1.7205	0.4331	0.7559	0.5315	2.5000		1/2	SA 209-26G		
209-27	111/16		54.0	190	146	54	21	15	22	109	43.7	11.0	19.2	13.5	63.5			209-27G	P 209	5.9
209-28	13/4																	209-28G		
209																		209G		
SAP 210-30	17/8	50	21/4	8	61/4	21/4	15/16	23/32	15/16	433/64	1.7205	0.4331	0.7559	0.5315	2.7520		5/8	SA 210-30G		
210-31	115/16		57.2	203	159	57	24	18	24	115	43.7	11.0	19.2	13.5	69.9			210-31G	P 210	6.8
210																		210G		
210-32	2S																	210-32G		
SAP 211-32	2	55	21/2	85/8	67/8	23/8	15/16	23/32	11/16	51/32	1.9055	1.4724	0.8031	0.6300	3.0000		5/8	SA 211-32G		
211-34	21/8		63.5	220	174	60	24	18	27	128	48.4	12.0	20.4	16.0	76.2			211-34G	P 211	9.0
211																		211G		
211-35	23/16																	211-35G		

Interchange Page 95 *Also available 15/8" **Also available 21/8"