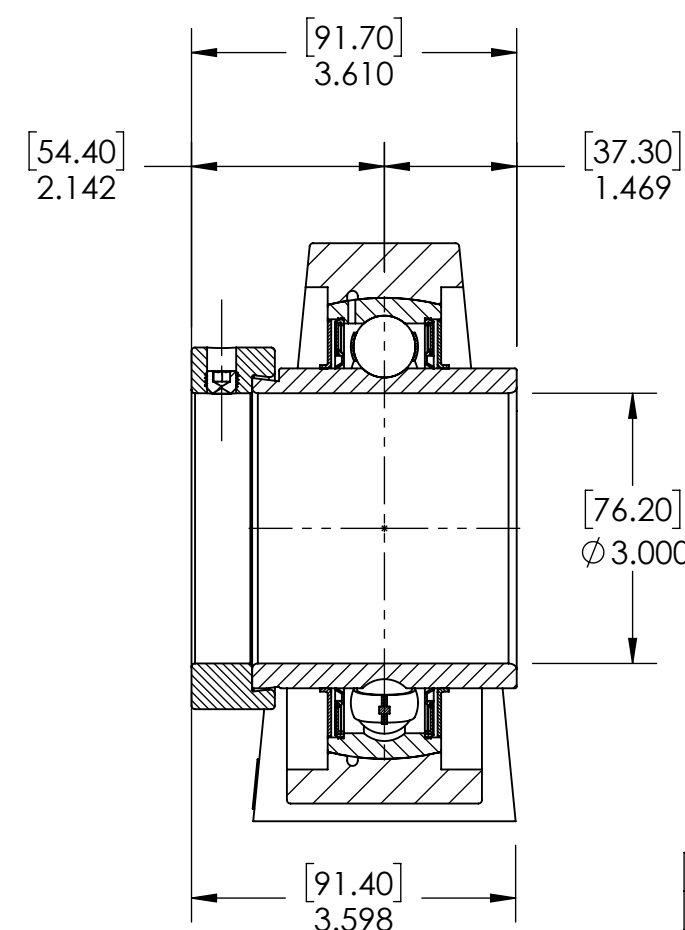
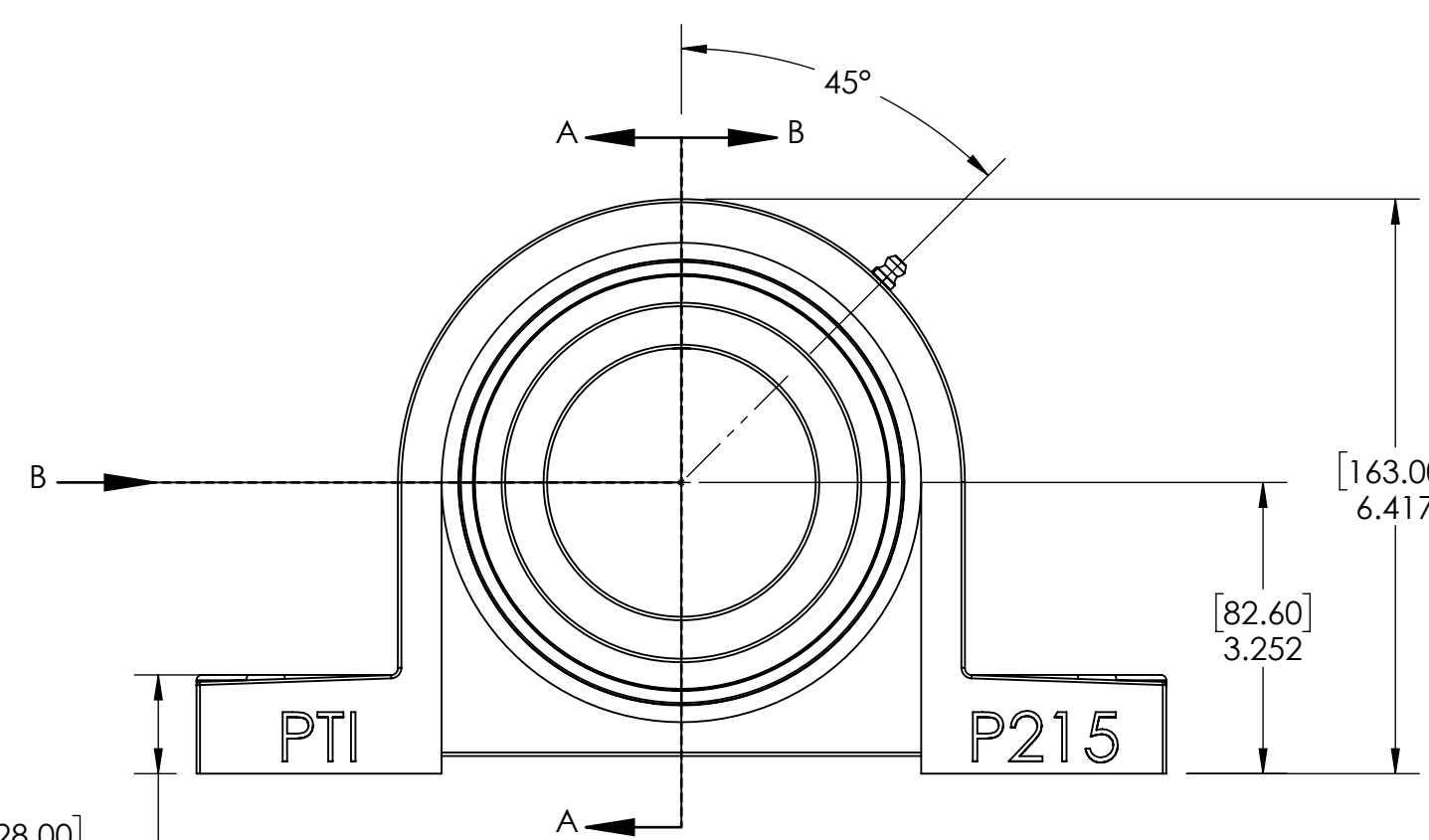
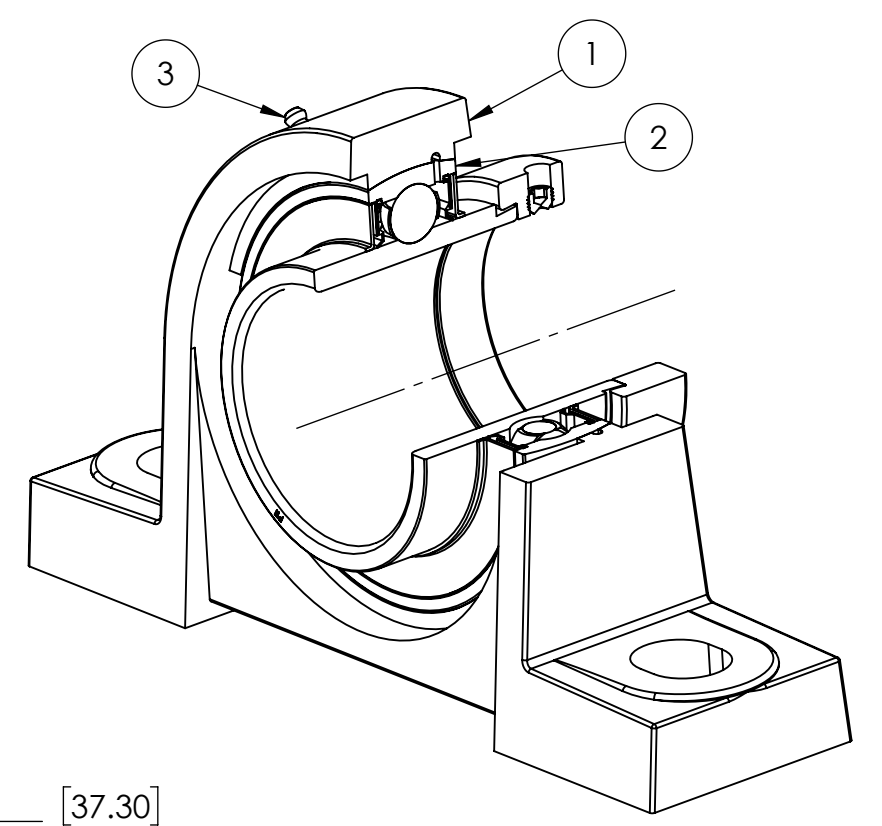
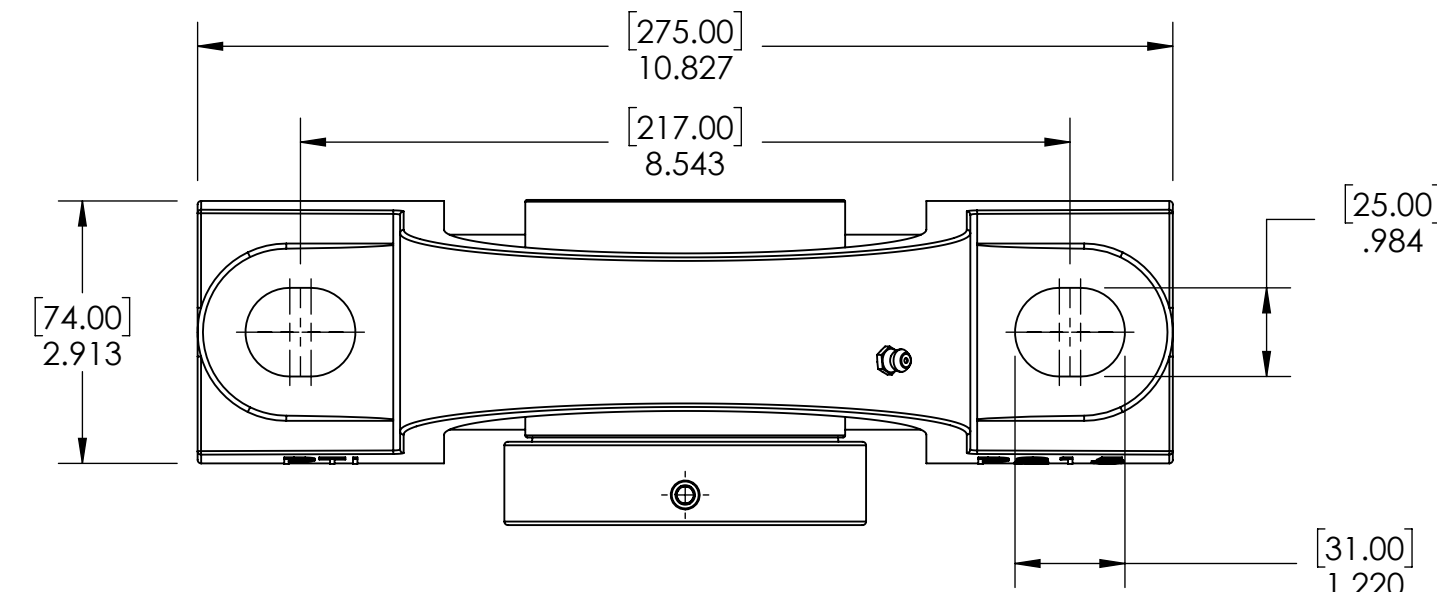


9 8 7 6 5 4 3 2 1

G F E D C B A



| ITEM NO. | PART NUMBER | MATERIAL      | COATING     | QTY. |
|----------|-------------|---------------|-------------|------|
| 3        | M6 ZERK     | STEEL         | ZINC PLATED | 1    |
| 2        | HC215-48    | BEARING STEEL | N/A         | 1    |
| 1        | P215        | CAST IRON     | POWDER COAT | 1    |

| SPECIFICATIONS               |                                 | WEIGHT                 |                |
|------------------------------|---------------------------------|------------------------|----------------|
| UNITS:                       | IN (mm)                         |                        | 15.59 LBS      |
| LOAD RATINGS                 | C: 14,000 LBS<br>Co: 10,050 LBS | MATERIAL               | SEE BOM        |
| SPEED RATING                 | 2300 RPM                        | COATING                | SEE BOM        |
| GREASE TYPE                  | NLGI #2                         | DRAWN                  | SEC 12/26/2024 |
| GREASE FILL                  | 40%                             | CHECKED                | FP 01/02/2025  |
| OPERATING TEMP               | 10°F - 200°F                    | APPROVED               |                |
| SEAL TYPE                    | B-TYPE                          | THIRD ANGLE PROJECTION |                |
| INTERNAL CLEARANCE           | C3                              |                        |                |
| TORQUE SETTING ON SET SCREWS |                                 |                        |                |



PROPRIETARY AND CONFIDENTIAL  
THE INFORMATION CONTAINED IN THIS DRAWING IS THE SOLE PROPERTY OF SOLVE IMG. ANY REPRODUCTION IN PART OR AS A WHOLE WITHOUT THE WRITTEN PERMISSION OF SOLVE IMG IS PROHIBITED.

| DATE | BY | REVISION DESCRIPTION        | REV       |
|------|----|-----------------------------|-----------|
|      |    | ITEM DESCRIPTION: HCP215-48 | SCALE 1:5 |
|      |    |                             | REV -     |

9 8 7 6 5 4 3 2 1

A B C D E F G