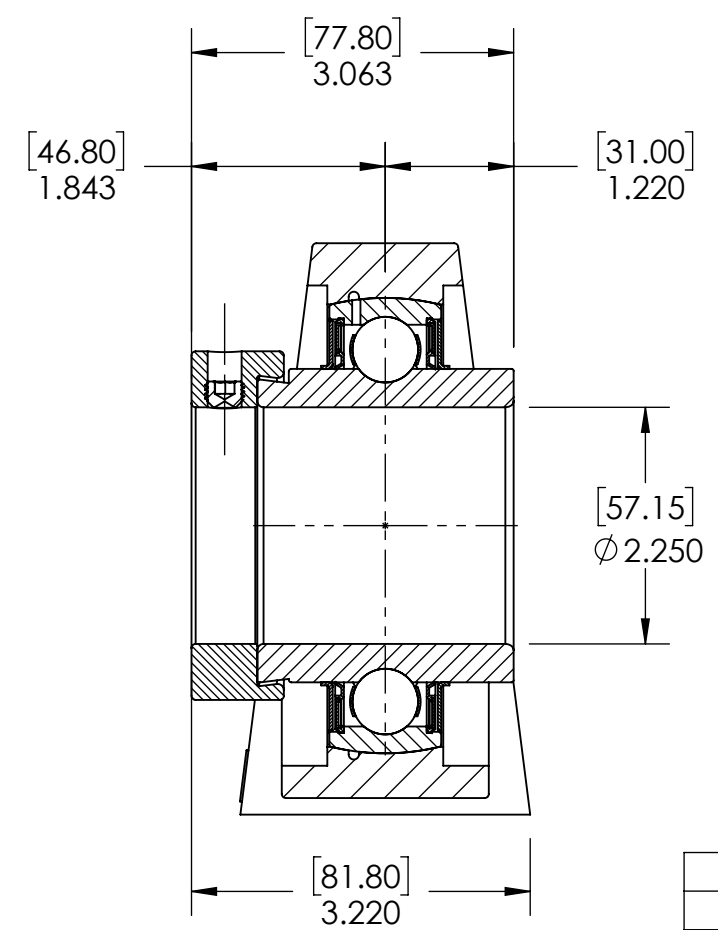
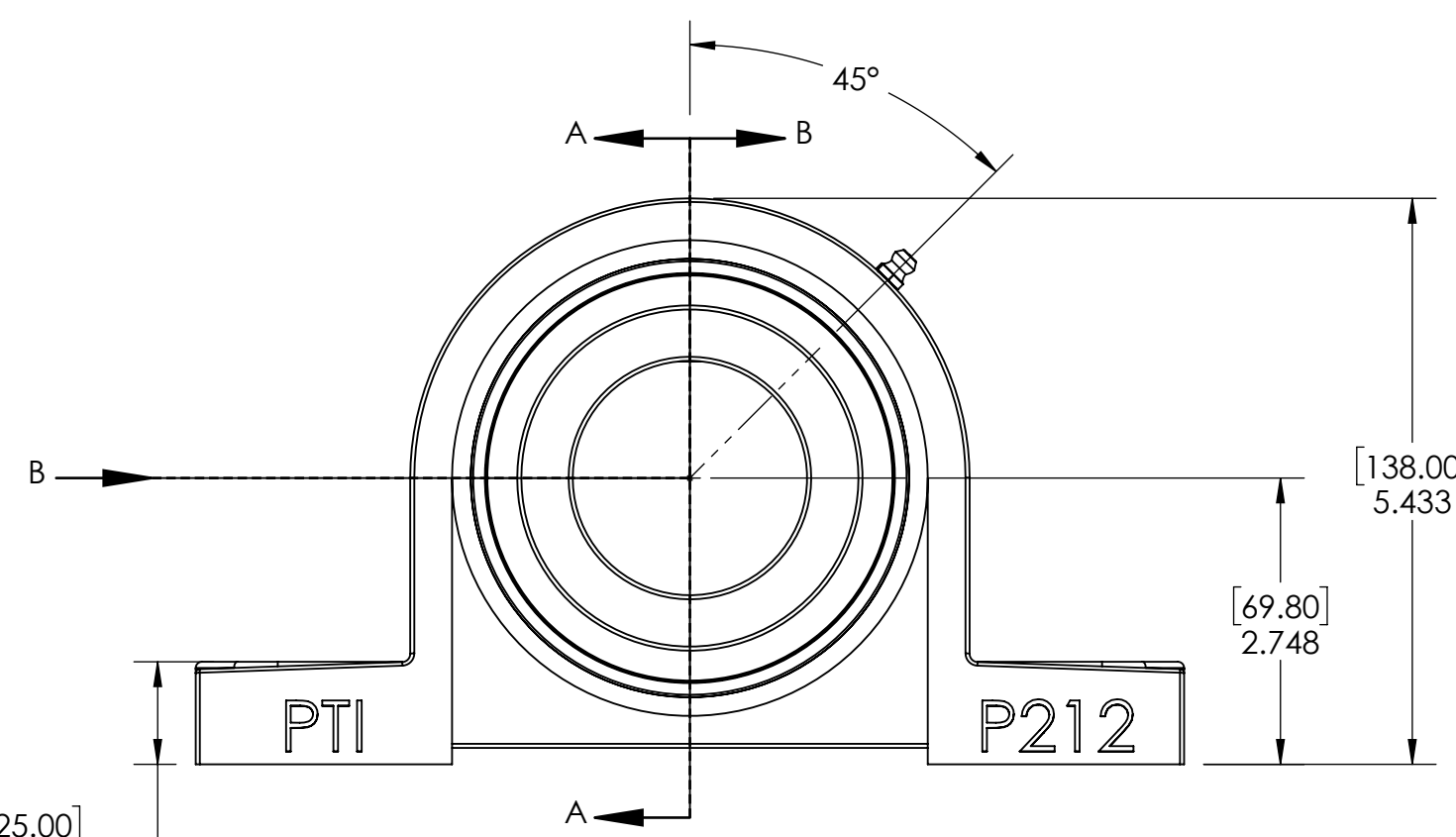
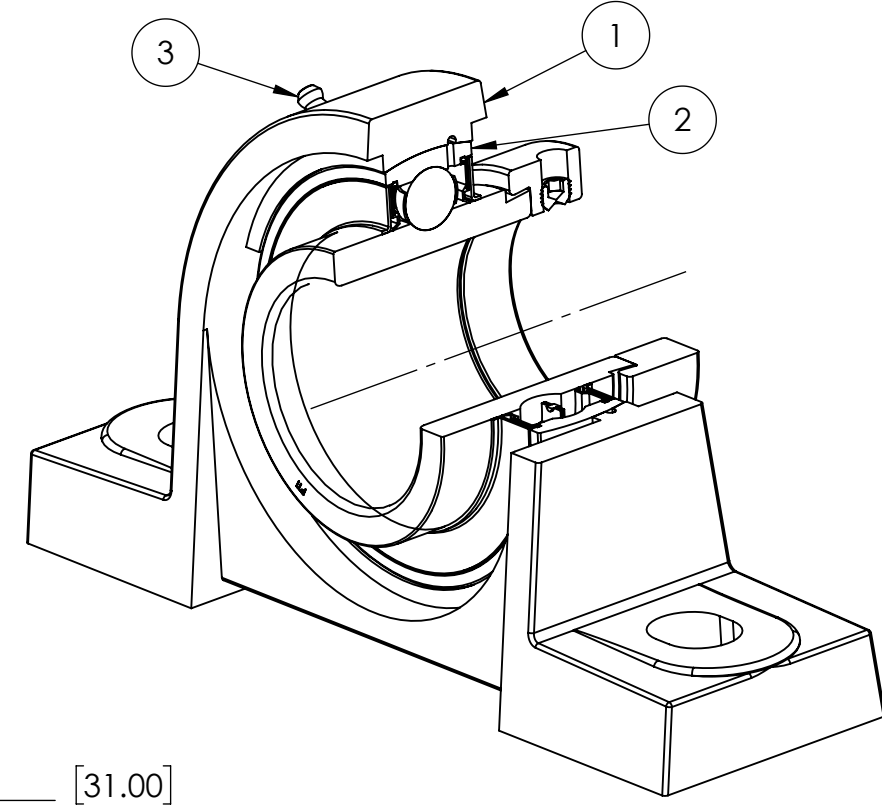
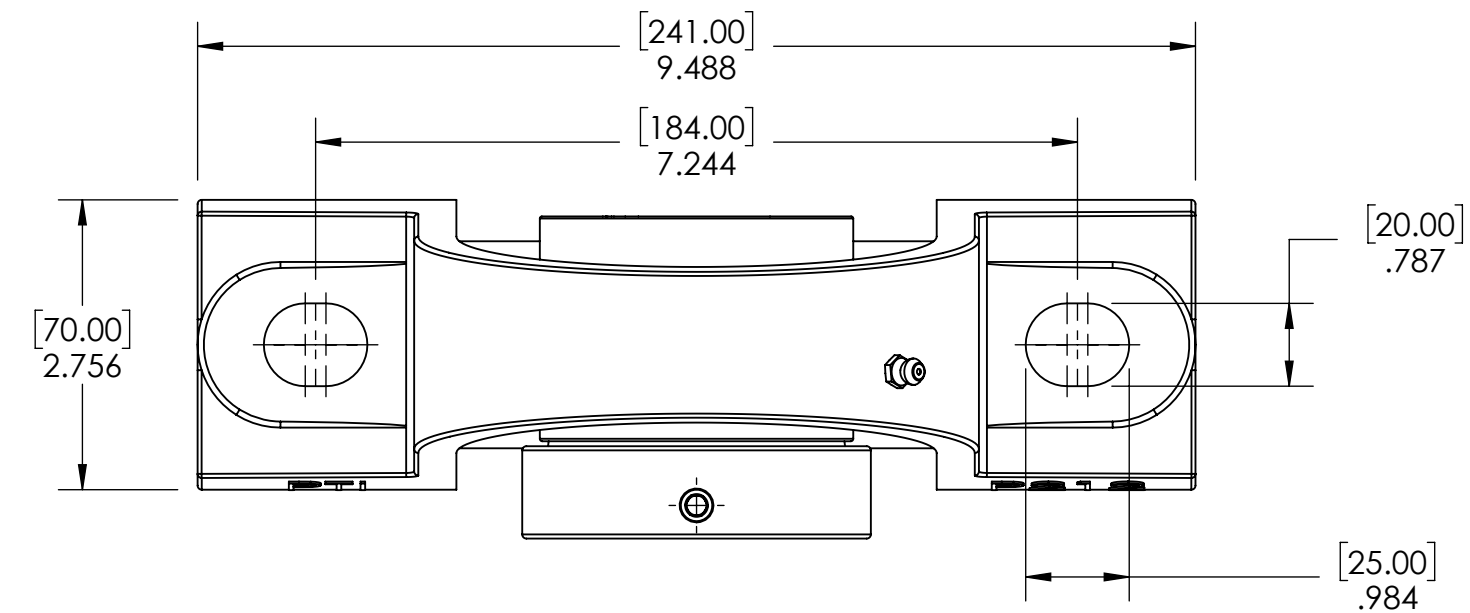


9 8 7 6 5 4 3 2 1

G F E D C B A



ITEM NO.	PART NUMBER	MATERIAL	COATING	QTY.
3	M6 ZERK	STEEL	ZINC PLATED	1
2	HC212-36	BEARING STEEL	N/A	1
1	P212	CAST IRON	POWDER COAT	1

SPECIFICATIONS		WEIGHT	
UNITS:	IN [mm]		11.04 LBS
LOAD RATINGS	C: 11,800 LBS Co: 8,090 LBS	MATERIAL	SEE BOM
SPEED RATING	2800 RPM	COATING	SEE BOM
GREASE TYPE	NLGI #2	DRAWN	SEC 01/03/2025
GREASE FILL	40%	CHECKED	SEC 01/09/2025
OPERATING TEMP	10°F - 200°F	APPROVED	
SEAL TYPE	B-TYPE		
INTERNAL CLEARANCE	C3		
TORQUE SETTING ON SET SCREWS			



DATE	BY	REVISION DESCRIPTION	REV

ITEM DESCRIPTION:		HCP212-36	SCALE
			1:6
			REV
			-

9 8 7 6 5 4 3 2 1

A B C D E F G