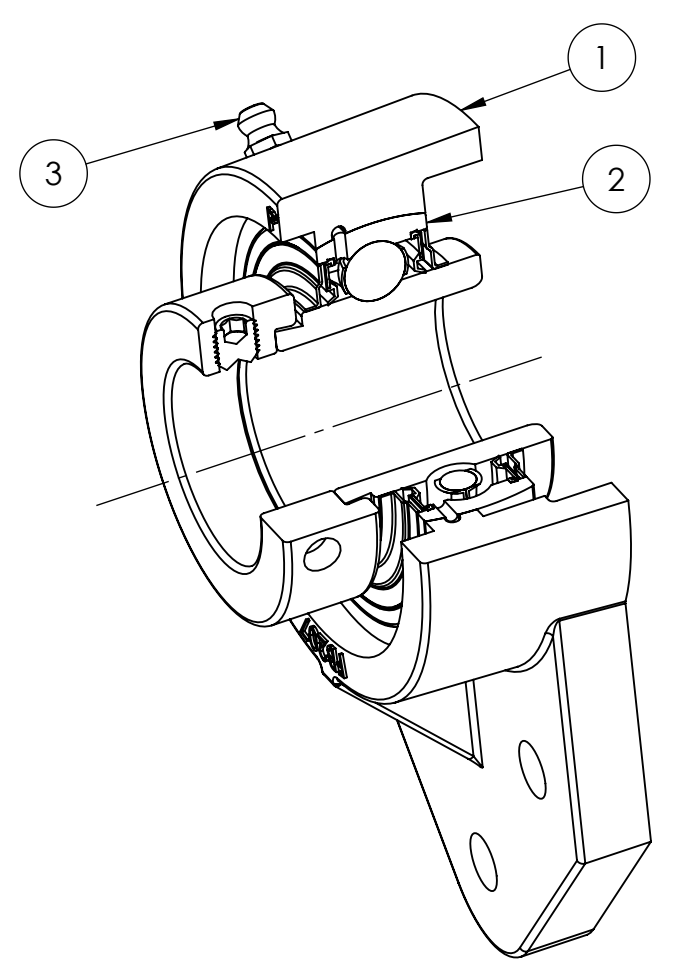
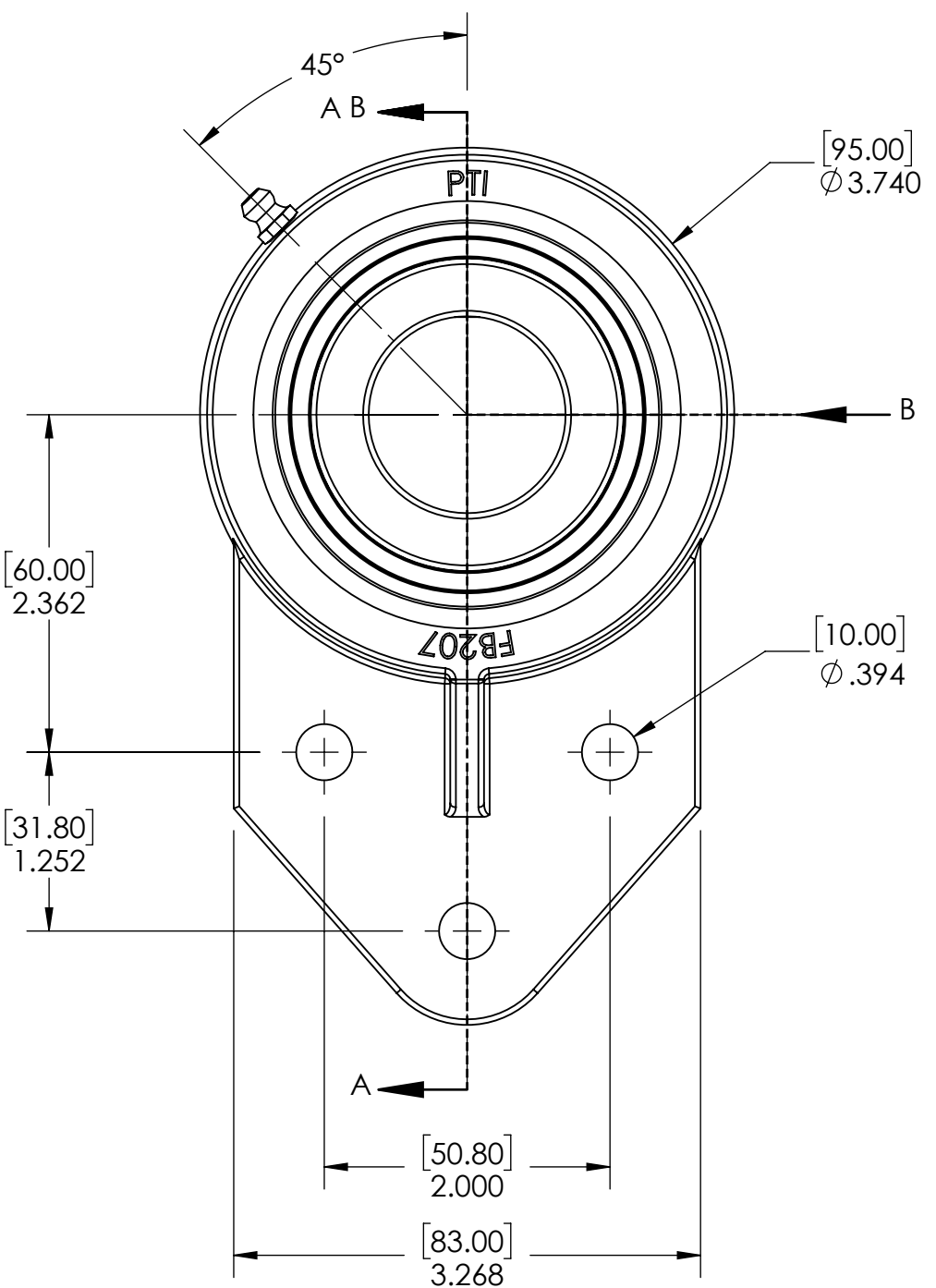
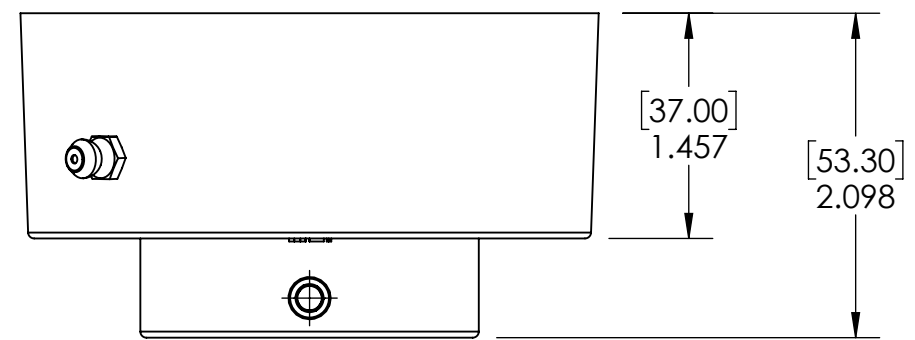


9 8 7 6 5 4 3 2 1

G F E D C B A



ITEM NO.	PART NUMBER	MATERIAL	COATING	QTY.
3	M6 ZERK	STEEL	ZINC PLATED	1
2	HC207-35MM	BEARING STEEL	N/A	1
1	FB207	CAST IRON	POWDER COAT	1

SPECIFICATIONS		WEIGHT	
UNITS:	IN (mm)		3.57 LBS
LOAD RATINGS	C: 5,780 LBS Co: 3,440 LBS	MATERIAL	SEE BOM
SPEED RATING	4500 RPM	COATING	SEE BOM
GREASE TYPE	NLGI #2	DRAWN	SEC 01/08/2025
GREASE FILL	40%	CHECKED	KODS 01/10/2025
OPERATING TEMP	10°F - 200°F	APPROVED	
SEAL TYPE	B-TYPE	THIRD ANGLE PROJECTION	
INTERNAL CLEARANCE	C3		
TORQUE SETTING ON SET SCREWS			



DATE	BY	REVISION DESCRIPTION	REV
ITEM DESCRIPTION: FB207-35AMM			SCALE 1:9
			REV -

9 8 7 6 5 4 3 2 1

A B C D E F G