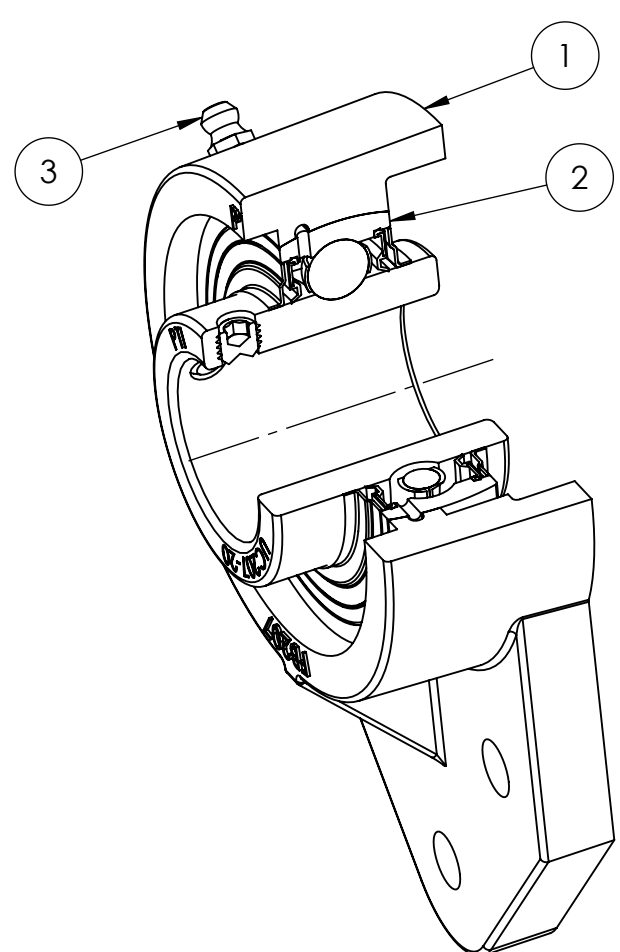
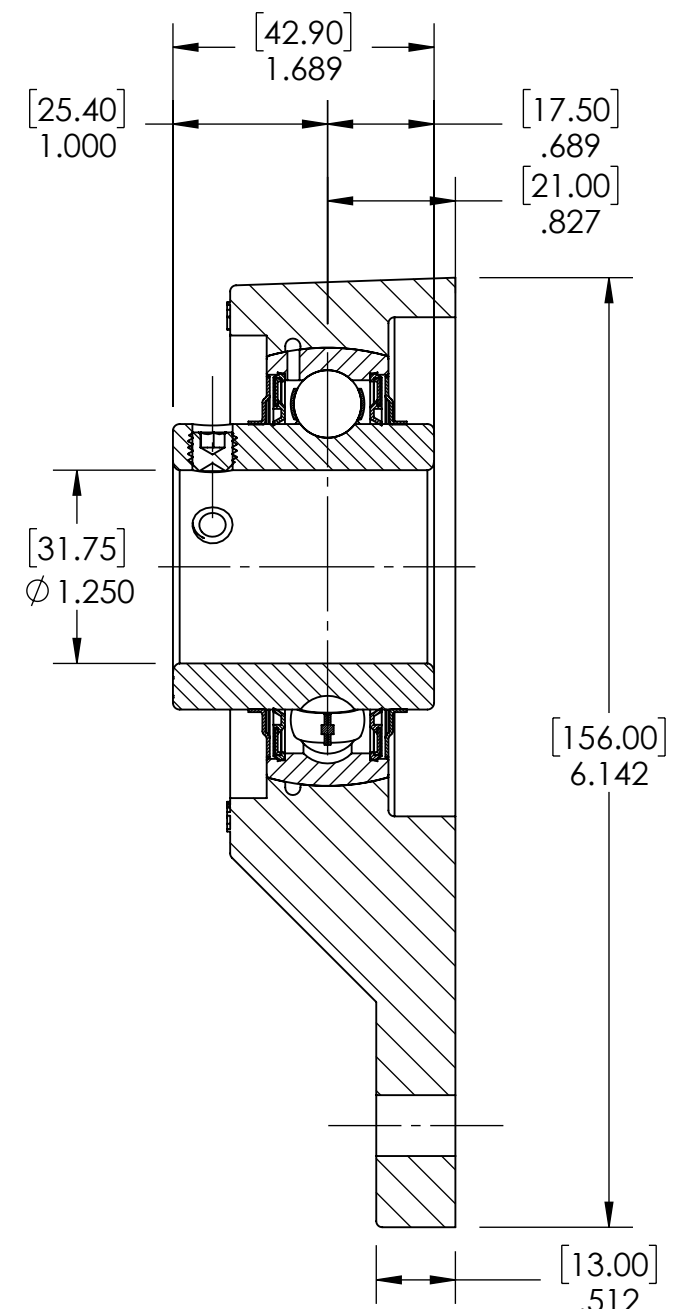
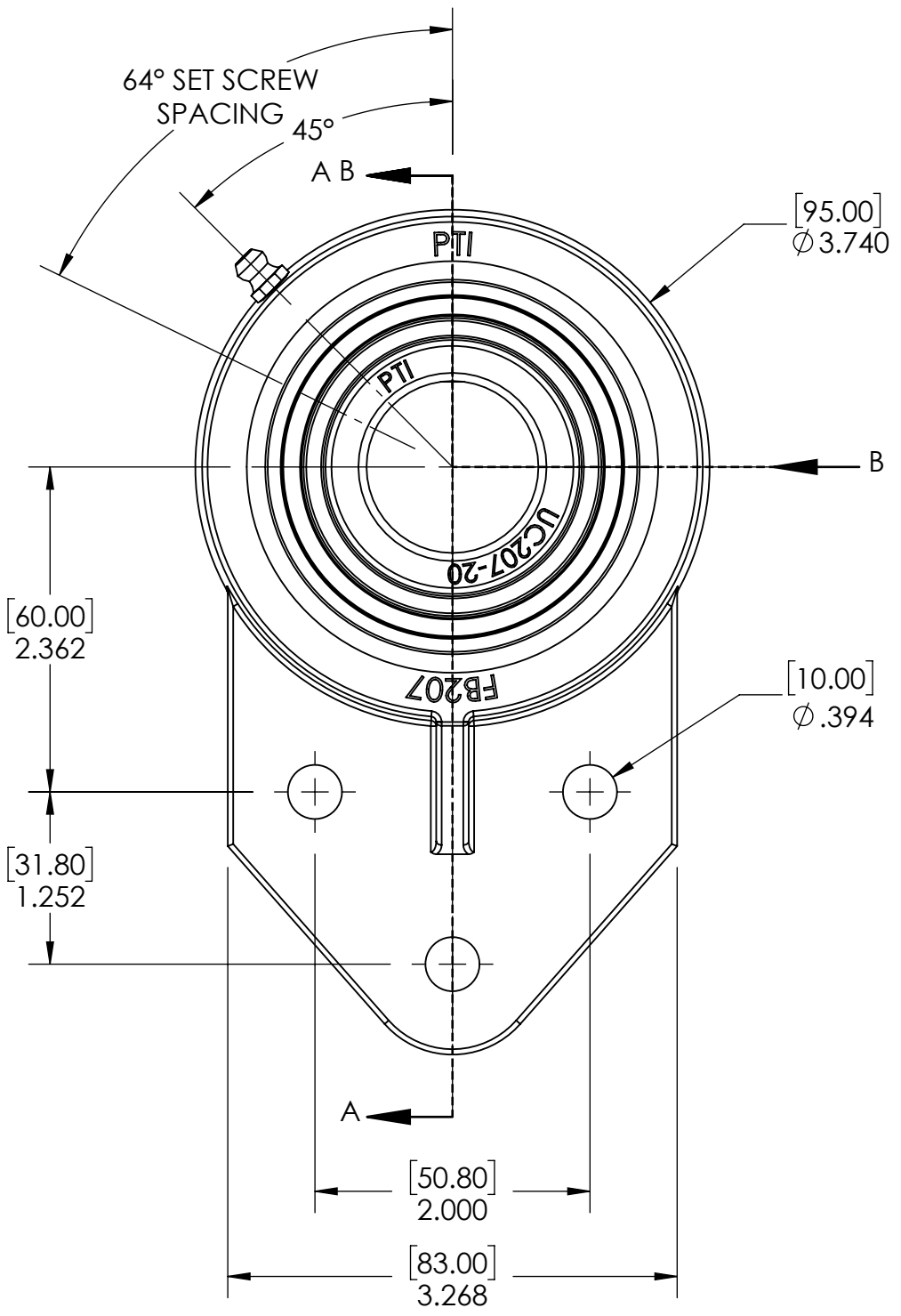
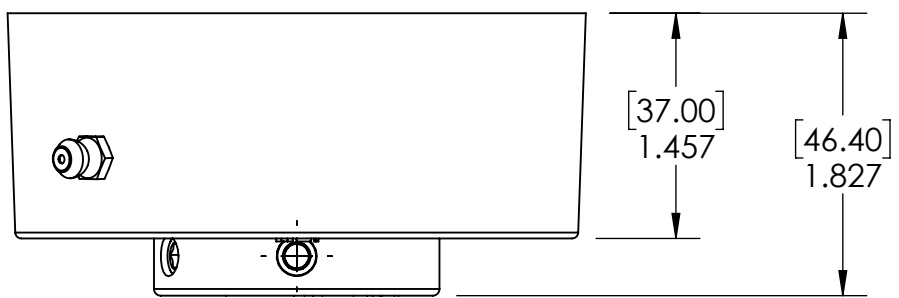


9 8 7 6 5 4 3 2 1

G F E D C B A



SECTION VIEW A-A

SPECIFICATIONS	
UNITS:	IN (mm)
LOAD RATINGS	C: 5,780 LBS Co: 3,440 LBS
SPEED RATING	4500 RPM
GREASE TYPE	NLGI #2
GREASE FILL	40%
OPERATING TEMP	10°F - 200°F
SEAL TYPE	B-TYPE
INTERNAL CLEARANCE	C3
TORQUE SETTING ON SET SCREWS	



WEIGHT	3.39 LBS
MATERIAL	SEE BOM
COATING	SEE BOM
DRAWN	SEC 01/08/2025
CHECKED	KODS 01/10/2025
APPROVED	
THIRD ANGLE PROJECTION	
PROPRIETARY AND CONFIDENTIAL	
THE INFORMATION CONTAINED IN THIS DRAWING IS THE SOLE PROPERTY OF SOLVE IMG. ANY REPRODUCTION IN PART OR AS A WHOLE WITHOUT THE WRITTEN PERMISSION OF SOLVE IMG IS PROHIBITED.	

ITEM NO.	PART NUMBER	MATERIAL	COATING	QTY.
3	M6 ZERK	STEEL	ZINC PLATED	1
2	UC207-20	BEARING STEEL	N/A	1
1	FB207	CAST IRON	POWDER COAT	1

DATE	BY	REVISION DESCRIPTION	REV
ITEM DESCRIPTION:			SCALE
FB207-20U			1:9
			-

9 8 7 6 5 4 3 2 1

A B C D E F G