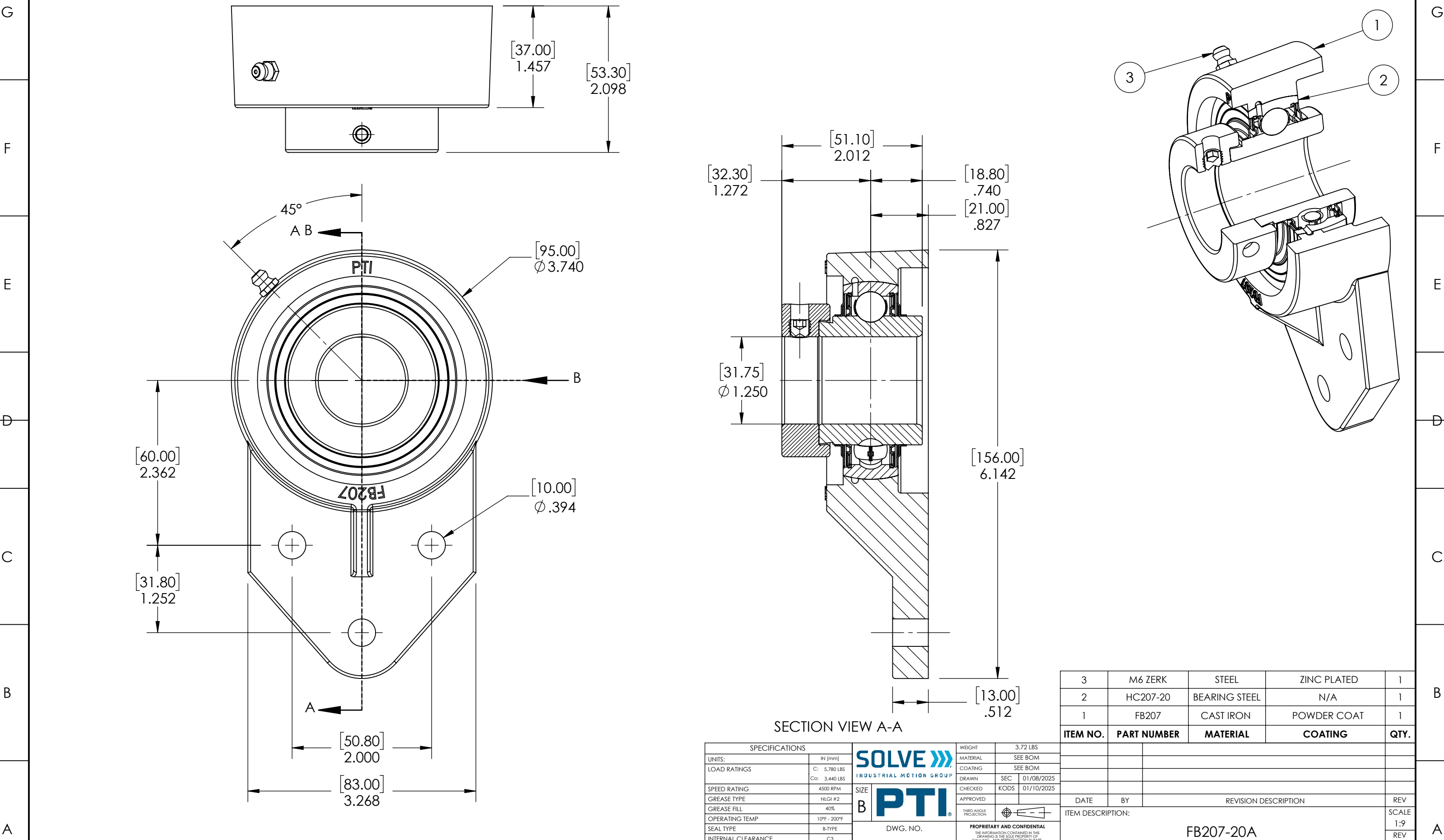


9 8 7 6 5 4 3 2 1



9 8 7 6 5 4 3 2 1

SECTION VIEW A-A

| SPECIFICATIONS | | WEIGHT | |
|------------------------------|-------------------------------|------------------------|-----------------|
| UNITS: | IN (mm) | | 3.72 LBS |
| LOAD RATINGS | C: 5,780 LBS Co: 3,440 LBS | MATERIAL | SEE BOM |
| SPEED RATING | 4500 RPM | COATING | SEE BOM |
| GREASE TYPE | NLGI #2 | DRAWN | SEC 01/08/2025 |
| GREASE FILL | 40% | CHECKED | KODS 01/10/2025 |
| OPERATING TEMP | 10°F - 200°F | APPROVED | |
| SEAL TYPE | B-TYPE | THIRD ANGLE PROJECTION | |
| INTERNAL CLEARANCE | C3 | | |
| TORQUE SETTING ON SET SCREWS | | | |



| ITEM NO. | PART NUMBER | MATERIAL | COATING | QTY. |
|----------|-------------|---------------|-------------|------|
| 3 | M6 ZERK | STEEL | ZINC PLATED | 1 |
| 2 | HC207-20 | BEARING STEEL | N/A | 1 |
| 1 | FB207 | CAST IRON | POWDER COAT | 1 |

| DATE | BY | REVISION DESCRIPTION | REV |
|-------------------|----|----------------------|-------|
| | | | |
| ITEM DESCRIPTION: | | | SCALE |
| FB207-20A | | | 1:9 |
| | | | - |

PROPRIETARY AND CONFIDENTIAL
THE INFORMATION CONTAINED IN THIS DRAWING IS THE SOLE PROPERTY OF SOLVE IMG. ANY REPRODUCTION IN PART OR AS A WHOLE WITHOUT THE WRITTEN PERMISSION OF SOLVE IMG IS PROHIBITED.