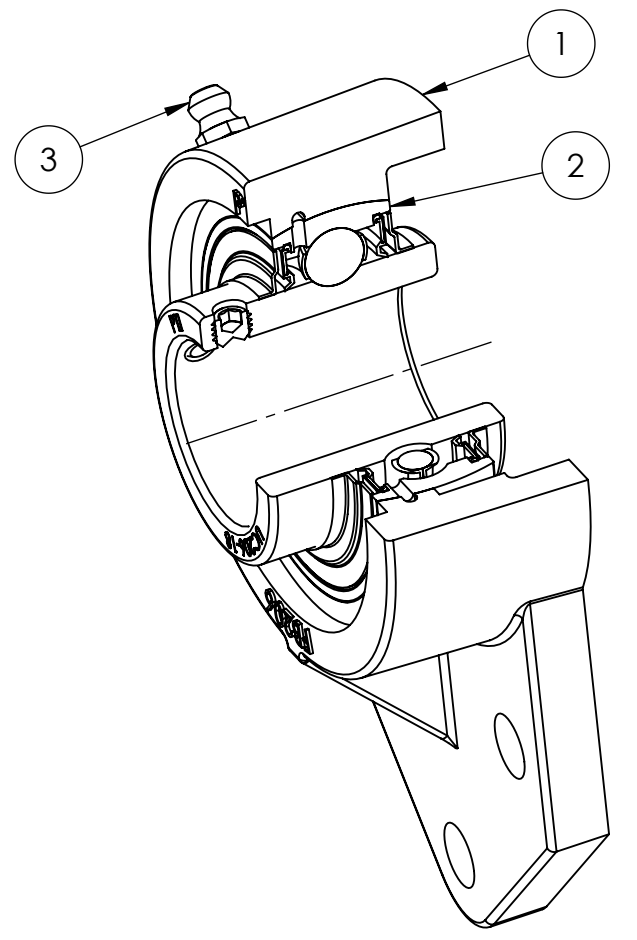
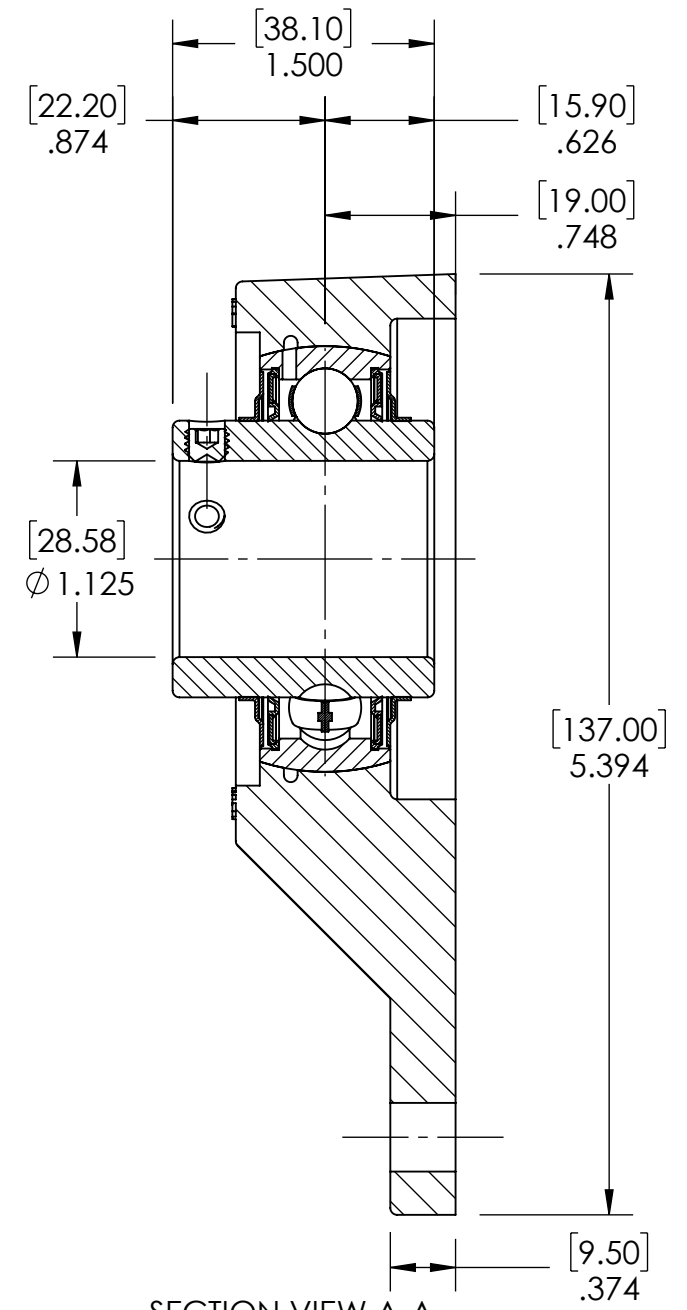
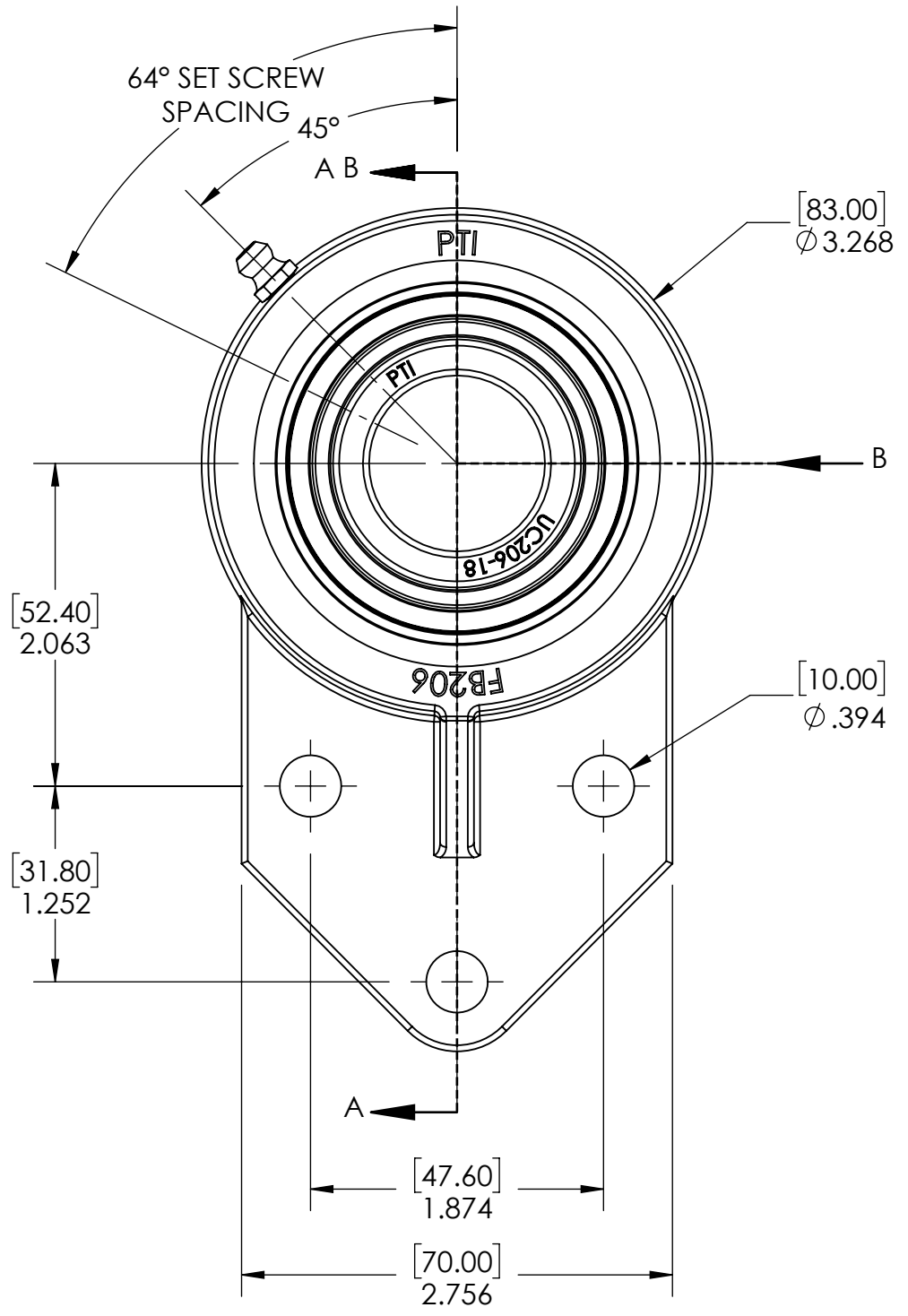
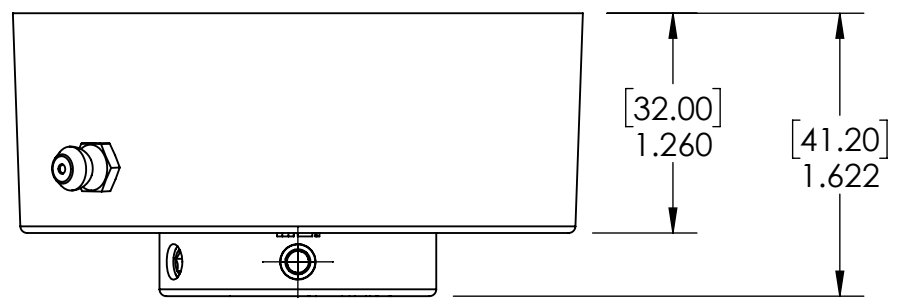


9 8 7 6 5 4 3 2 1

G F E D C B A



SECTION VIEW A-A

SPECIFICATIONS		WEIGHT	
UNITS:	IN (mm)		2.18 LBS
LOAD RATINGS	C: 4,300 LBS Co: 2,500 LBS	MATERIAL	SEE BOM
SPEED RATING	5300 RPM	COATING	SEE BOM
GREASE TYPE	NLGI #2	DRAWN	SEC 01/08/2025
GREASE FILL	40%	CHECKED	KODS 01/09/2025
OPERATING TEMP	10°F - 200°F	APPROVED	
SEAL TYPE	B-TYPE	THIRD ANGLE PROJECTION	
INTERNAL CLEARANCE	C3		
TORQUE SETTING ON SET SCREWS			



ITEM NO.	PART NUMBER	MATERIAL	COATING	QTY.
3	M6 ZERK	STEEL	ZINC PLATED	1
2	UC206-18	BEARING STEEL	N/A	1
1	FB206	CAST IRON	POWDER COAT	1

DATE	BY	REVISION DESCRIPTION	REV
ITEM DESCRIPTION:			SCALE
FB206-18U			1:10
			REV
			-

9 8 7 6 5 4 3 2 1

A B C D E F G