

ITEM NO.	PART NUMBER	MATERIAL	COATING	QTY.
3	M6 ZERK	STEEL	ZINC PLATED	1
2	UC205-15	BEARING STEEL	N/A	1
1	FB205	CAST IRON	POWDER COAT	1

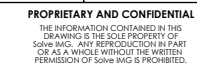
SPECIFICATIONS	
UNITS:	IN (mm)
LOAD RATINGS	C: 3,140 LBS Co: 1,750 LBS
SPEED RATING	6250 RPM
GREASE TYPE	NLGI #2
GREASE FILL	40%
OPERATING TEMP	10°F - 200°F
SEAL TYPE	B-TYPE
INTERNAL CLEARANCE	C3
TORQUE SETTING ON SET SCREWS	

**SOLVE** INDUSTRIAL MOTION GROUP  
**PTI**  
 DWG. NO.

WEIGHT	1.51 LBS
MATERIAL	SEE BOM
COATING	SEE BOM
DRAWN	SEC 01/08/2025
CHECKED	KODS 01/09/2025
APPROVED	

DATE	BY	REVISION DESCRIPTION	REV
ITEM DESCRIPTION:			SCALE
FB205-15U			1:12
			REV
			-

THIRD ANGLE PROJECTION



PROPRIETARY AND CONFIDENTIAL  
 THE INFORMATION CONTAINED IN THIS DRAWING IS THE SOLE PROPERTY OF SOLVE IMG. ANY REPRODUCTION IN PART OR AS A WHOLE WITHOUT THE WRITTEN PERMISSION OF SOLVE IMG IS PROHIBITED.