

9 8 7 6 5 4 3 2 1

G G

F F

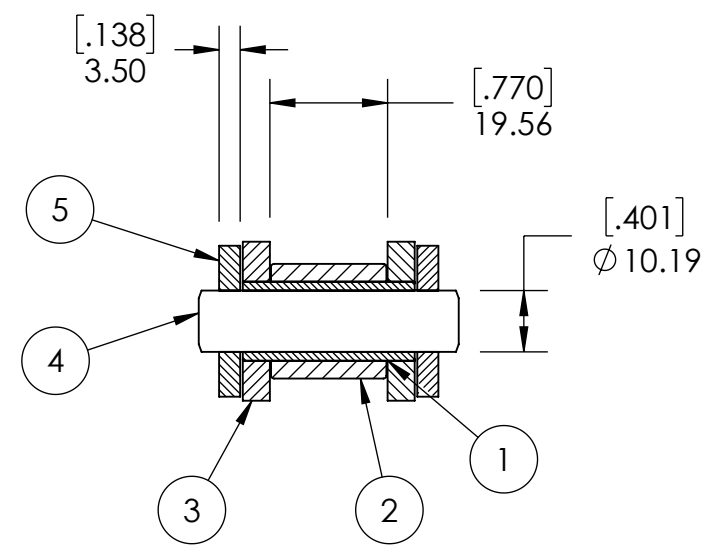
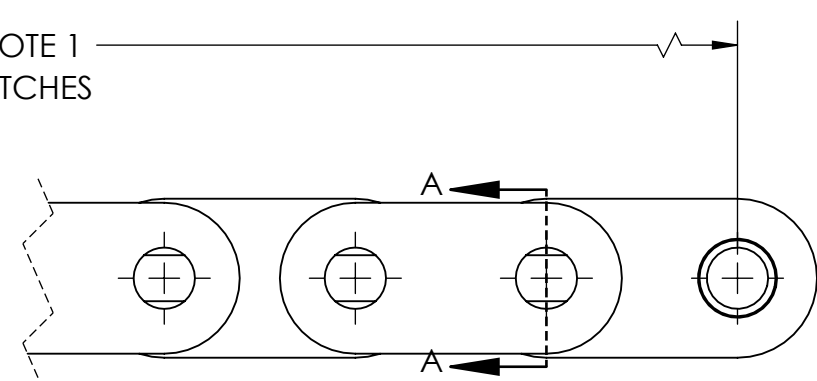
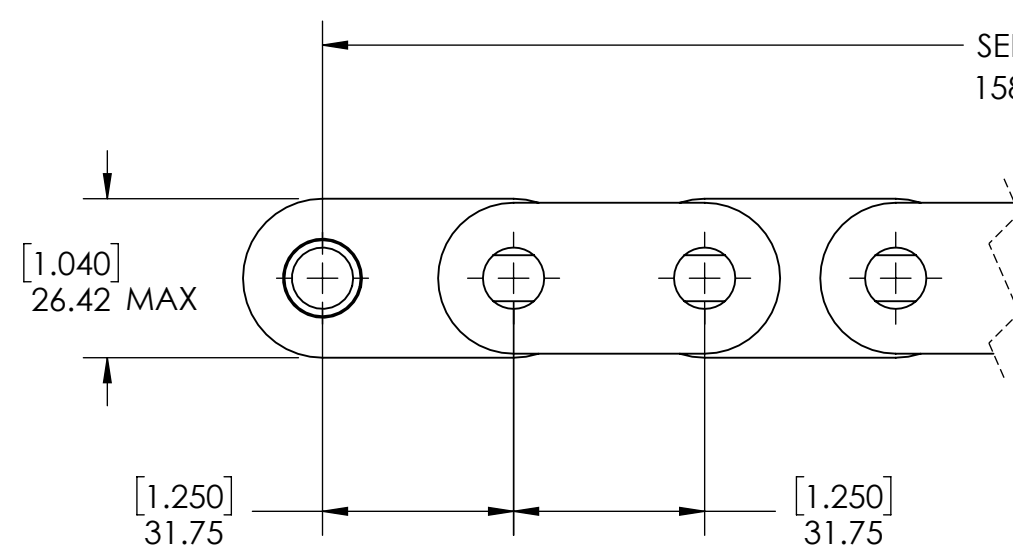
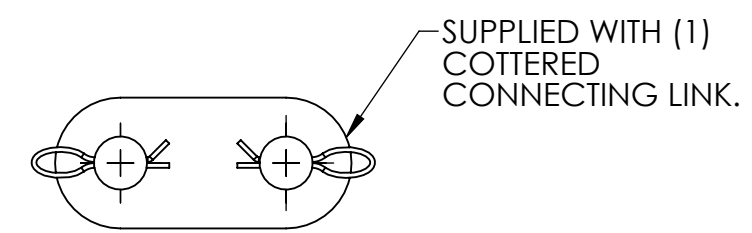
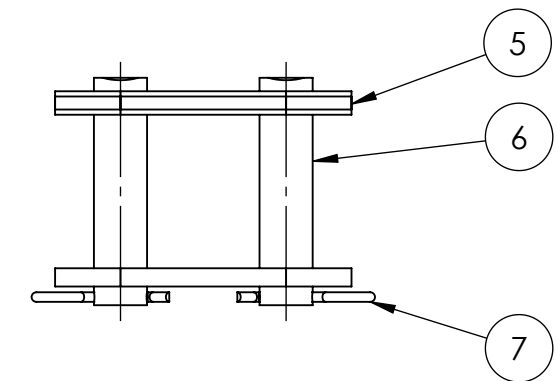
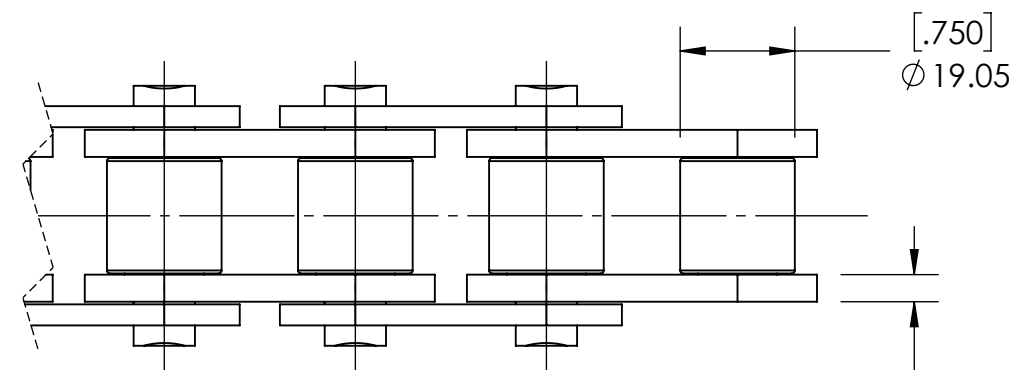
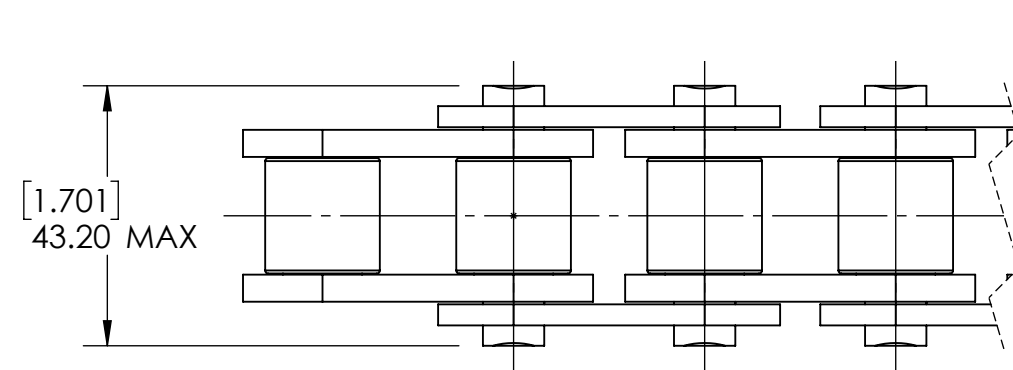
E E

D D

C C

B B

A A



SECTION A-A

NOTES:
1. SUPPLIED IN LENGTHS OF 5 METERS. ACTUAL LENGTH IS 5049 mm.

CHAINS SPECIFICATIONS	
UNITS	mm [INCH]
CHAIN NO.	20B
PITCH	1.25 IN
ROLLER DIAMETER	19.05 mm
INNER WIDTH	19.56 mm
AVERAGE ULTIMATE TENSILE STRENGTH	21356.85 LBS
CONNECTING LINK TYPE	COTTERED
PIN CONSTRUCTION	SOLID
PIN RETENTION	RIVETED
INDUSTRY STANDARD	ISO 606

SOLVE INDUSTRIAL MOTION GROUP
PTI

WEIGHT	46.31 LBS
MATERIAL	SEE BOM
COATING	ANTI-RUST OIL
DRAWN	SEC 06/24/2025
CHECKED	PT 07/01/2025
APPROVED	

ITEM NO.	PART NUMBER	MATERIAL	COATING
7	E20B COTTER PIN	STEEL	N/A
6	E20B-1GL CONNECTING LINK PIN	STEEL	N/A
5	E20BGL OUTER PLATE	STEEL	N/A
4	E20B-1GLRIV PIN	STEEL	N/A
3	E20BGL INNER PLATE	STEEL	N/A
2	E20BGL ROLLER	STEEL	N/A
1	E20BGL BUSHING	STEEL	N/A

DATE	BY	REVISION DESCRIPTION	REV

ITEM DESCRIPTION: E20B-1GLRIV

SCALE: 1:1

9 8 7 6 5 4 3 2 1