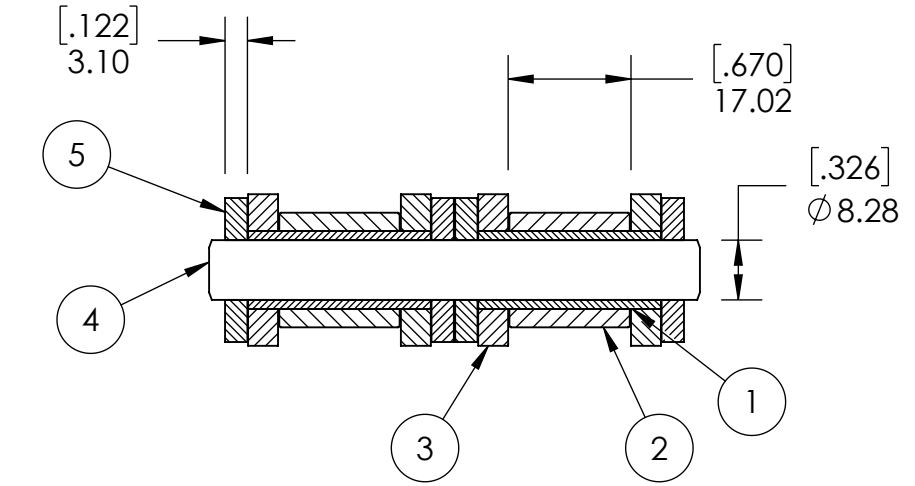
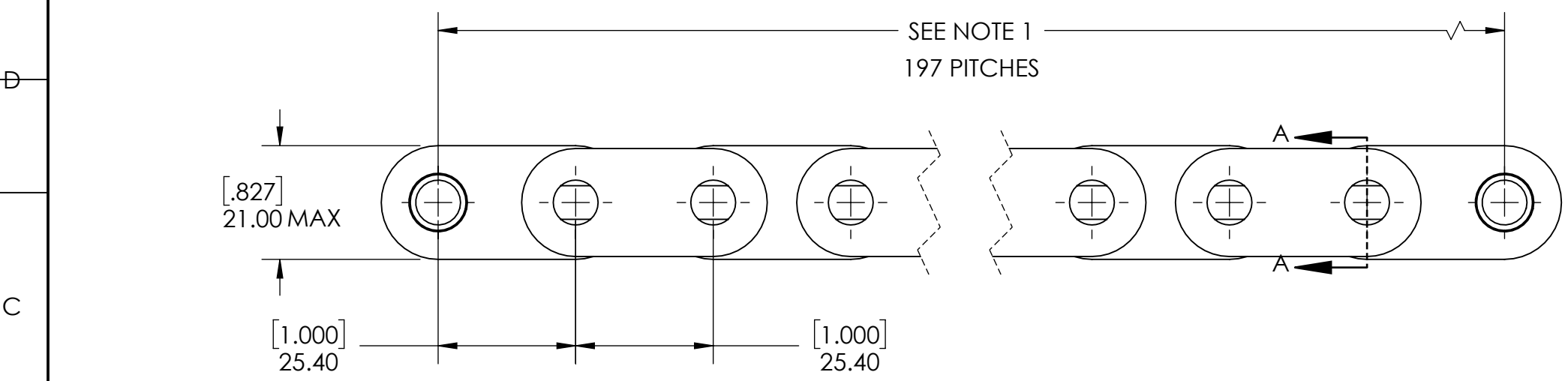
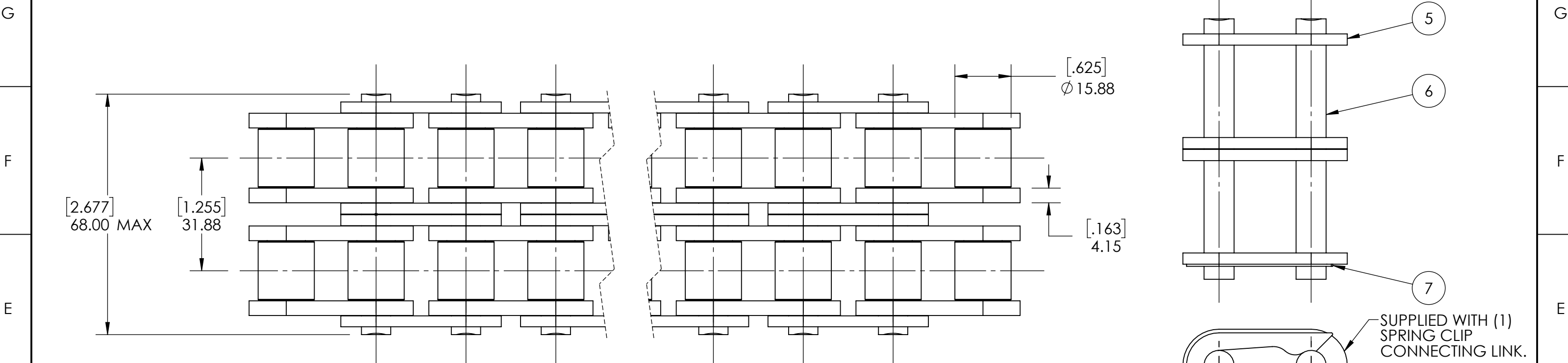


9 8 7 6 5 4 3 2 1



SUPPLIED WITH (1) SPRING CLIP CONNECTING LINK.

SECTION A-A

ITEM NO.	PART NUMBER	MATERIAL	COATING
7	E16B SPRING CLIP	STEEL	N/A
6	E16B-2GL CONNECTING LINK PIN	STEEL	N/A
5	E16BGL OUTER PLATE	STEEL	N/A
4	E16B-2GLRIV PIN	STEEL	N/A
3	E16BGL INNER PLATE	STEEL	N/A
2	E16BGL ROLLER	STEEL	N/A
1	E16BGL BUSHING	STEEL	N/A

CHAINS SPECIFICATIONS	
UNITS	mm (INCH)
CHAIN NO.	16B
PITCH	1 IN
ROLLER DIAMETER	15.88 mm
INNER WIDTH	17.02 mm
AVERAGE ULTIMATE TENSILE STRENGTH	23829.75 LBS
CONNECTING LINK TYPE	SPRING CLIP
PIN CONSTRUCTION	SOLID
PIN RETENTION	RIVETED
INDUSTRY STANDARD	ISO 606

SOLVE
INDUSTRIAL MOTION GROUP

SIZE **PTI**

DWG. NO.

WEIGHT	76.74 LBS
MATERIAL	SEE BOM
COATING	ANTI-RUST OIL
DRAWN	SEC 06/24/2025
CHECKED	PT 07/01/2025
APPROVED	

DATE	BY	REVISION DESCRIPTION	REV
ITEM DESCRIPTION:			SCALE
E16B-2GLRIV			1:1
			REV
			-

NOTES:
1. SUPPLIED IN LENGTHS OF 5 METERS. ACTUAL LENGTH IS 5030 mm.

9 8 7 6 5 4 3 2 1