

9 8 7 6 5 4 3 2 1

G G

F F

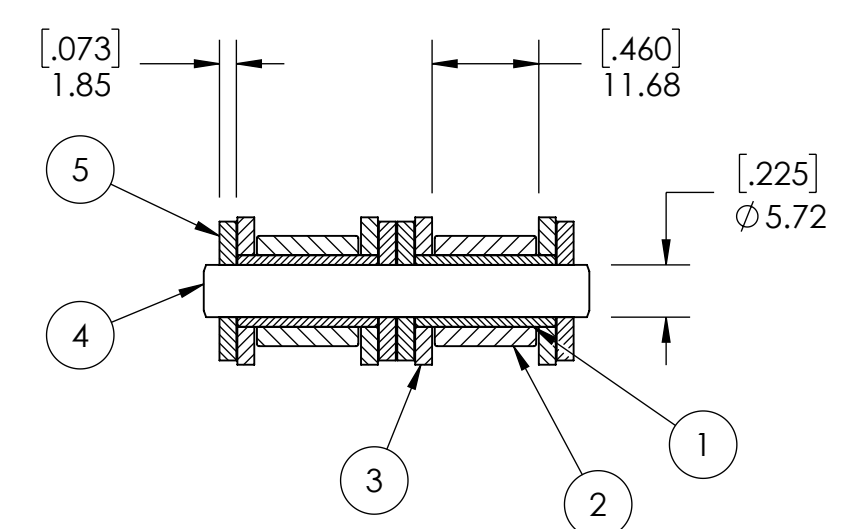
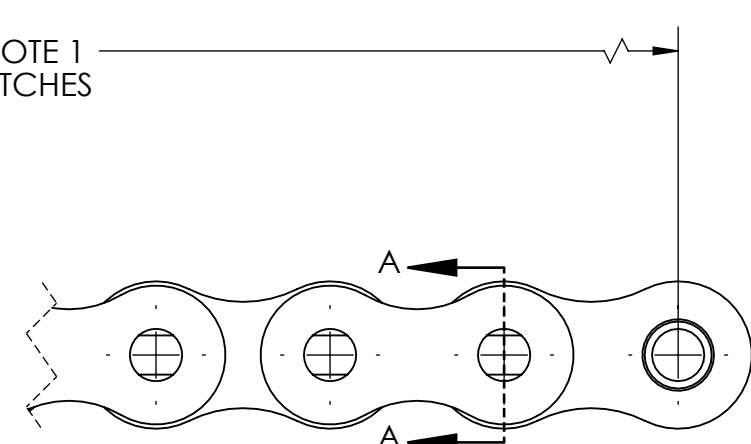
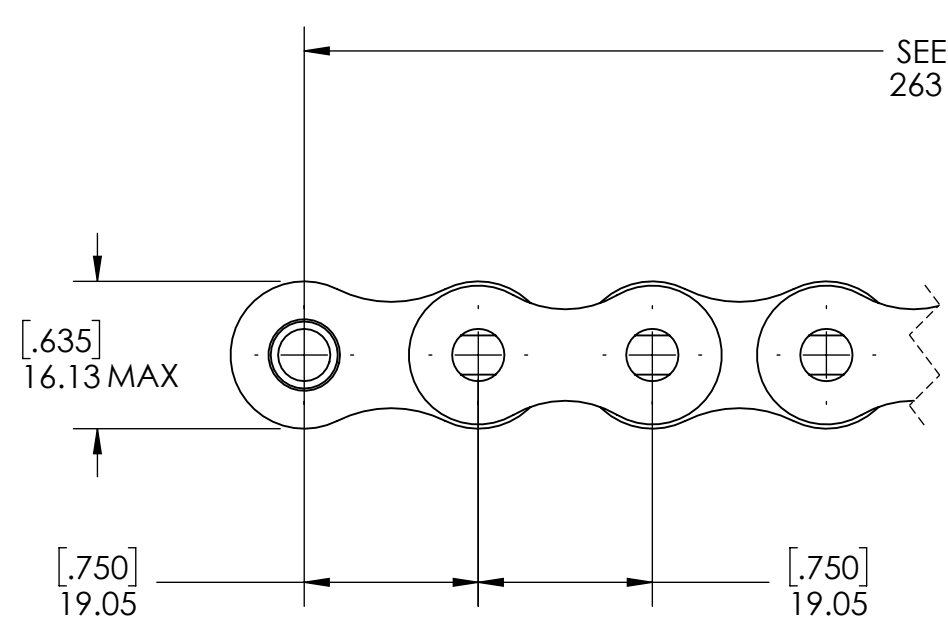
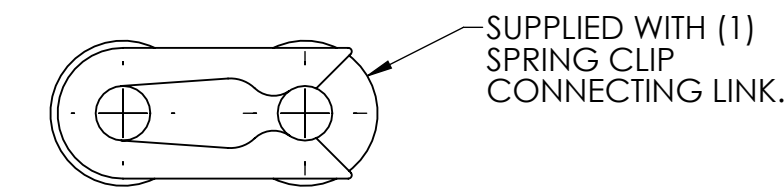
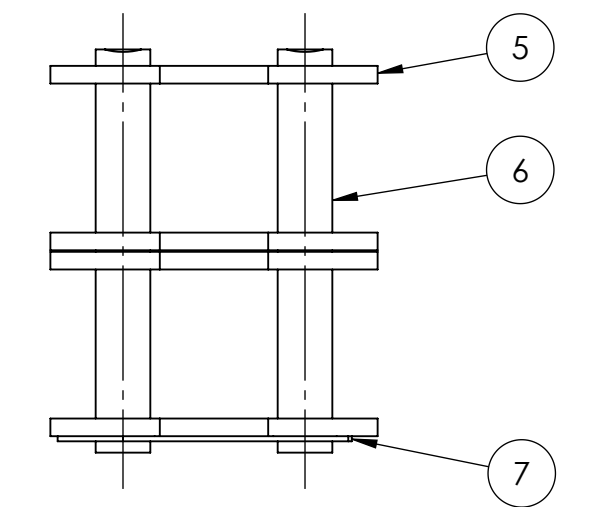
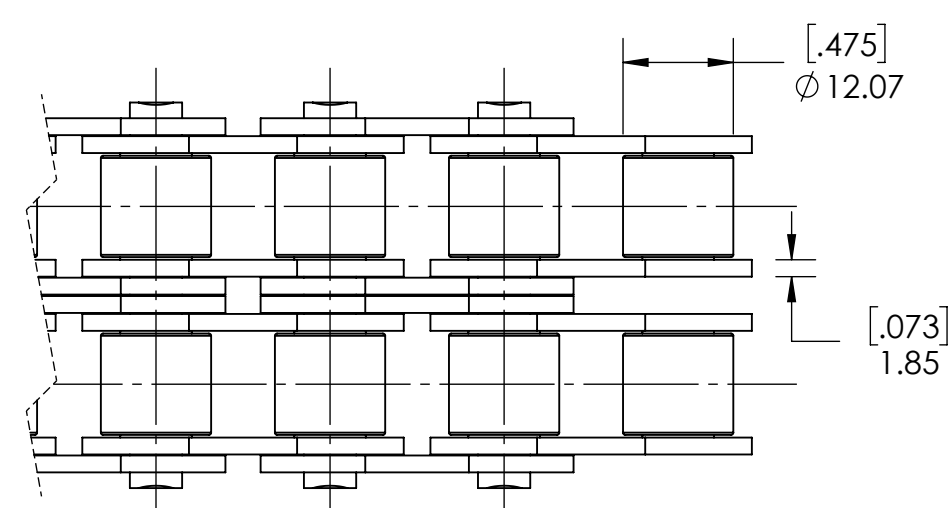
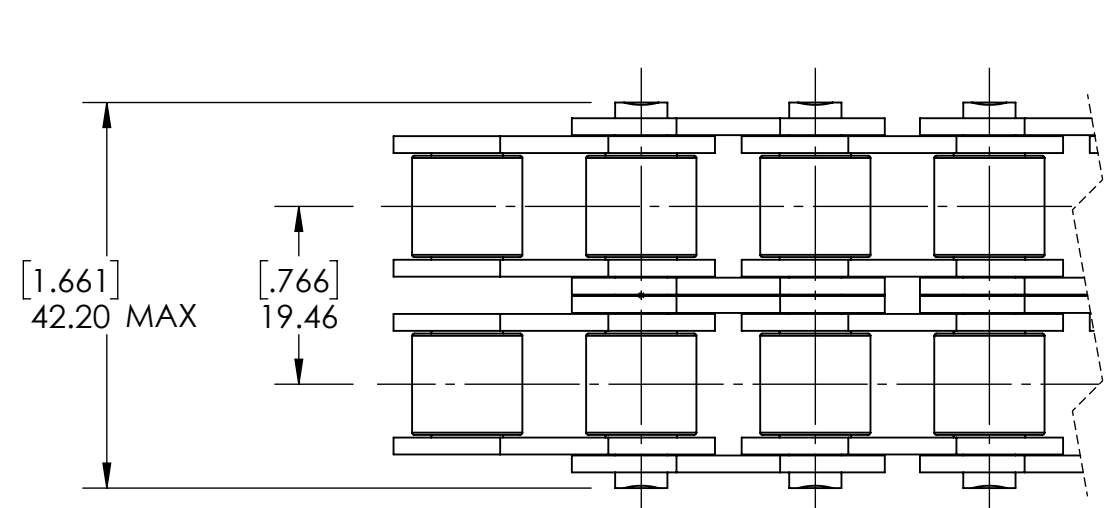
E E

D D

C C

B B

A A



SECTION A-A

NOTES:
1. SUPPLIED IN LENGTHS OF 5 METERS. ACTUAL LENGTH IS 5030 mm.

| CHAINS SPECIFICATIONS | | WEIGHT | |
|-----------------------------------|-------------|------------------------|----------------|
| UNITS | mm (INCH) | | 27.28 LBS |
| CHAIN NO. | 12B | MATERIAL | SEE BOM |
| PITCH | 0.75 IN | COATING | ANTI-RUST OIL |
| ROLLER DIAMETER | 12.07 mm | DRAWN | SEC 07/14/2025 |
| INNER WIDTH | 11.68 mm | CHECKED | PT 07/15/2025 |
| AVERAGE ULTIMATE TENSILE STRENGTH | 8317.93 LBS | APPROVED | |
| CONNECTING LINK TYPE | SPRING CLIP | THIRD ANGLE PROJECTION | |
| PIN CONSTRUCTION | SOLID | | |
| PIN RETENTION | RIVETED | | |
| INDUSTRY STANDARD | ISO 606 | | |



PROPRIETARY AND CONFIDENTIAL
THE INFORMATION CONTAINED IN THIS DRAWING IS THE SOLE PROPERTY OF SOLVE IMG. ANY REPRODUCTION IN PART OR AS A WHOLE WITHOUT THE WRITTEN PERMISSION OF SOLVE IMG IS PROHIBITED.

| ITEM NO. | PART NUMBER | MATERIAL | COATING |
|----------|------------------------------|-----------------|---------|
| 7 | E12BSS SPRING CLIP | STAINLESS STEEL | N/A |
| 6 | E12B-2SS CONNECTING LINK PIN | STAINLESS STEEL | N/A |
| 5 | E12BSS OUTER PLATE | STAINLESS STEEL | N/A |
| 4 | E12B-2SSRIV PIN | STAINLESS STEEL | N/A |
| 3 | E12BSS INNER PLATE | STAINLESS STEEL | N/A |
| 2 | E12BSS ROLLER | STAINLESS STEEL | N/A |
| 1 | E12BSS BUSHING | STAINLESS STEEL | N/A |

| DATE | BY | REVISION DESCRIPTION | REV |
|-------------------------------|----|----------------------|-----------|
| | | | |
| ITEM DESCRIPTION: E12B-2SSRIV | | | SCALE 1:1 |
| | | | REV - |

9 8 7 6 5 4 3 2 1