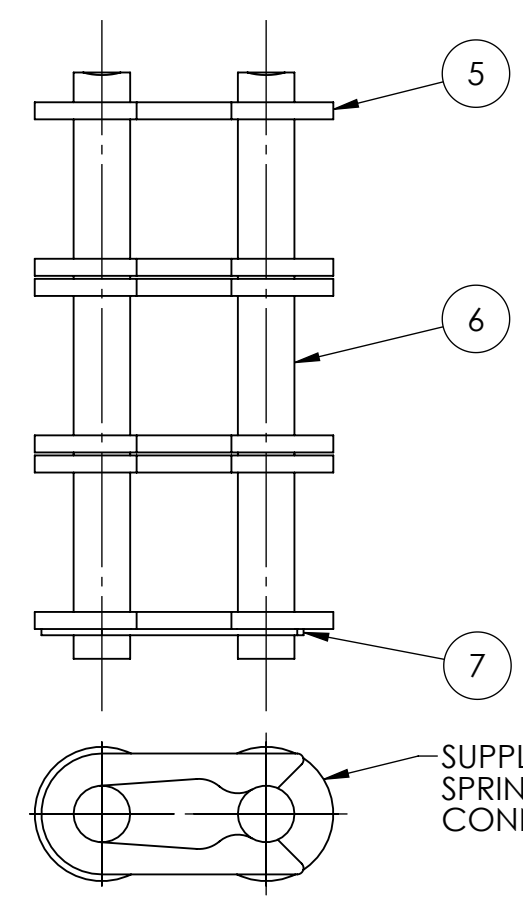
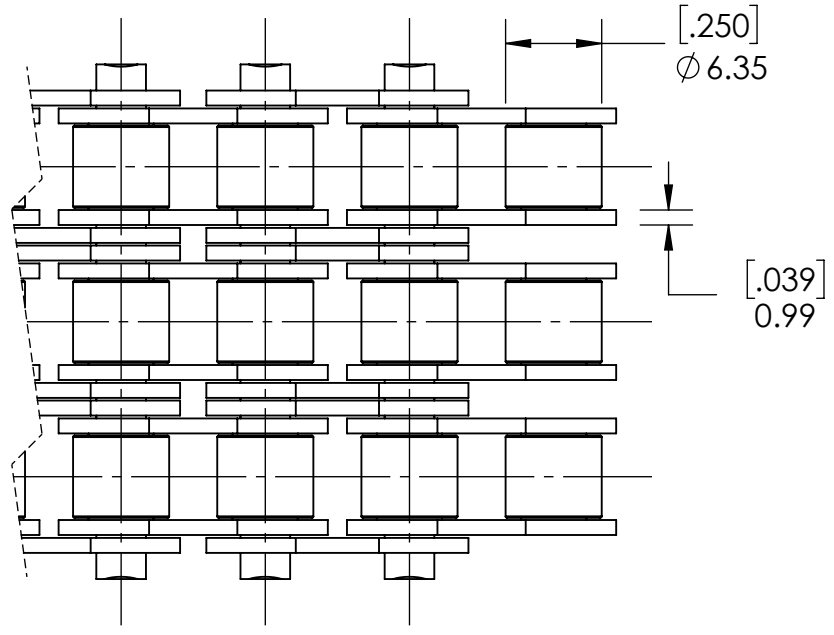
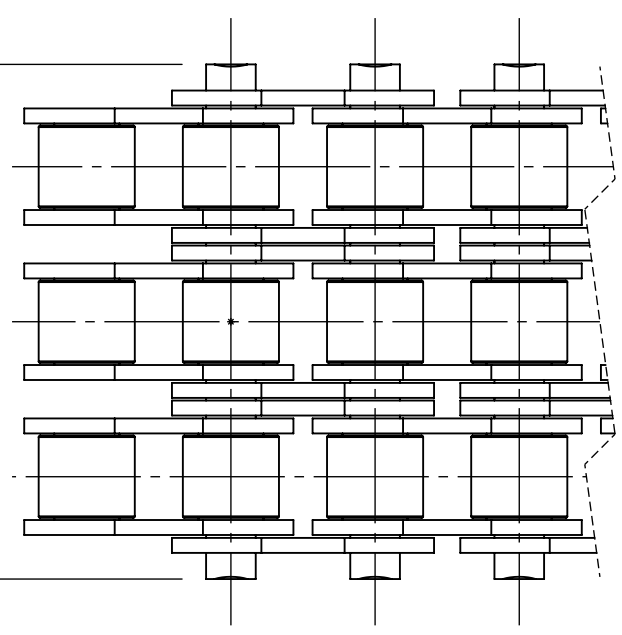


9 8 7 6 5 4 3 2 1

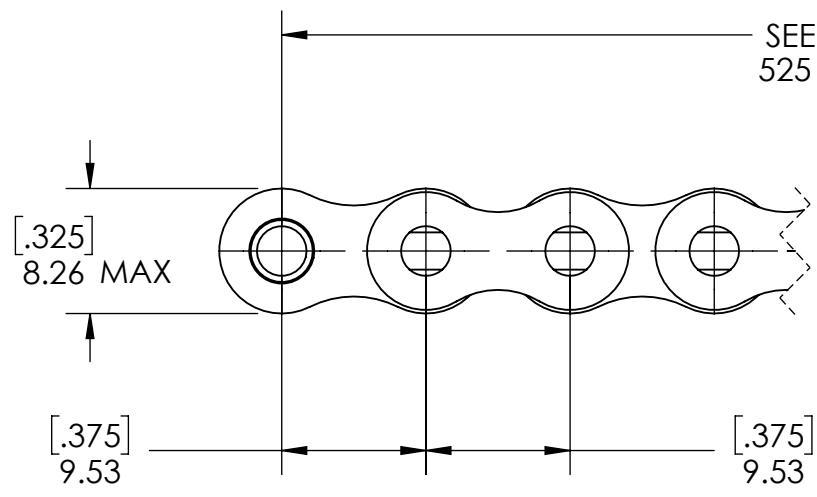
G F E D C B A

[1.339]
34.00 MAX

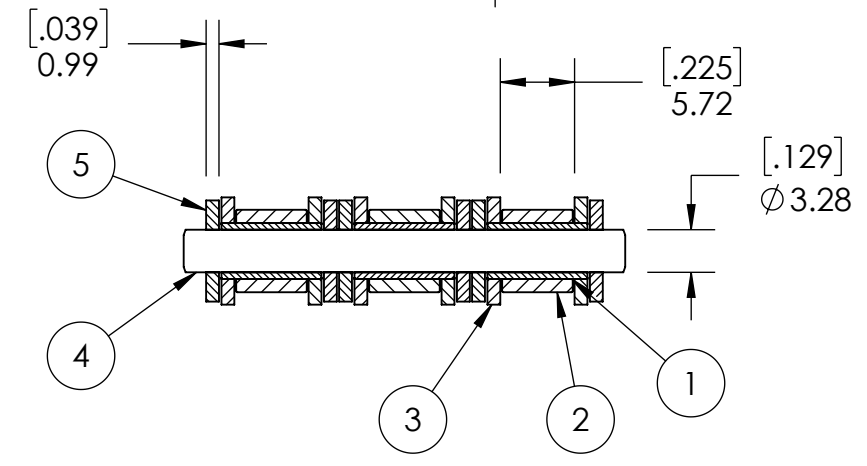
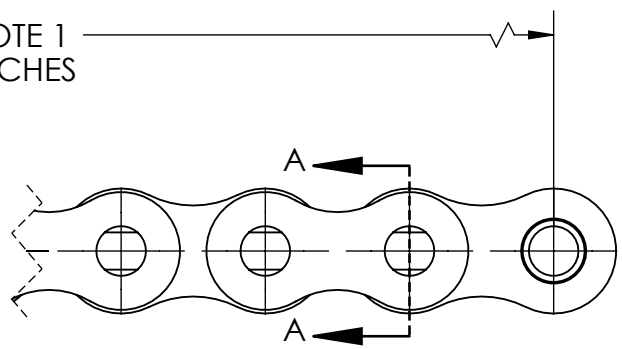
[.403]
10.24
[.403]
10.24



SUPPLIED WITH (1)
SPRING CLIP
CONNECTING LINK.



SEE NOTE 1
525 PITCHES



SECTION A-A

7	E06B SPRING CLIP	STEEL	N/A
6	E06B-3 CONNECTING LINK PIN	STEEL	N/A
5	E06B OUTER PLATE	STEEL	N/A
4	E06B-3RIV PIN	STEEL	N/A
3	E06B INNER PLATE	STEEL	N/A
2	E06B ROLLER	STEEL	N/A
1	E06B BUSHING	STEEL	N/A
ITEM NO.	PART NUMBER	MATERIAL	COATING

CHAINS SPECIFICATIONS	
UNITS	mm (INCH)
CHAIN NO.	06B
PITCH	0.375 IN
ROLLER DIAMETER	6.35 mm
INNER WIDTH	5.72 mm
AVERAGE ULTIMATE TENSILE STRENGTH	6766.75 LBS
CONNECTING LINK TYPE	SPRING CLIP
PIN CONSTRUCTION	SOLID
PIN RETENTION	RIVETED
INDUSTRY STANDARD	ISO 606



WEIGHT	12.82 LBS
MATERIAL	SEE BOM
COATING	ANTI-RUST OIL
DRAWN	SEC 07/11/2025
CHECKED	EG 07/11/2025
APPROVED	
THIRD ANGLE PROJECTION	
DWG. NO.	E06B-3RIV
PROPRIETARY AND CONFIDENTIAL THE INFORMATION CONTAINED IN THIS DRAWING IS THE SOLE PROPERTY OF SOLVE IMG. ANY REPRODUCTION IN PART OR AS A WHOLE WITHOUT THE WRITTEN PERMISSION OF SOLVE IMG IS PROHIBITED.	

DATE	BY	REVISION DESCRIPTION	REV
ITEM DESCRIPTION:			SCALE
E06B-3RIV			1:1
			REV
			-

NOTES:
1. SUPPLIED IN LENGTHS OF 5 METERS. ACTUAL LENGTH IS 5011 mm.

9 8 7 6 5 4 3 2 1

A B C D E F G